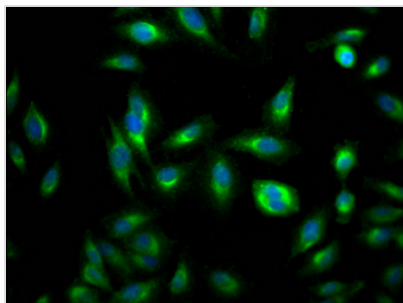




RHEB Recombinant Monoclonal Antibody

Product Code	CSB-RA170650A0HU
Storage	Upon receipt, store at -20°C or -80°C. Avoid repeated freeze.
Uniprot No.	Q15382
Immunogen	A synthesized peptide derived from human RHEB
Species Reactivity	Human
Tested Applications	ELISA, IF; Recommended dilution: IF:1:20-1:200
Relevance	Activates the protein kinase activity of mTORC1, and thereby plays a role in the regulation of apoptosis. Stimulates the phosphorylation of S6K1 and EIF4EBP1 through activation of mTORC1 signaling. Has low intrinsic GTPase activity.
Form	Liquid
Conjugate	Non-conjugated
Storage Buffer	Rabbit IgG in 10mM phosphate buffered saline , pH 7.4, 150mM sodium chloride, 0.05% BSA, 0.02% sodium azide and 50% glycerol.
Purification Method	Affinity-chromatography
Isotype	Rabbit IgG
Clonality	Monoclonal
Product Type	Recombinant Antibody
Immunogen Species	Homo sapiens (Human)
Research Area	Cancer; Metabolism; Signal transduction
Target Names	RHEB
Clone No.	7G7

Image



Immunofluorescence staining of HeLa Cells with CSB-RA170650A0HU at 1:50, counter-stained with DAPI. The cells were fixed in 4% formaldehyde, permeated by 0.2% TritonX-100, and blocked in 10% normal Goat Serum. The cells were then incubated with the antibody overnight at 4?. Nuclear DNA was labeled in blue with DAPI. The secondary antibody was FITC-conjugated AffiniPure Goat Anti-Rabbit IgG (H+L).

Usage For Research Use Only. Not for use in diagnostic or therapeutic procedures.