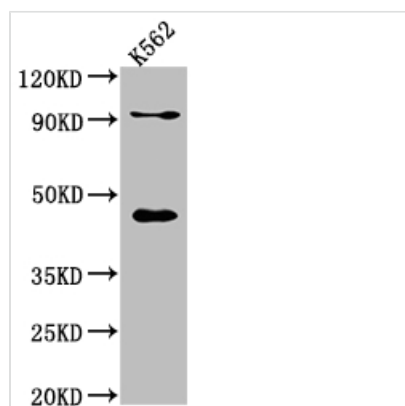




PCYT1A Recombinant Monoclonal Antibody

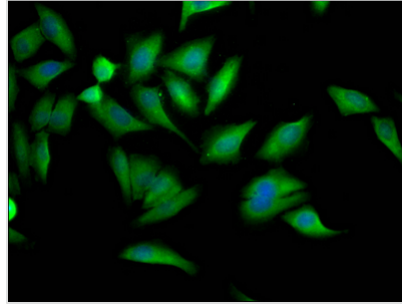
Product Code	CSB-RA213218A0HU
Storage	Upon receipt, store at -20°C or -80°C. Avoid repeated freeze.
Uniprot No.	P49585
Immunogen	A synthesized peptide derived from human PCYT1A
Species Reactivity	Human
Tested Applications	ELISA, WB, IF; Recommended dilution: WB:1:500-1:5000, IF:1:20-1:200
Relevance	Controls phosphatidylcholine synthesis.
Form	Liquid
Conjugate	Non-conjugated
Storage Buffer	Rabbit IgG in 10mM phosphate buffered saline , pH 7.4, 150mM sodium chloride, 0.05% BSA, 0.02% sodium azide and 50% glycerol.
Purification Method	Affinity-chromatography
Isotype	Rabbit IgG
Clonality	Monoclonal
Product Type	Recombinant Antibody
Immunogen Species	Homo sapiens (Human)
Research Area	Neuroscience; Cancer; Metabolism; Signal transduction
Target Names	PCYT1A
Clone No.	4F2

Image



Western Blot

Positive WB detected in: K562 whole cell lysate
 All lanes: PCYT1A antibody at 1:1000
 Secondary
 Goat polyclonal to rabbit IgG at 1/50000 dilution
 Predicted band size: 42 kDa
 Observed band size: 42 kDa



Immunofluorescence staining of HeLa Cells with CSB-RA213218A0HU at 1:50, counter-stained with DAPI. The cells were fixed in 4% formaldehyde, permeated by 0.2% TritonX-100, and blocked in 10% normal Goat Serum. The cells were then incubated with the antibody overnight at 4?. Nuclear DNA was labeled in blue with DAPI. The secondary antibody was FITC-conjugated AffiniPure Goat Anti-Rabbit IgG (H+L).

Usage

For Research Use Only. Not for use in diagnostic or therapeutic procedures.