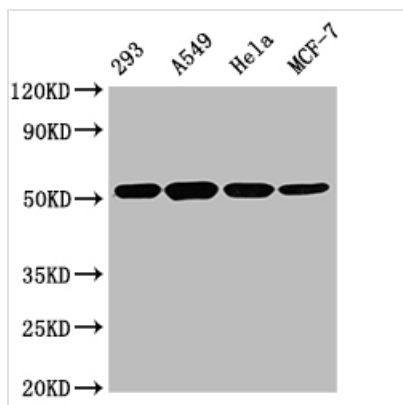




# TUBB Monoclonal Antibody

<b>Product Code</b>	CSB-MA025318A0m
<b>Storage</b>	Upon receipt, store at -20°C or -80°C. Avoid repeated freeze.
<b>Uniprot No.</b>	P04350/Q13509/Q13885/P07437/P68371/Q9D6F9/Q9BVA1
<b>Immunogen</b>	GAGNNWAKGHYTEGA synthetic peptide conjugate to KLH
<b>Raised In</b>	Mouse
<b>Species Reactivity</b>	Human, Rat, Rabbit, Mouse
<b>Tested Applications</b>	ELISA, WB, IHC, IF, FC, IP; Recommended dilution: WB:1:5000-1:640000, IHC: 1:100-1:300, IF:1:50-1:200, FC:1:100-1:300, IP:1µl-2µl
<b>Form</b>	Liquid
<b>Conjugate</b>	Non-conjugated
<b>Storage Buffer</b>	Preservative: 0.03% Proclin 300 Constituents: 50% Glycerol, 0.01M PBS, PH 7.4
<b>Purification Method</b>	>95%, Protein A purified
<b>Isotype</b>	IgG2b
<b>Clonality</b>	Monoclonal Antibody
<b>Clone No.</b>	16E11D4

## Image



### Western Blot

Positive WB detected in: 293 whole cell lysate, A549 whole cell lysate, HeLa whole cell lysate, MCF-7 whole cell lysate

All lanes TUBB antibody at 1:5000

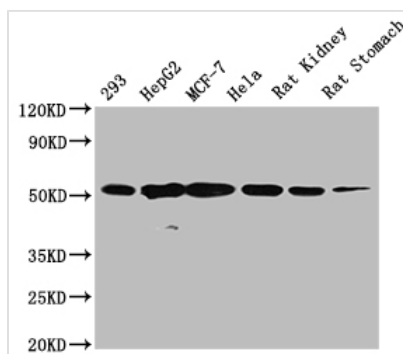
Secondary

Goat polyclonal to mouse IgG at 1/50000 dilution

Predicted band size: 55 KDa

Observed band size: 55 KDa

Exposure time:5s



### Western Blot

Positive WB detected in: 293 whole cell lysate, HepG2 whole cell lysate, MCF-7 whole cell lysate, HeLa whole cell lysate, Rat kidney tissue, Rat stomach tissue

All lanes TUBB antibody at 1:5000

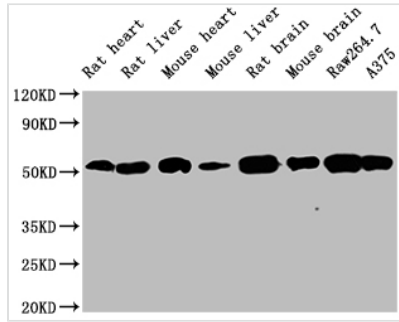
Secondary

Goat polyclonal to mouse IgG at 1/50000 dilution

Predicted band size: 55 KDa

Observed band size: 55 KDa

Exposure time:5min



**Western Blot**

Positive WB detected in: Rat heart tissue ,Rat liver tissue, Mouse heart tissue, Mouse liver tissue, Rat brain tissue, Mouse brain tissue, Raw264.7 whole cell lysate, A375 whole cell lysate

All lanes TUBB antibody at 1:5000

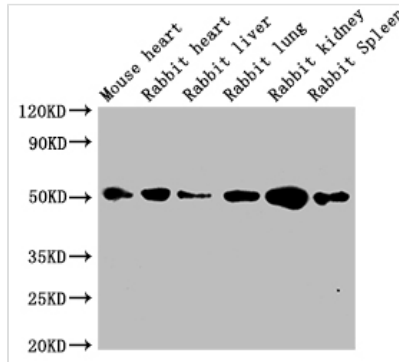
Secondary

Goat polyclonal to mouse IgG at 1/50000 dilution

Predicted band size: 55 KDa

Observed band size: 55 KDa

Exposure time:5min



**Western Blot**

Positive WB detected in: Mouse heart tissue, Rabbit heart tissue, Rabbit liver tissue, Rabbit lung tissue, Rabbit kidney tissue, Rabbit spleen tissue

All lanes TUBB antibody at 1:5000

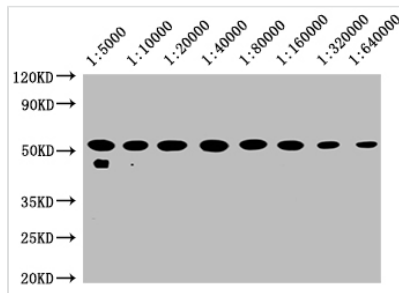
Secondary

Goat polyclonal to mouse IgG at 1/50000 dilution

Predicted band size: 55 KDa

Observed band size: 55 KDa

Exposure time:5min



**Western Blot**

Positive WB detected in: 20µg hela whole cell lysate TUBB antibody at 1:5000, 1:10000, 1:20000, 1:40000, 1:80000, 1:160000, 1:320000, 1:640000

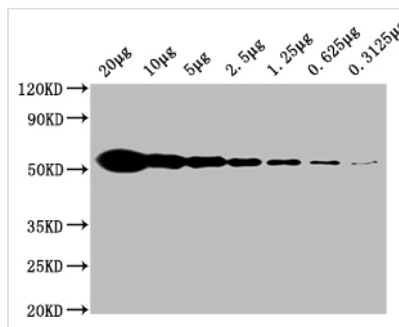
Secondary

Goat polyclonal to mouse IgG at 1/50000 dilution

Predicted band size: 55 KDa

Observed band size: 55 KDa

Exposure time:5min



**Western Blot**

Positive WB detected in: HeLa whole cell lysate at 20µg, 10µg, 5µg, 2.5µg, 1.25µg, 0.625µg, 0.3125µg All lanes:TUBB antibody at 1:5000

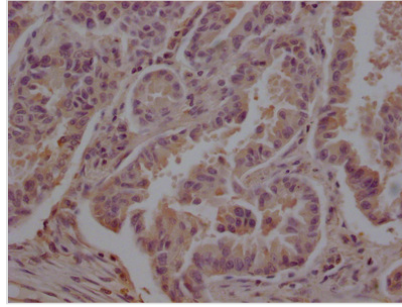
Secondary

Goat polyclonal to mouse IgG at 1/50000 dilution

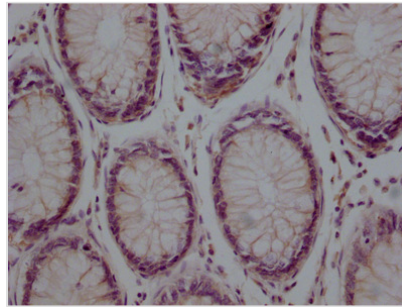
Predicted band size: 55 KDa

Observed band size: 55 KDa

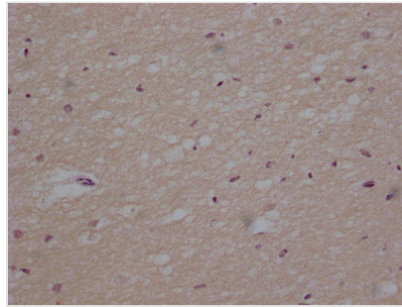
Exposure time:5min



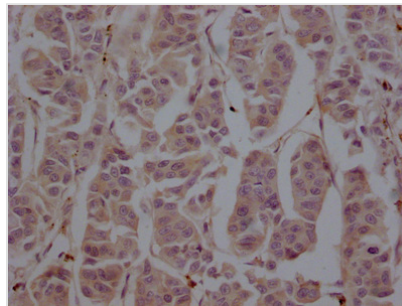
IHC image of CSB-MA025318A0m diluted at 1:200 and staining in paraffin-embedded human lung cancer performed on a Leica Bond™ system. After dewaxing and hydration, antigen retrieval was mediated by high pressure in a citrate buffer (pH 6.0). Section was blocked with 10% normal goat serum 30min at 37°C Then primary antibody (1% BSA) was incubated at 4°C overnight. The primary is detected by a Goat anti-Mouse IgG labeled by HRP and visualized using 0.05% DAB.



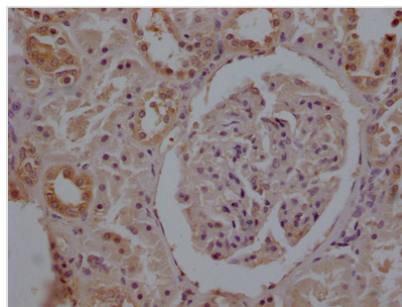
IHC image of CSB-MA025318A0m diluted at 1:200 and staining in paraffin-embedded human colon cancer performed on a Leica Bond™ system. After dewaxing and hydration, antigen retrieval was mediated by high pressure in a citrate buffer (pH 6.0). Section was blocked with 10% normal goat serum 30min at 37°C Then primary antibody (1% BSA) was incubated at 4°C overnight. The primary is detected by a Goat anti-Mouse IgG labeled by HRP and visualized using 0.05% DAB.



IHC image of CSB-MA025318A0m diluted at 1:200 and staining in paraffin-embedded human brain tissue performed on a Leica Bond™ system. After dewaxing and hydration, antigen retrieval was mediated by high pressure in a citrate buffer (pH 6.0). Section was blocked with 10% normal goat serum 30min at 37°C Then primary antibody (1% BSA) was incubated at 4°C overnight. The primary is detected by a Goat anti-Mouse IgG labeled by HRP and visualized using 0.05% DAB.



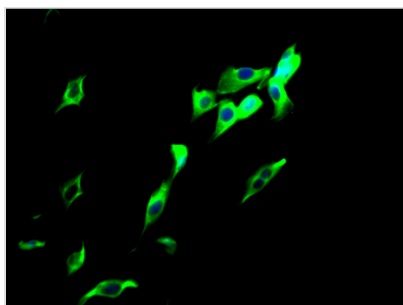
IHC image of CSB-MA025318A0m diluted at 1:200 and staining in paraffin-embedded human breast cancer performed on a Leica Bond™ system. After dewaxing and hydration, antigen retrieval was mediated by high pressure in a citrate buffer (pH 6.0). Section was blocked with 10% normal goat serum 30min at 37°C Then primary antibody (1% BSA) was incubated at 4°C overnight. The primary is detected by a Goat anti-Mouse IgG labeled by HRP and visualized using 0.05% DAB.



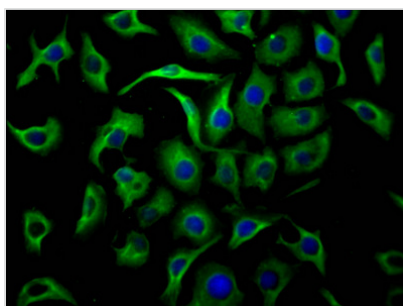
IHC image of CSB-MA025318A0m diluted at 1:200 and staining in paraffin-embedded human kidney tissue performed on a Leica Bond™ system. After dewaxing and hydration, antigen retrieval was mediated by high pressure in a citrate buffer (pH 6.0). Section was blocked with 10% normal goat serum 30min at 37°C Then primary antibody (1% BSA) was incubated at 4°C overnight. The primary is detected by a Goat anti-Mouse IgG labeled by HRP and visualized using 0.05% DAB.



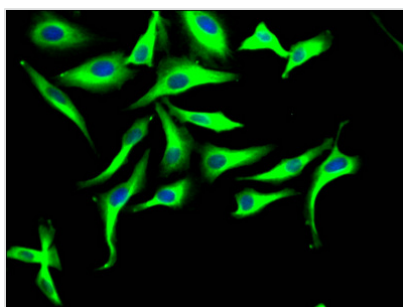
anti-Mouse IgG labeled by HRP and visualized using 0.05% DAB.



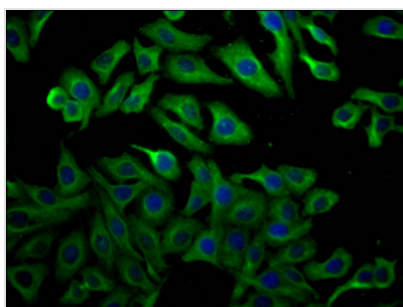
Immunofluorescence staining of NIH/3T3 cells with CSB-MA025318A0m at 1:100, counter-stained with DAPI. The cells were fixed in 4% formaldehyde, permeated by 0.2% TritonX-100, and blocked in 10% normal Goat Serum. The cells were then incubated with the antibody overnight at 4°C. Nuclear DNA was labeled in blue with DAPI. The secondary antibody was FITC-conjugated AffiniPure Goat Anti-Mouse IgG(H+L).



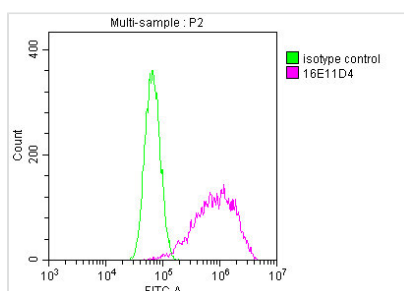
Immunofluorescence staining of A549 cells with CSB-MA025318A0m at 1:100, counter-stained with DAPI. The cells were fixed in 4% formaldehyde, permeated by 0.2% TritonX-100, and blocked in 10% normal Goat Serum. The cells were then incubated with the antibody overnight at 4°C. Nuclear DNA was labeled in blue with DAPI. The secondary antibody was FITC-conjugated AffiniPure Goat Anti-Mouse IgG(H+L).



Immunofluorescence staining of HeLa cells with CSB-MA025318A0m at 1:100, counter-stained with DAPI. The cells were fixed in 4% formaldehyde, permeated by 0.2% TritonX-100, and blocked in 10% normal Goat Serum. The cells were then incubated with the antibody overnight at 4°C. Nuclear DNA was labeled in blue with DAPI. The secondary antibody was FITC-conjugated AffiniPure Goat Anti-Mouse IgG(H+L).



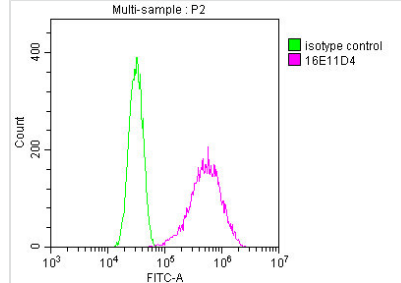
Immunofluorescence staining of HepG2 cells with CSB-MA025318A0m at 1:100, counter-stained with DAPI. The cells were fixed in 4% formaldehyde, permeated by 0.2% TritonX-100, and blocked in 10% normal Goat Serum. The cells were then incubated with the antibody overnight at 4°C. Nuclear DNA was labeled in blue with DAPI. The secondary antibody was FITC-conjugated AffiniPure Goat Anti-Mouse IgG(H+L).



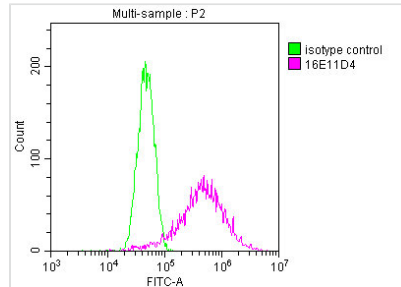
Overlay Peak curve showing A549 cells stained with CSB-MA025318A0m (red line) at 1:200. The cells were fixed in 4% formaldehyde and permeated by 0.2% TritonX-100. Then 10% normal goat serum was incubated to block non-specific protein-protein interactions followed by the antibody (1µg/1\*10<sup>6</sup> cells) for 1 h at 4°C. The secondary antibody used was FITC-conjugated Goat Anti-Mouse IgG(H+L) at 1/100 dilution for



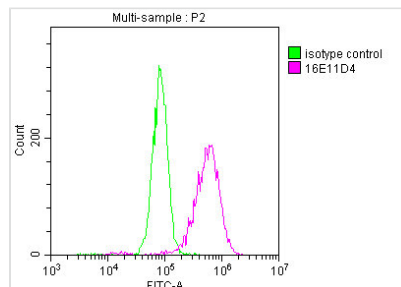
30min at 4°C. Isotype control antibody (green line) was mouse IgG2b (1µg/1\*10<sup>6</sup>cells) used under the same conditions. Acquisition of >10,000 events was performed.



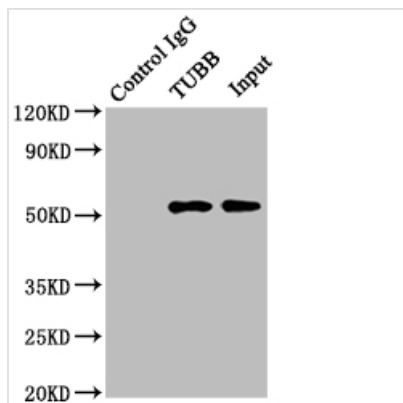
Overlay Peak curve showing HepG2 cells stained with CSB-MA025318A0m (red line) at 1:200. The cells were fixed in 4% formaldehyde and permeated by 0.2% TritonX-100. Then 10% normal goat serum was Incubated to block non-specific protein-protein interactions followed by the antibody (1µg/1\*10<sup>6</sup>cells) for 1 h at 4°C. The secondary antibody used was FITC-conjugated Goat Anti-Mouse IgG(H+L) at 1/100 dilution for 30min at 4°C. Isotype control antibody (green line) was mouse IgG2b (1µg/1\*10<sup>6</sup>cells) used under the same conditions. Acquisition of >10,000 events was performed.



Overlay Peak curve showing MCF-7 cells stained with CSB-MA025318A0m (red line) at 1:200. The cells were fixed in 4% formaldehyde and permeated by 0.2% TritonX-100. Then 10% normal goat serum was Incubated to block non-specific protein-protein interactions followed by the antibody (1µg/1\*10<sup>6</sup>cells) for 1 h at 4°C. The secondary antibody used was FITC-conjugated Goat Anti-Mouse IgG(H+L) at 1/100 dilution for 30min at 4°C. Isotype control antibody (green line) was mouse IgG2b (1µg/1\*10<sup>6</sup>cells) used under the same conditions. Acquisition of >10,000 events was performed.



Overlay Peak curve showing NIH/3T3 cells stained with CSB-MA025318A0m (red line) at 1:200. The cells were fixed in 4% formaldehyde and permeated by 0.2% TritonX-100. Then 10% normal goat serum was Incubated to block non-specific protein-protein interactions followed by the antibody (1µg/1\*10<sup>6</sup>cells) for 1 h at 4°C. The secondary antibody used was FITC-conjugated Goat Anti-Mouse IgG(H+L) at 1/100 dilution for 30min at 4°C. Isotype control antibody (green line) was mouse IgG2b (1µg/1\*10<sup>6</sup>cells) used under the same conditions. Acquisition of >10,000 events was performed.



Immunoprecipitating TUBB in HeLa whole cell lysate

Lane 1: Mouse control IgG instead of CSB-MA025318A0m in HeLa whole cell lysate.

Lane 2: CSB-MA025318A0m (2 $\mu$ g) + HeLa whole cell lysate (500 $\mu$ g)

Lane 3: HeLa whole cell lysate (5 $\mu$ g)

For western blotting, the blot was detected with CSB-MA025318A0m at 1:2000, and a HRP-conjugated Protein G antibody was used as the secondary antibody at 1:5000

## Usage

For Research Use Only. Not for use in diagnostic or therapeutic procedures.