



# Recombinant Paguma larvata Angiotensin-converting enzyme 2 (ACE2), partial (Active)

|                            |  |
|----------------------------|--|
| <b>Product Code</b>        | CSB-MP684964PAL  |
| <b>Abbreviation</b>        | Recombinant Paguma larvata ACE2 protein, partial (Active)  |
| <b>Storage</b>             | The shelf life is related to many factors, storage state, buffer ingredients, storage temperature and the stability of the protein itself. Generally, the shelf life of liquid form is 6 months at -20°C/-80°C. The shelf life of lyophilized form is 12 months at -20°C/-80°C.  |
| <b>Uniprot No.</b>         | Q56NL1   |
| <b>Form</b>                | Lyophilized powder   |
| <b>Storage Buffer</b>      | Lyophilized from a 0.2 µm filtered PBS, 6% Trehalose, pH 7.4   |
| <b>Product Type</b>        | Recombinant Protein  |
| <b>Immunogen Species</b>   | Paguma larvata (Masked palm civet)   |
| <b>Biological Activity</b> | ①Measured by its binding ability in a functional ELISA. Immobilized SARS-CoV S-RBD (CSB-MP348663HQE) at 2 µg/ml can bind Paguma larvata ACE2, the EC <sub>50</sub> is 5.056-7.559 ng/ml.②Recombinant Paguma larvata ACE2 protein (CSB-MP684964PAL) enzyme activity is measured by its ability to cleave fluorogenic peptide substrate(Mca-Ala-Pro-Lys(Dnp)-OH), The Km is 22.84 µM.  |
| <b>Purity</b>              | Greater than 90% as determined by SDS-PAGE.<br>Greater than 90% as determined by SEC-HPLC.   |
| <b>Sequence</b>            | QSTTEELAKTFLETFNYEAQELSYQSSVASWNYNTNITDENAKNMNEAGAKW<br>SAYYEEQSKLAQTYPLAEIQDAKIKRQLQALQQSGSSVLSADKSQRLNTILNAM<br>STIYSTGKACNPNNPQECLLLEPGLDNIMENSKDYNERLWAWEGWRAEVGKQ<br>LRPLYEEYVALKNEMARANNYEDYGDYWRGDYEEEWTTGGYNYSRNQLIQDV<br>EDTFEQIKPLYQHLHAYVRAKLMDTYPSTRISRTGCLPAHLLGDMWGRFWTNLY<br>PLTVFPGQKPNIDVTDAMVNQNW DARRIFKEAEKFFVSVGLPNMTQGFWENS<br>MLTEPGDGRKVVCHPTAWDLGKGFRIKMCTKVTMDDFLTAHHEMGGHIQYD<br>MAYAAQPFLLRNGANEGFHEAVGEIMSLSAATPNHLKTIGLLSPAFSENETEI<br>NFLKQALTIVGTLPFTYMLEKWRWMVFKGAIPEQWMQKWWEMKRNIVGVV<br>EPVPHDETYCDPASLFHVANDYSFIRYYTRTIYQFQFQEALCQIAKHEGPHKHC<br>DISNSTEAGKKLLEMLSLGRSEPWTLALERVVGAKNMNVTPLLNYFEPLFTWL<br>KEQNRNSFVGWDTDWRPYSQSIKVRISLKSALGEKAYEWNNDNEMYLFRSSI<br>AYAMREYFSKVKNQITIPFVEDNVVSDLKPRISFNFFVTFSSNNVSDVIPRSEVE<br>DAIRMSRSRINDAFRLDDNSLEFLGIEPTLSPPYRPPVT |
| <b>Source</b>              | Mammalian cell   |
| <b>Target Names</b>        | ACE2   |
| <b>Expression Region</b>   | 18-740aa   |
| <b>Notes</b>               | Repeated freezing and thawing is not recommended. Store working aliquots at 4°C for up to one week.  |

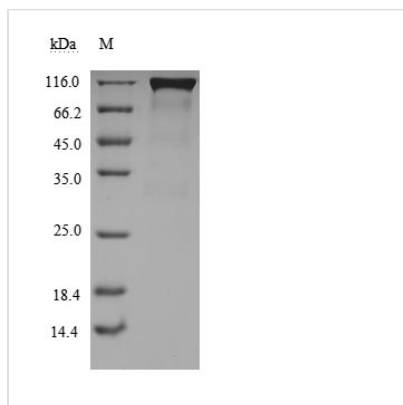


**Tag Info** C-terminal hFc1-tagged

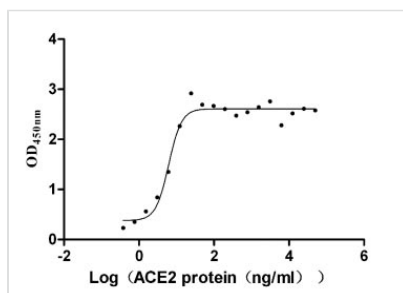
**Mol. Weight** 112.7

**Protein Length** Partial

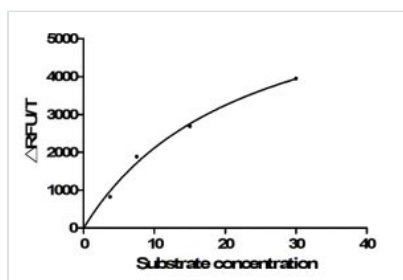
**Image**



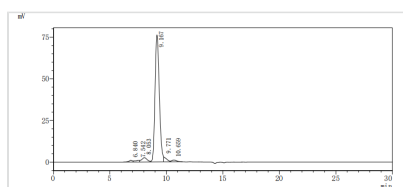
(Tris-Glycine gel) Discontinuous SDS-PAGE (reduced) with 5% enrichment gel and 15% separation gel.



**Activity**  
Measured by its binding ability in a functional ELISA. Immobilized SARS-CoV S-RBD (CSB-MP348663HQE) at 2 µg/ml can bind Paguma larvata ACE2, the EC<sub>50</sub> is 5.056-7.559 ng/ml.



**Activity**  
Recombinant Paguma larvata ACE2 protein (CSB-MP684964PAL) enzyme activity is Activity Measured by its ability to cleave fluorogenic peptide substrate(Mca-Ala-Pro-Lys(Dnp)-OH), The Km is 22.84 µM.



The purity of ACE2 was greater than 90% as determined by SEC-HPLC

**Endotoxin** Less than 1.0 EU/ug as determined by LAL method.

**Reconstitution** We recommend that this vial be briefly centrifuged prior to opening to bring the contents to the bottom. Please reconstitute protein in deionized sterile water to a concentration of 0.1-1.0 mg/mL. We recommend to add 5-50% of glycerol (final concentration) and aliquot for long-term storage at -20°C/-80°C. Our default final concentration of glycerol is 50%. Customers could use it as reference.

**Shelf Life** The shelf life is related to many factors, storage state, buffer ingredients,



storage temperature and the stability of the protein itself. Generally, the shelf life of liquid form is 6 months at -20°C/-80°C. The shelf life of lyophilized form is 12 months at -20°C/-80°C.