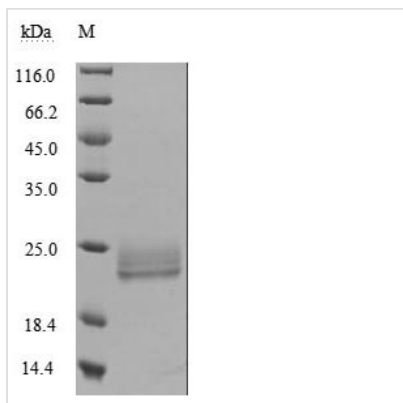


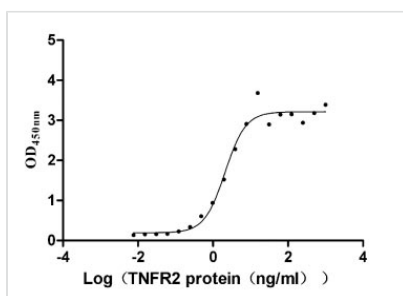


Recombinant Human Lymphotoxin-alpha (LTA) (Active)

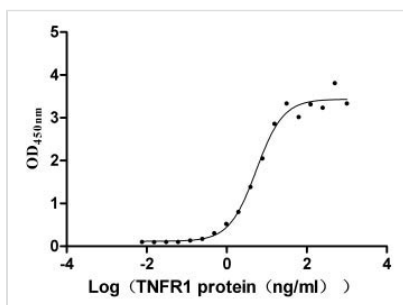
Product Code	CSB-MP013218HU
Abbreviation	Recombinant Human LTA protein (Active)
Storage	The shelf life is related to many factors, storage state, buffer ingredients, storage temperature and the stability of the protein itself. Generally, the shelf life of liquid form is 6 months at -20°C/-80°C. The shelf life of lyophilized form is 12 months at -20°C/-80°C.
Uniprot No.	P01374
Form	Lyophilized powder
Storage Buffer	Lyophilized from a 0.2 µm filtered 20 mM Tris-HCl, 0.5 M NaCl, 6% Trehalose, pH 8.0
Product Type	Recombinant Protein
Immunogen Species	Homo sapiens (Human)
Biological Activity	①Measured by its binding ability in a functional ELISA. Immobilized LTA at 5 µg/ml can bind human TNFRSF1B (CSB-MP023978HU2), the EC ₅₀ is 1.632-2.699 ng/ml.②Measured by its binding ability in a functional ELISA. Immobilized LTA at 5 µg/ml can bind human TNFR1(CSB-MP023977HU1), the EC ₅₀ of human LTA protein is 4.409-6.797 ng/ml.
Purity	Greater than 95% as determined by SDS-PAGE.
Sequence	LPGVGLTPSAAQTARQHPKMHLAHSTLKPA AHLIGDPSKQNSLLWRANTDRA FLQDGFSLSNNSLLVPTSGIYFVYSQVVFSGKAYSPKATSSPLYLAHEVQLFSS QYPFHVPLLSSQKMVYPGLQEPWLHSMYHGAAFQLTQGDQLSTHTDGIPHLV LSPSTVFFGAFAL
Source	Mammalian cell
Target Names	LTA
Expression Region	35-205aa
Notes	Repeated freezing and thawing is not recommended. Store working aliquots at 4°C for up to one week.
Tag Info	N-terminal 6xHis-tagged
Mol. Weight	20.8 kDa
Protein Length	Full Length of Mature Protein
Image	



(Tris-Glycine gel) Discontinuous SDS-PAGE (reduced) with 5% enrichment gel and 15% separation gel.



Activity
Measured by its binding ability in a functional ELISA. Immobilized LTA at 5 $\mu\text{g/ml}$ can bind human TNFRSF1B (CSB-MP023978HU2), the EC_{50} is 1.632-2.699 ng/ml.



Activity
Measured by its binding ability in a functional ELISA. Immobilized LTA at 5 $\mu\text{g/ml}$ can bind human TNFR1 (CSB-MP023977HU1), the EC_{50} of human LTA protein is 4.409-6.797 ng/ml.

Endotoxin

Less than 1.0 EU/ μg as determined by LAL method.

Reconstitution

We recommend that this vial be briefly centrifuged prior to opening to bring the contents to the bottom. Please reconstitute protein in deionized sterile water to a concentration of 0.1-1.0 mg/mL. We recommend to add 5-50% of glycerol (final concentration) and aliquot for long-term storage at $-20^{\circ}\text{C}/-80^{\circ}\text{C}$. Our default final concentration of glycerol is 50%. Customers could use it as reference.

Shelf Life

The shelf life is related to many factors, storage state, buffer ingredients, storage temperature and the stability of the protein itself. Generally, the shelf life of liquid form is 6 months at $-20^{\circ}\text{C}/-80^{\circ}\text{C}$. The shelf life of lyophilized form is 12 months at $-20^{\circ}\text{C}/-80^{\circ}\text{C}$.