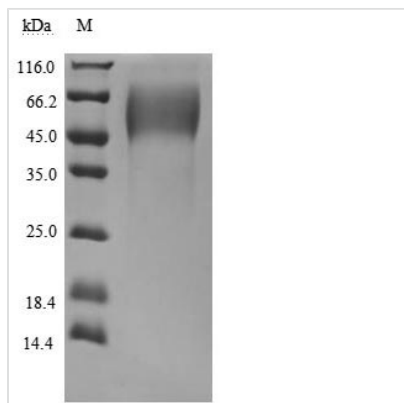


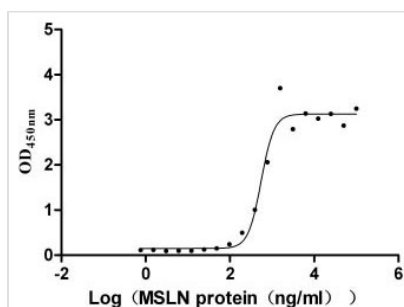


Recombinant Human Mucin-16 (MUC16), partial (Active)

Product Code	CSB-MP704410HU3c7
Abbreviation	Recombinant Human MUC16 protein, partial (Active)
Storage	The shelf life is related to many factors, storage state, buffer ingredients, storage temperature and the stability of the protein itself. Generally, the shelf life of liquid form is 6 months at -20°C/-80°C. The shelf life of lyophilized form is 12 months at -20°C/-80°C.
Uniprot No.	Q8WXI7
Form	Lyophilized powder
Storage Buffer	Lyophilized from a 0.2 µm filtered 20 mM Tris-HCl, 0.5 M NaCl, 6% Trehalose, pH 8.0
Product Type	Recombinant Protein
Immunogen Species	Homo sapiens (Human)
Biological Activity	Measured by its binding ability in a functional ELISA. Immobilized MUC16 at 10 µg/ml can bind MSLN(CSB-MP015044HUc9), the EC ₅₀ is 460.7-662.2 ng/ml.
Purity	Greater than 95% as determined by SDS-PAGE.
Sequence	GFTHWIPVPTSSTPGTSTVDLGSGTPSSLPSPTTAGPLLVPFTLNFTITNLKYEE DMHCPGSRKFNTTERVLQSQLLGPMPFKNTSVGPLYSGCRLTLRSEKDGAATG VDAICTHRLDPKSPGVDREQLYWELSQLTNGIKELGPYTLDRNSLYVNGFTHQ TSAPNTSTPGTSTVDLGTSGTPSSLPSPTSAGPLLVPFTLNFTITNLQYEEEDMH HPGSRKFNTTERVLQQLLGPMPFKNTSVGLLYSGCRLTLRPEKNGAATGM
Source	Mammalian cell
Target Names	MUC16
Expression Region	12660-12923aa
Notes	Repeated freezing and thawing is not recommended. Store working aliquots at 4°C for up to one week.
Tag Info	C-terminal 6xHis-tagged
Mol. Weight	30.5 kDa
Protein Length	Partial
Image	



(Tris-Glycine gel) Discontinuous SDS-PAGE (reduced) with 5% enrichment gel and 15% separation gel.



Activity
Measured by its binding ability in a functional ELISA. Immobilized MUC16 at 10 $\mu\text{g/ml}$ can bind MSLN(CSB-MP015044HUc9), the EC_{50} is 460.7-662.2 ng/ml.

Endotoxin

Less than 1.0 EU/ μg as determined by LAL method.

Reconstitution

We recommend that this vial be briefly centrifuged prior to opening to bring the contents to the bottom. Please reconstitute protein in deionized sterile water to a concentration of 0.1-1.0 mg/mL. We recommend to add 5-50% of glycerol (final concentration) and aliquot for long-term storage at $-20^{\circ}\text{C}/-80^{\circ}\text{C}$. Our default final concentration of glycerol is 50%. Customers could use it as reference.

Shelf Life

The shelf life is related to many factors, storage state, buffer ingredients, storage temperature and the stability of the protein itself. Generally, the shelf life of liquid form is 6 months at $-20^{\circ}\text{C}/-80^{\circ}\text{C}$. The shelf life of lyophilized form is 12 months at $-20^{\circ}\text{C}/-80^{\circ}\text{C}$.