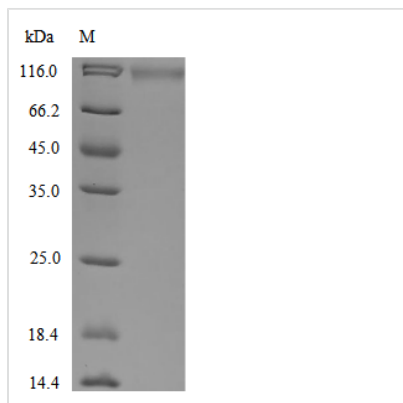




Recombinant Human Low-density lipoprotein receptor (LDLR), partial

Product Code	CSB-MPCSB-MP012846HU
Storage	The shelf life is related to many factors, storage state, buffer ingredients, storage temperature and the stability of the protein itself. Generally, the shelf life of liquid form is 6 months at -20°C/-80°C. The shelf life of lyophilized form is 12 months at -20°C/-80°C.
Uniprot No.	P01130
Form	Lyophilized powder
Storage Buffer	Lyophilized from a 0.2 µm sterile filtered 20 mM Tris-HCl, 0.5 M NaCl, 6% Trehalose, pH 8.0.
Product Type	Recombinant Protein
Immunogen Species	Homo sapiens (Human)
Purity	≥ 90% as determined by SDS-PAGE.
Sequence	AVGDR CERNEFQCQDGK CISYK WVCDGSAECQDGSDESQETCLSVTCKSGD FSCGGRVNR CIPQFWRC DGQVDCDNGSDEQGCPPKTC SQDEF RCHDGK CIS RQFVCDSDRDCLDGSDEASCPVLT CGPAS FQCNSSTCIPQLWACDNDPDCE DGSDEWPQR CRGLYVFQGDSSPCSAFEFHCLSGECIHSSWRCDGGPDCKD KSDEENCAVATCRPDEFQCS DGNCIHGS RQCDREYDCKDMSDEVGCVNVTL CEGPNKFKCHSGECITLDKVCNMARDCRDWSDEPIKECGTNECLDNNGGCS HVCNDLKIGYECLCPDGFQLVAQRRCEDIDECQDPDTC SQLCVNLEGGYK CQ CEEGFQLDPHTKACKAVGSIAYLFFTNRHEVRKMTLDRSEYTS LIPNLRNVVAL DTEVASNRIY WSDL SQR MICSTQLDRAHGVSSYDTVISRDIQAPDGLAVDWIH SNIYWTDSVLGTVSVADTKGVKRKTLFRENGSKPRAIVDPVHGFM YWTDWG TPAKIKK GGLNGVDIYSLVTENIQWPNGITLDLLSGRLYWVDSKLHSISSIDVNG GNRKTILEDEKRLAHPFSLAVFEDKVFWDIINEAIFSANRLTGSDVNLLAENLL SPEDMVL FHNLTQPRGVNWCERTTLSNGGCQYLCLPAPQINPHSPKFTCACP DGM LLARDMR SCLTEAEAAVATQETSTVRLKVSSTAVRTQHTTTTRPVPDTSRL PGATPGLTTVEIVTMSHQALGDVAGRGNEKKPSSVR
Source	Mammalian cell
Target Names	LDLR
Expression Region	22-788aa
Notes	Repeated freezing and thawing is not recommended. Store working aliquots at 4°C for up to one week.
Tag Info	Tag type will be determined during the manufacturing process.
Protein Length	Partial
Image	



(Tris-Glycine gel) Discontinuous SDS-PAGE (reduced) with 5% enrichment gel and 15% separation gel.

Endotoxin

Less than 1.0 EU/ug as determined by LAL method.

Reconstitution

We recommend that this vial be briefly centrifuged prior to opening to bring the contents to the bottom. Please reconstitute protein in deionized sterile water to a concentration of 0.1-1.0 mg/mL. We recommend to add 5-50% of glycerol (final concentration) and aliquot for long-term storage at -20°C/-80°C. Our default final concentration of glycerol is 50%. Customers could use it as reference.

Shelf Life

The shelf life is related to many factors, storage state, buffer ingredients, storage temperature and the stability of the protein itself.

Generally, the shelf life of liquid form is 6 months at -20°C/-80°C. The shelf life of lyophilized form is 12 months at -20°C/-80°C.