



Recombinant Human Leukemia inhibitory factor receptor (LIFR), partial (Active)

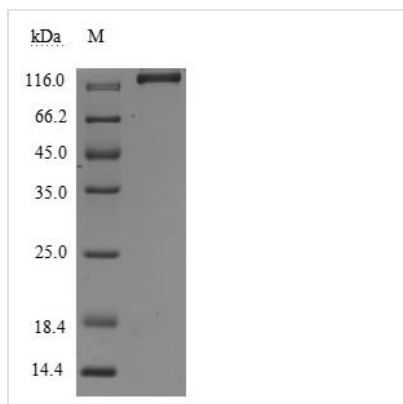
Product Code	CSB-MP012929HU <i>i</i> 9
Abbreviation	Recombinant Human LIFR protein, partial (Active)
Storage	The shelf life is related to many factors, storage state, buffer ingredients, storage temperature and the stability of the protein itself. Generally, the shelf life of liquid form is 6 months at -20°C/-80°C. The shelf life of lyophilized form is 12 months at -20°C/-80°C.
Uniprot No.	P42702
Form	Lyophilized powder
Storage Buffer	Lyophilized from a 0.2 μm filtered PBS, 6% Trehalose, pH 7.4
Product Type	Recombinant Protein
Immunogen Species	Homo sapiens (Human)
Biological Activity	Measured by its binding ability in a functional ELISA. Immobilized human LIF (CSB-MP012928HU) at 2 μg/ml can bind human LIFR, the EC ₅₀ is 11.68-15.52 ng/ml.
Purity	Greater than 95% as determined by SDS-PAGE.
Sequence	QKKGAPHDLKCVTNNLQVWNC ^{SWKAPSGTGRGTDYEVC} CIENRSRSCYQLEK TSIKIPALSHGDYEITINSLHDFGSSTSKFTLNEQNVSLIPDTPEILNLSADFSTST LYLKWNRG ^{SVFPHRSNVIWEIKVLRKESMELVKLVTHNTTLNGKDTLHHWS} WASDMPLECAIHFVEIRCYIDNLHFSGLEEWSDWSPVKNISWIPDSQTKVFPQ DKVILVGS ^{DITFCCVSQEKVLSALIGHTNCPLIHL} DGENVAIKIRNISVSASSGTN VVFTTEDNIFGT ^{VIFAGYPPDTPQQ} LNCEHDLKEIICSWNPGRVTALVGPRAT SYTLVESFSGKYVRLKRAEAPT ^{NESYQLLFQMLPNQEIYNFTLNAHNPLGRSQ} STILVNITEKVYPHTPT ^{SFKVKDINSTAVKLSWHLPGNFAKINFLCEIEIKKSNSV} QEQRNVTIKGVENSSYLVALDKLN ^{PYTLTYFRIRCSTETFWKWSKWSNKKQHL} TTEASPSKGPDTWREWSSDGKNLIIYWKPLPINEANGILSYNVSCSSDEETQ SLSEIPDPQHKAEIRLDKNDYIISV ^{VAKNSVGSPPSKIASMEIPND} DLKIEQVVG MGKGILLTWHYDPNMTCDYVIKWC ^{NSSRSEPCLMDWRKVPSNSTETVIESDE} FRPGIRYNFFLYGCRNQG ^{YQLLRSMIGYIEELAPIVAPNFTVEDTSADSILVKWE} DIPVEELRGFLRGYLFYFGKGERD ^{TSKMRVLESGRSDIKVKNITDISQKTLRIAD} LQGKTSYHLVLRAYTDGGVGPEKSMYVVTKENS
Source	Mammalian cell
Target Names	LIFR
Expression Region	45-833aa
Notes	Repeated freezing and thawing is not recommended. Store working aliquots at 4°C for up to one week.
Tag Info	C-terminal hFc1-Flag-tagged



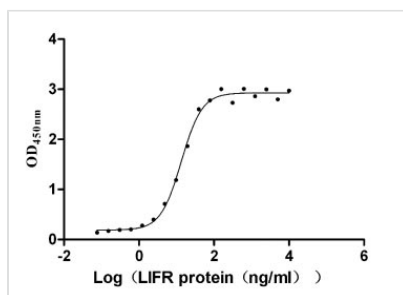
Mol. Weight 119.3 kDa

Protein Length Partial

Image



(Tris-Glycine gel) Discontinuous SDS-PAGE (reduced) with 5% enrichment gel and 15% separation gel.



Activity

Measured by its binding ability in a functional ELISA. Immobilized human LIF (CSB-MP012928HU) at 2 µg/ml can bind human LIFR, the EC₅₀ is 11.68-15.52 ng/ml.

Endotoxin Less than 1.0 EU/ug as determined by LAL method.

Reconstitution We recommend that this vial be briefly centrifuged prior to opening to bring the contents to the bottom. Please reconstitute protein in deionized sterile water to a concentration of 0.1-1.0 mg/mL. We recommend to add 5-50% of glycerol (final concentration) and aliquot for long-term storage at -20°C/-80°C. Our default final concentration of glycerol is 50%. Customers could use it as reference.

Shelf Life The shelf life is related to many factors, storage state, buffer ingredients, storage temperature and the stability of the protein itself. Generally, the shelf life of liquid form is 6 months at -20°C/-80°C. The shelf life of lyophilized form is 12 months at -20°C/-80°C.