

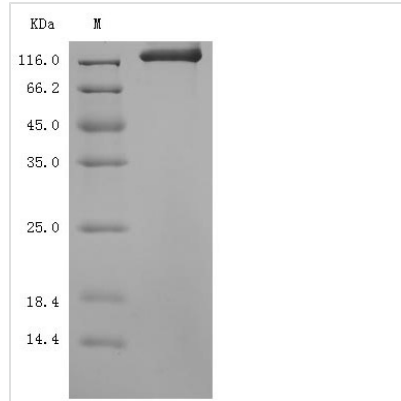


Recombinant Mouse Semaphorin-4D (Sema4d), partial (Active)

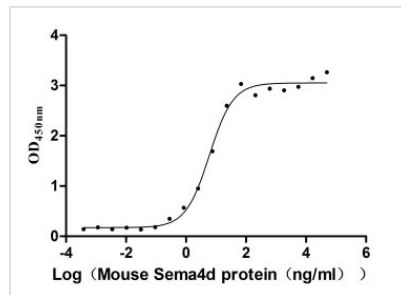
Product Code	CSB-MP020990MO
Abbreviation	Recombinant Mouse Sema4d protein, partial (Active)
Storage	The shelf life is related to many factors, storage state, buffer ingredients, storage temperature and the stability of the protein itself. Generally, the shelf life of liquid form is 6 months at -20°C/-80°C. The shelf life of lyophilized form is 12 months at -20°C/-80°C.
Uniprot No.	O09126
Form	Lyophilized powder
Storage Buffer	Lyophilized from a 0.2 μm filtered PBS, 6% Trehalose, pH 7.4
Product Type	Recombinant Protein
Immunogen Species	Mus musculus (Mouse)
Biological Activity	Measured by its binding ability in a functional ELISA. Immobilized Pepinemab at 2 μg/ml can bind Mouse Sema4d, the EC ₅₀ is 4.878-7.446 ng/ml.
Purity	≥ 95% as determined by SDS-PAGE.
Sequence	FAPVPRLTWEHGEVGLVQFHKPGIFNYSALLMSEDKDTLYVGAREAVFAVNAL NISEKQHEVYWKVSEDKKSKCAEKGKSKQTECLNYIRVLQPLSSTSLYVCGTN AFQPTCDHLNLTsfkflgksedgkgRCPFDPAHSYTSVMVGGELYSGTSYNF LGSEPIISRNSSHSPLRTEYAIPWLNESFVFADVIQKSPDGPEGEDDKVYFFF TEVSVEYEFVFKLMIPRVARVCKGDQGGRLTLQKKWTSFLKARLICSKPDSGL VFNILQDVFVLRAPGLKEPVFYAVFTPQLNNVGLSAVCAYTLATVEAVFSRGKY MQSATVEQSHTKWVRYNGPVPTPRPGACIDSEARAANYTSSLNLPDKTLQFV KDHPLMDDSVTPIDNRPKLIKDVNYTQIVVDRTQALDGTfyDVMFISTDRGAL HKAVILTKEVHVIEETQLFRDSEPVLTLLLSSKGRKFVYAGSNSGVVQAPLAF CEKHGSCEDCVLARDPYCAWSPAIAKACVTLHQEEASSRGWIQDMSGDTSSCL DKSKESFNQHFFKHGGTAEKCFQKSNLARVWVKFQNGELKAASPKYGFVG RKHLLIFNLSGDGSGVYQCLSEERVRNKTVSQLLAKHVLEVKMVPRTPPSPPTS EDAQTEGSKITSKMPVASTQGSSPPTPALWATSPRAATLPPKSSSGTSCEPK MVINTVPQLHSEKTVYLKSSDNR
Research Area	Immunology
Source	Mammalian cell
Target Names	Sema4d
Expression Region	24-733aa
Notes	Repeated freezing and thawing is not recommended. Store working aliquots at 4°C for up to one week.
Tag Info	C-terminal mFc-tagged
Mol. Weight	108.1 kDa


Protein Length

Partial

Image


(Tris-Glycine gel) Discontinuous SDS-PAGE (reduced) with 5% enrichment gel and 15% separation gel.



Activity
 Measured by its binding ability in a functional ELISA. Immobilized Pepinemab at 2 µg/ml can bind Mouse Sema4d, the EC₅₀ is 4.878-7.446 ng/ml.

Endotoxin

Less than 1.0 EU/ug as determined by LAL method.

Reconstitution

We recommend that this vial be briefly centrifuged prior to opening to bring the contents to the bottom. Please reconstitute protein in deionized sterile water to a concentration of 0.1-1.0 mg/mL. We recommend to add 5-50% of glycerol (final concentration) and aliquot for long-term storage at -20°C/-80°C. Our default final concentration of glycerol is 50%. Customers could use it as reference.

Shelf Life

The shelf life is related to many factors, storage state, buffer ingredients, storage temperature and the stability of the protein itself. Generally, the shelf life of liquid form is 6 months at -20°C/-80°C. The shelf life of lyophilized form is 12 months at -20°C/-80°C.