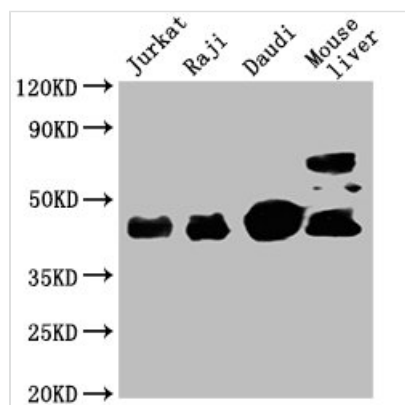




CD48 Monoclonal Antibody

Product Code	CSB-MA004941A1m
Storage	Upon receipt, store at -20°C or -80°C. Avoid repeated freeze.
Uniprot No.	P09326
Immunogen	Recombinant Human CD48 protein (27-220AA)
Raised In	Mouse
Species Reactivity	Human, Mouse
Tested Applications	ELISA, WB, IF, FC; Recommended dilution: WB: 1:2000-1:64000, IF: 1:50-1:200, FC: 1:100-1:500
Form	Liquid
Conjugate	Non-conjugated
Storage Buffer	Preservative: 0.03% Proclin 300 Constituents: 50% Glycerol, 0.01M PBS, PH 7.4
Purification Method	>95%, Protein G purified
Isotype	IgG1
Clonality	Monoclonal
Product Type	Monoclonal Antibody
Immunogen Species	Homo sapiens (Human)
Gene Names	CD48
Clone No.	26C2C11

Image



Western Blot

Positive WB detected in: Jurkat whole cell lysate, Raji whole cell lysate, Daudi whole cell lysate, Mouse liver tissue

All lanes: CD48 antibody at 1:2000

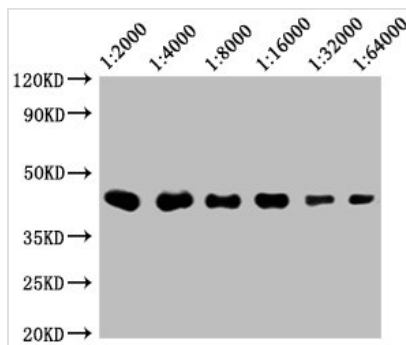
Secondary

Goat polyclonal to mouse IgG at 1/50000 dilution

Predicted band size: 28, 20 KDa

Observed band size: 43 KDa

Exposure time:5min



Western Blot

Positive WB detected in: 20µg Raji whole cell lysate

CD48 antibody at 1:2000, 1:4000, 1:8000, 1:16000, 1:32000, 1:64000

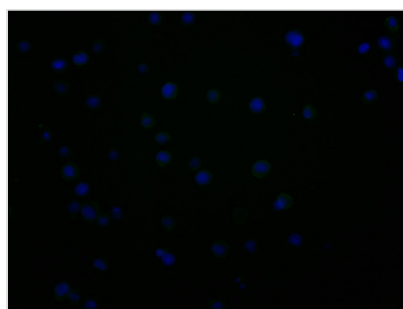
Secondary

Goat polyclonal to mouse IgG at 1/50000 dilution

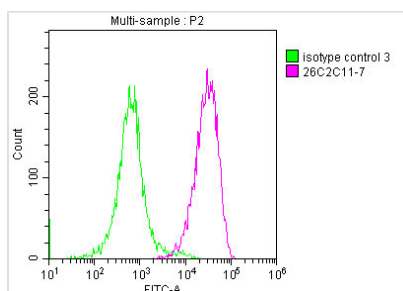
Predicted band size: 28, 20 KDa

Observed band size: 43 KDa

Exposure time:5min



Immunofluorescence staining of JK cells with CSB-MA004941A1m at 1:100, counter-stained with DAPI. The cells were fixed in 4% formaldehyde and blocked in 10% normal Goat Serum. The cells were incubated with the antibody overnight at 4°C. Nuclear DNA was labeled in blue with DAPI. The secondary antibody was FITC-conjugated AffiniPure Goat Anti-Mouse IgG (H+L).



Overlay Peak curve showing JK cells stained with CSB-MA004941A1m (red line) at 1:200. The cells were incubated in 10% normal goat serum to block non-specific protein-protein interactions followed by the antibody (1µg/1*10⁶cells) for 1h at 4°C. The secondary antibody used was FITC-conjugated Goat Anti-Mouse IgG(H+L) at 1/100 dilution for 30min at 4°C. Isotype control antibody (green line) was mouse IgG1 (1µg/1*10⁶cells) used under the same conditions. Acquisition of >10,000 events was performed.