



Recombinant Human Semaphorin-4D (SEMA4D), partial (Active)

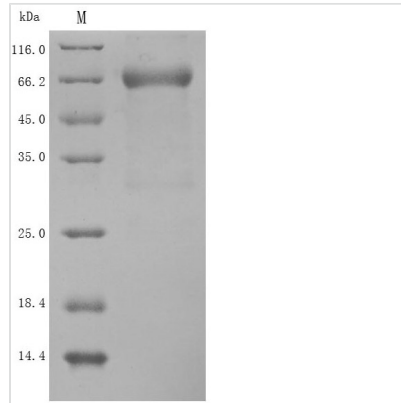
Product Code	CSB-MP835707HU
Abbreviation	Recombinant Human SEMA4D protein, partial (Active)
Storage	The shelf life is related to many factors, storage state, buffer ingredients, storage temperature and the stability of the protein itself. Generally, the shelf life of liquid form is 6 months at -20°C/-80°C. The shelf life of lyophilized form is 12 months at -20°C/-80°C.
Uniprot No.	Q92854
Form	Lyophilized powder
Storage Buffer	Lyophilized from a 0.2 µm filtered 20 mM Tris-HCl, 0.5 M NaCl, 6% Trehalose, pH 8.0
Product Type	Recombinant Protein
Immunogen Species	Homo sapiens (Human)
Biological Activity	Measured by its binding ability in a functional ELISA. Immobilized human SEMA4D at 2 µg/mL can bind Pepinemab, the EC ₅₀ is 4.035-5.743 ng/mL.
Purity	Greater than 90% as determined by SDS-PAGE.
Sequence	MAFAPIPRITWEHREVHLVQFHEPDIYNYSALLLSEDKDTLYIGAREAVFAVNAL NISEKQHEVYWKVSEDKKAKCAEKGKSKQTECLNYIRVLQPLSATSLSLYVCGTN AFQPACDHLNLTSEKFLGKNEGKGRCPFDPAHSYTSVMVDGELYSGTSYNF LGSEPIISRNSSHSPLRTEYAIPWLNESFVFADVIRKSPDSPDGEDDRVYFFFT EVSVEYEFVFRVLIPRIARVCKGDQGGRLTLQKKWTSFLKARLICSRPDGLVF NVLRDVFLRSPGLKVPVFYALFTPQLNNVGLSAVCAYNLSTAEVFSHGKYM QSTTVEQSHTKWVRYNGPVPKPRPGACIDSEARAANYTSSLNLPDKTLQFVK DHPLMDDSVTPIDNRPRIKDVNYTQIVVDRTQALDGTVYDVMFVSTDRGAL HKAISLEHAVHIIIEETQLFQDFEPVQTLSSKKNRFVYAGSNSGVVQAPLAF CGKHGTCEDCVLARDPYCAWSPPTATCVALHQTESPSRGLIQEMSGDASVCP DKSKGSYRQHFFKHGGTAELKCSQKSNLARVFWKQNGVLKAESPKYGLMG RKNLLIFNLSEGD SGVYQCLSEERVKNKTVFQVVAKHVLEVKVVPKPVVAPTL SVVQTEGSRIATKVLVASTQGSSPPTPAVQATSSGAILP PKPAPTGTSCPKI VINTVPQLHSEKTMYLKSSDNR
Research Area	Immunology
Source	Mammalian cell
Target Names	SEMA4D
Expression Region	22-734aa
Notes	Repeated freezing and thawing is not recommended. Store working aliquots at 4°C for up to one week.
Tag Info	C-terminal 10xHis-tagged



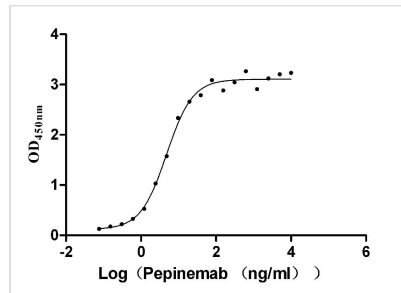
Mol. Weight 81.9 kDa

Protein Length Partial

Image



(Tris-Glycine gel) Discontinuous SDS-PAGE (reduced) with 5% enrichment gel and 15% separation gel.



Activity
Measured by its binding ability in a functional ELISA. Immobilized human SEMA4D at 2 µg/ml can bind Pepinemab, the EC₅₀ is 4.035-5.743 ng/mL.

Endotoxin Less than 1.0 EU/ug as determined by LAL method.

Reconstitution We recommend that this vial be briefly centrifuged prior to opening to bring the contents to the bottom. Please reconstitute protein in deionized sterile water to a concentration of 0.1-1.0 mg/mL. We recommend to add 5-50% of glycerol (final concentration) and aliquot for long-term storage at -20°C/-80°C. Our default final concentration of glycerol is 50%. Customers could use it as reference.

Shelf Life The shelf life is related to many factors, storage state, buffer ingredients, storage temperature and the stability of the protein itself. Generally, the shelf life of liquid form is 6 months at -20°C/-80°C. The shelf life of lyophilized form is 12 months at -20°C/-80°C.