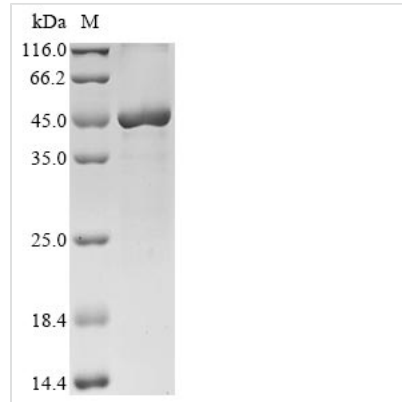




Recombinant *Saccharomyces cerevisiae* Sterol-4-alpha-carboxylate 3-dehydrogenase, decarboxylating (ERG26)

Product Code	CSB-EP346058SVG
Abbreviation	Recombinant SVG- <i>Saccharomyces cerevisiae</i> ERG26 protein
Storage	The shelf life is related to many factors, storage state, buffer ingredients, storage temperature and the stability of the protein itself. Generally, the shelf life of liquid form is 6 months at -20°C/-80°C. The shelf life of lyophilized form is 12 months at -20°C/-80°C.
Uniprot No.	P53199
Form	Liquid or Lyophilized powder
Storage Buffer	If the delivery form is liquid, the default storage buffer is Tris/PBS-based buffer, 5%-50% glycerol. If the delivery form is lyophilized powder, the buffer before lyophilization is Tris/PBS-based buffer, 6% Trehalose.
Product Type	Recombinant Protein
Immunogen Species	SVG- <i>Saccharomyces cerevisiae</i> (strain ATCC 204508 / S288c) (Baker's yeast)
Purity	≥ 90% as determined by SDS-PAGE.
Sequence	MSKIDSVLIIGGSGFLGLHLIQQFFDINPKPDIHIFDVRDLPEKLSKQFTFNVDDIK FHKGDLTSPDDMENAINESKANVVVHCASPMHGQNPDIYDIVNVKGTRNVIDM CKKCGVNILVYTSSAGVIFNGQDVHNADETWPIPEVPMDAYNETKAI AEDMVL KANDPSSDFYTVLRPAGIFGPGDRQLVPGLRQVAKLGQSKFQIGDNNNLF WTYAGNVADAHVLAQKLLDPKTRTAVSGETFFITNDTPTYFWALARTVWKAD GHIDKHVIVLKRPAICAGYLSEWVSKMLGKEPGLTPFRVKIVCAYRYHNIKA KLLGYTPRVGIEEGINKTLAWMDEGL
Research Area	Others
Source	E.coli
Target Names	ERG26
Expression Region	1-349aa
Notes	Repeated freezing and thawing is not recommended. Store working aliquots at 4°C for up to one week.
Tag Info	N-terminal 10xHis-tagged and C-terminal Myc-tagged
Mol. Weight	46.1 kDa
Protein Length	Full Length
Image	



(Tris-Glycine gel) Discontinuous SDS-PAGE (reduced) with 5% enrichment gel and 15% separation gel.

Reconstitution

We recommend that this vial be briefly centrifuged prior to opening to bring the contents to the bottom. Please reconstitute protein in deionized sterile water to a concentration of 0.1-1.0 mg/mL. We recommend to add 5-50% of glycerol (final concentration) and aliquot for long-term storage at $-20^{\circ}\text{C}/-80^{\circ}\text{C}$. Our default final concentration of glycerol is 50%. Customers could use it as reference.

Shelf Life

The shelf life is related to many factors, storage state, buffer ingredients, storage temperature and the stability of the protein itself.

Generally, the shelf life of liquid form is 6 months at $-20^{\circ}\text{C}/-80^{\circ}\text{C}$. The shelf life of lyophilized form is 12 months at $-20^{\circ}\text{C}/-80^{\circ}\text{C}$.