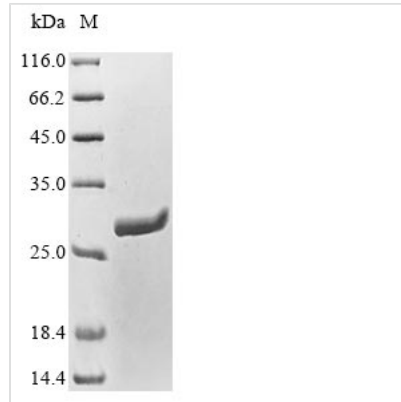


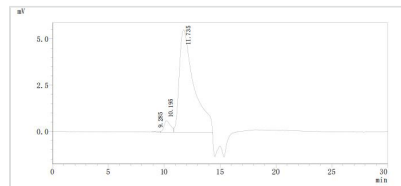


Recombinant *Saccharomyces cerevisiae* Phosphoglycerate mutase 1 (GPM1)

Product Code	CSB-YP017834SVG
Abbreviation	Recombinant <i>Saccharomyces cerevisiae</i> GPM1 protein
Storage	The shelf life is related to many factors, storage state, buffer ingredients, storage temperature and the stability of the protein itself. Generally, the shelf life of liquid form is 6 months at -20°C/-80°C. The shelf life of lyophilized form is 12 months at -20°C/-80°C.
Uniprot No.	P00950
Form	Liquid or Lyophilized powder
Storage Buffer	If the delivery form is liquid, the default storage buffer is Tris/PBS-based buffer, 5%-50% glycerol. If the delivery form is lyophilized powder, the buffer before lyophilization is Tris/PBS-based buffer, 6% Trehalose.
Product Type	Recombinant Protein
Immunogen Species	<i>Saccharomyces cerevisiae</i> (strain ATCC 204508 / S288c) (Baker's yeast)
Purity	≥ 90% as determined by SDS-PAGE. ≥ 90% as determined by SEC-HPLC.
Sequence	PKLVLRHGQSEWNEKNLFTGWVDVKLSAKGQQEAARAGELLKEKKVYPDVL YTSKLSRAIQTANIALEKADRLWIPVNRSWRLNERHYGDLQGKDKAETLKKFG EEKFNTYRRSFDVPPPIDASSPFSQKGDERYKYVDPNVLPETESLALVIDRLL PYWQDVIAKDLLSGKTMIAAHGNSLRGLVKHLEGISDADIAKLNIPTGIPLVFEL DENLKPSKPSYYLDPEAAAAGAAAVANQGKK
Research Area	others
Source	Yeast
Target Names	GPM1
Expression Region	2-247aa
Notes	Repeated freezing and thawing is not recommended. Store working aliquots at 4°C for up to one week.
Tag Info	N-terminal 6xHis-tagged
Mol. Weight	29.5 kDa
Protein Length	Full Length of Mature Protein
Image	



(Tris-Glycine gel) Discontinuous SDS-PAGE (reduced) with 5% enrichment gel and 15% separation gel.



The purity of GPM1 was greater than 90% as determined by SEC-HPLC

Reconstitution

We recommend that this vial be briefly centrifuged prior to opening to bring the contents to the bottom. Please reconstitute protein in deionized sterile water to a concentration of 0.1-1.0 mg/mL. We recommend to add 5-50% of glycerol (final concentration) and aliquot for long-term storage at -20°C/-80°C. Our default final concentration of glycerol is 50%. Customers could use it as reference.

Shelf Life

The shelf life is related to many factors, storage state, buffer ingredients, storage temperature and the stability of the protein itself.

Generally, the shelf life of liquid form is 6 months at -20°C/-80°C. The shelf life of lyophilized form is 12 months at -20°C/-80°C.