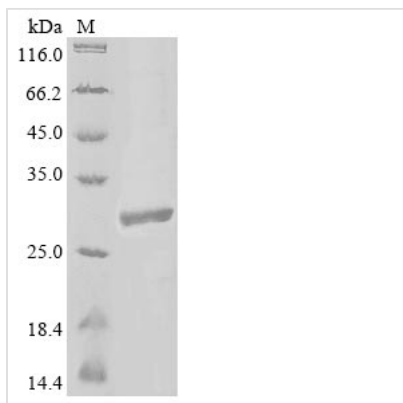




Recombinant Human Protein mono-ADP-ribosyltransferase PARP14 (PARP14), partial

Product Code	CSB-BP677190HU
Abbreviation	Recombinant Human PARP14 protein, partial
Storage	The shelf life is related to many factors, storage state, buffer ingredients, storage temperature and the stability of the protein itself. Generally, the shelf life of liquid form is 6 months at -20°C/-80°C. The shelf life of lyophilized form is 12 months at -20°C/-80°C.
Uniprot No.	Q460N5
Form	Liquid or Lyophilized powder
Storage Buffer	If the delivery form is liquid, the default storage buffer is Tris/PBS-based buffer, 5%-50% glycerol. If the delivery form is lyophilized powder, the buffer before lyophilization is Tris/PBS-based buffer, 6% Trehalose.
Product Type	Recombinant Protein
Immunogen Species	Homo sapiens (Human)
Purity	≥ 85% as determined by SDS-PAGE.
Sequence	IPAHWSDMKQQNFCVVELLPSDPEYNTVASKFNQTCSHFRIEKIERIQNPDLW NSYQAKKKTMDAKNGQTMNEKQLFHGTDAGSVPHVNRNGFNRSYAGKNAVA YGKGTYFAVNANYSANDTYSRPDANGRKHVYYVRLVTGIYTHGNHSLIVPPSK NPQNPTDLYDTVTDNVHHPSLFVAFYDYQAYPEYLITFRK
Research Area	Epigenetics and Nuclear Signaling
Source	Baculovirus
Target Names	PARP14
Expression Region	1605-1801aa
Notes	Repeated freezing and thawing is not recommended. Store working aliquots at 4°C for up to one week.
Tag Info	N-terminal 10xHis-tagged and C-terminal Myc-tagged
Mol. Weight	26.4 kDa
Protein Length	Partial
Image	



(Tris-Glycine gel) Discontinuous SDS-PAGE (reduced) with 5% enrichment gel and 15% separation gel.

Reconstitution

We recommend that this vial be briefly centrifuged prior to opening to bring the contents to the bottom. Please reconstitute protein in deionized sterile water to a concentration of 0.1-1.0 mg/mL. We recommend to add 5-50% of glycerol (final concentration) and aliquot for long-term storage at -20°C/-80°C. Our default final concentration of glycerol is 50%. Customers could use it as reference.

Shelf Life

The shelf life is related to many factors, storage state, buffer ingredients, storage temperature and the stability of the protein itself. Generally, the shelf life of liquid form is 6 months at -20°C/-80°C. The shelf life of lyophilized form is 12 months at -20°C/-80°C.