

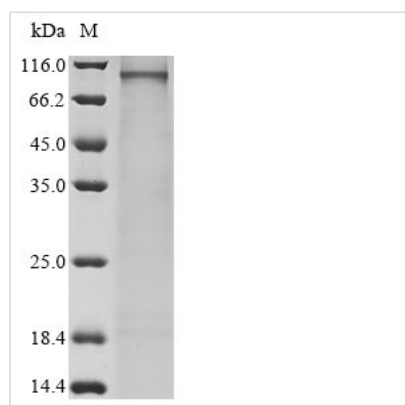


Recombinant Human Semaphorin-3G (SEMA3G)

Product Code	CSB-MP885719HU
Abbreviation	Recombinant Human SEMA3G protein
Storage	The shelf life is related to many factors, storage state, buffer ingredients, storage temperature and the stability of the protein itself. Generally, the shelf life of liquid form is 6 months at -20°C/-80°C. The shelf life of lyophilized form is 12 months at -20°C/-80°C.
Uniprot No.	Q9NS98
Form	Liquid or Lyophilized powder
Storage Buffer	If the delivery form is liquid, the default storage buffer is Tris/PBS-based buffer, 5%-50% glycerol. If the delivery form is lyophilized powder, the buffer before lyophilization is Tris/PBS-based buffer, 6% Trehalose.
Product Type	Recombinant Protein
Immunogen Species	Homo sapiens (Human)
Purity	Greater than 90% as determined by SDS-PAGE.
Sequence	<p> GPSPGPSVPRRLRLSYRDLLSANRSAIFLGPQGSLNLQAMYLDEYRDRLFGLGGL DALYSLRLDQAWPDPREVLWPPQPGQREECVRKGRDPLTECANFVRVLQPH NRTHLLACGTGAFQPTCALITVGHHRGEHVLHLEPGSVESGRGRCPHEPSRPF ASTFIDGELYTGLTADFLGREAMIFRSGGPRPALRSDSDQSLLDHPRFVMAARI PENSDQDNDKVYFFFSETVPSPDGGSNHVTVSRVGRVCVNDAGGQRVLVVK WSTFLKARLVCSVPGPGAETHFDQLEDVFLWPKAGKSLEVYALFSTVSAVF QGFAVCVYHMADIWEVFNGPFAHRDGPQHGWGPYGGKVPFPRPGVCPSKM TAQPGRPFGSTKDYPDEVLQFARAHPLMFWPVRPRHGRPVLVKTHLAQQLH QIVVDRVEAEDGTYDVIFLGTDSGSVLKVIALLQAGGSAEPEEVVLEELQVFKVP TPITEMEISVKRQMLYVGSRLGVAQLRLHQCYGTACAECCLARDPYCAWD GASCTHYRPSLGRFRFRQDIRHGNPALQCLGQSQEEEAAGLVAAATMVGTE HNSTFLECLPKSPQAAVRWLLQRPDGEQDQVKTDERVLHTEGLLFRRLSR FDAGTYTCTTLEHGFSQTVVRLALVVIVASQLDNLFPPEPKPEEPPARGGLAST PPKAWYKDILQLIGFANLPRVDEYCYCERVWCRGTTECSGCFRFRSRGKQARGK SWAGLELGKKMKSrvhAEHNRTPREVEAT </p>
Research Area	Immunology
Source	Mammalian cell
Target Names	SEMA3G
Expression Region	23-782aa
Notes	Repeated freezing and thawing is not recommended. Store working aliquots at 4°C for up to one week.
Tag Info	N-terminal 10xHis-tagged and C-terminal Myc-tagged
Mol. Weight	89.5 kDa
Protein Length	Full Length of Mature Protein



Image



(Tris-Glycine gel) Discontinuous SDS-PAGE (reduced) with 5% enrichment gel and 15% separation gel.

Reconstitution

We recommend that this vial be briefly centrifuged prior to opening to bring the contents to the bottom. Please reconstitute protein in deionized sterile water to a concentration of 0.1-1.0 mg/mL. We recommend to add 5-50% of glycerol (final concentration) and aliquot for long-term storage at -20°C/-80°C. Our default final concentration of glycerol is 50%. Customers could use it as reference.

Shelf Life

The shelf life is related to many factors, storage state, buffer ingredients, storage temperature and the stability of the protein itself.

Generally, the shelf life of liquid form is 6 months at -20°C/-80°C. The shelf life of lyophilized form is 12 months at -20°C/-80°C.