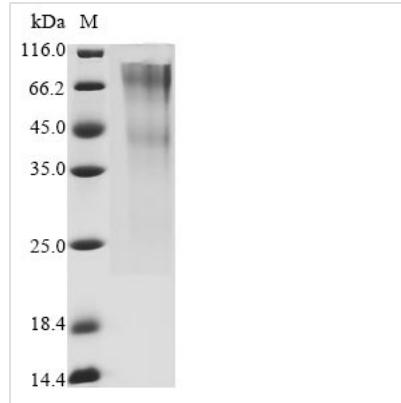


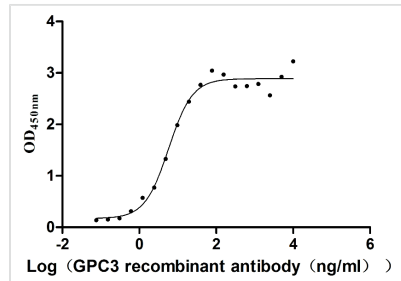


# Recombinant Human Glypican-3 (GPC3) (G537R), partial (Active)

<b>Product Code</b>	CSB-MP009705HU(M)
<b>Abbreviation</b>	Recombinant Human GPC3 protein (G537R), partial (Active)
<b>Storage</b>	The shelf life is related to many factors, storage state, buffer ingredients, storage temperature and the stability of the protein itself. Generally, the shelf life of liquid form is 6 months at -20°C/-80°C. The shelf life of lyophilized form is 12 months at -20°C/-80°C.
<b>Uniprot No.</b>	P51654
<b>Form</b>	Lyophilized powder
<b>Storage Buffer</b>	Lyophilized from a 0.2 μm filtered 20 mM Tris-HCl, 0.5 M NaCl, 6% Trehalose, pH 8.0
<b>Product Type</b>	Recombinant Protein
<b>Immunogen Species</b>	Homo sapiens (Human)
<b>Biological Activity</b>	Measured by its binding ability in a functional ELISA. Immobilized human GPC3 (G537R) at 5 μg/ml can bind Anti-GPC3 recombinant antibody, the EC <sub>50</sub> is 4.739-7.092 ng/ml.
<b>Purity</b>	Greater than 90% as determined by SDS-PAGE.
<b>Sequence</b>	<p>QPPPPPPDATCHQVRSFFQRLQPGLKWWPETPVPGSDLQVCLPKGPTCCSR            KMEEKYQLTARLNMEQLLQSASMELKFLIIQNAAVFQEAFEIVVRHAKNYTNAM            FKNNYPSLTPQAFEFVGEFFTDVSLYILGSDINVDDMVNELFDSLFPVIYTQLM            NPGLPDSALDINECLRGARRDLKVFGNFPKLIMTQVSKSLQVTRIFLQALNLGIE            VINTTDHLKFSKDCGRMLTRMWYCSYCQGLMMVKPCGGYCNVVMQGC MAG            VVEIDKYWREYILSLEELVNGMYRIYDMENVLLGLFSTIHDSIQYVQKNAGKLTT            TIGKLC AHSQQRQYRSAYYPEDLFIDKKVLKVAHVEHEETLSSRRRELIQKLKS            FISFYSALPGYICSHSPVAENDTLCWNGQELVERY SQKAARNGMKNQFN LHEL            KMKGPEPVVSQIIDKLKHINQLLRTMSMPKGRVLDKNLDEEGFESGDCGDDDED            ECIGGSGDGMIVKVNQLRFLAELAYDLVD DAPRNSQQATPKDNEISTFHNLG            NVH</p>
<b>Research Area</b>	Cancer
<b>Source</b>	Mammalian cell
<b>Target Names</b>	GPC3
<b>Expression Region</b>	25-559aa(G537R)
<b>Notes</b>	Repeated freezing and thawing is not recommended. Store working aliquots at 4°C for up to one week.
<b>Tag Info</b>	N-terminal 6xHis-Myc-tagged
<b>Mol. Weight</b>	65.0 kDa


**Protein Length**
**Partial**
**Image**


(Tris-Glycine gel) Discontinuous SDS-PAGE (reduced) with 5% enrichment gel and 15% separation gel.



**Activity**  
Measured by its binding ability in a functional ELISA. Immobilized human GPC3 (G537R) at 5  $\mu\text{g/ml}$  can bind Anti-GPC3 recombinant antibody, the  $\text{EC}_{50}$  is 4.739-7.092 ng/ml.

**Endotoxin**

Less than 1.0 EU/ $\mu\text{g}$  as determined by LAL method.

**Reconstitution**

We recommend that this vial be briefly centrifuged prior to opening to bring the contents to the bottom. Please reconstitute protein in deionized sterile water to a concentration of 0.1-1.0 mg/mL. We recommend to add 5-50% of glycerol (final concentration) and aliquot for long-term storage at  $-20^{\circ}\text{C}/-80^{\circ}\text{C}$ . Our default final concentration of glycerol is 50%. Customers could use it as reference.

**Shelf Life**

The shelf life is related to many factors, storage state, buffer ingredients, storage temperature and the stability of the protein itself.

Generally, the shelf life of liquid form is 6 months at  $-20^{\circ}\text{C}/-80^{\circ}\text{C}$ . The shelf life of lyophilized form is 12 months at  $-20^{\circ}\text{C}/-80^{\circ}\text{C}$ .