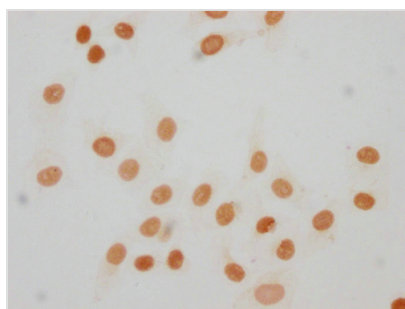




Mono-methyl-HIST1H1E (K63) Antibody

| | |
|----------------------------|--|
| Product Code | CSB-PA010380OA63me1HU |
| Storage | Upon receipt, store at -20°C or -80°C. Avoid repeated freeze. |
| Uniprot No. | P10412 |
| Immunogen | Synthesized peptide derived from Human Histone H1.4 protein (57-69aa) |
| Raised In | Rabbit |
| Species Reactivity | Human |
| Tested Applications | ELISA, ICC; Recommended dilution: ICC:1:10-1:100 |
| Form | Liquid |
| Conjugate | Non-conjugated |
| Storage Buffer | Preservative: 0.03% Proclin 300 Constituents: 50% Glycerol, 0.01M PBS, pH 7.4 |
| Purification Method | Antigen Affinity Purified |
| Isotype | IgG |
| Clonality | Polyclonal |
| Product Type | Polyclonal |
| Immunogen Species | Homo sapiens (Human) |
| Research Area | Epigenetics and Nuclear Signaling |
| Target Names | HIST1H1E |

Image



Immunocytochemistry analysis of CSB-PA010380OA63me1HU diluted at 1:30 and staining in HeLa cells performed on a Leica Bond™ system. The cells were fixed in 4% formaldehyde, permeabilized using 0.2% Triton X-100 and blocked with 10% normal goat serum 30min at RT. Then primary antibody (1% BSA) was incubated at 4°C overnight. The primary is detected by a biotinylated secondary antibody and visualized using an HRP conjugated SP system.

Usage

For Research Use Only. Not for use in diagnostic or therapeutic procedures.