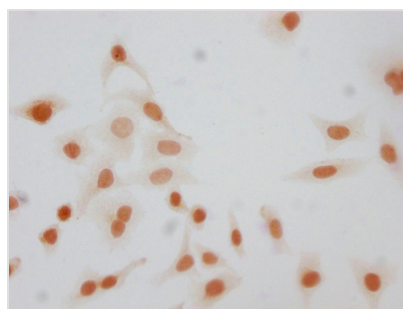




Phospho-HIST1H1E (S26) Antibody

Product Code	CSB-PA010380OA26phHU
Storage	Upon receipt, store at -20°C or -80°C. Avoid repeated freeze.
Uniprot No.	P10412
Immunogen	Synthesized peptide derived from Human Histone H1.4 protein (21-33aa)
Raised In	Rabbit
Species Reactivity	Human
Tested Applications	ELISA, ICC; Recommended dilution: ICC:1:10-1:100
Form	Liquid
Conjugate	Non-conjugated
Storage Buffer	Preservative: 0.03% Proclin 300 Constituents: 50% Glycerol, 0.01M PBS, pH 7.4
Purification Method	Antigen Affinity Purified
Isotype	IgG
Clonality	Polyclonal
Product Type	Polyclonal
Immunogen Species	Homo sapiens (Human)
Research Area	Epigenetics and Nuclear Signaling
Target Names	HIST1H1E

Image



Immunocytochemistry analysis of CSB-PA010380OA26phHU diluted at 1:10 and staining in HeLa cells (treated with 50nM Calyculin A for 30min) performed on a Leica Bond™ system. The cells were fixed in 4% formaldehyde, permeabilized using 0.2% Triton X-100 and blocked with 10% normal goat serum 30min at RT. Then primary antibody (1% BSA) was incubated at 4°C overnight. The primary is detected by a biotinylated secondary antibody and visualized using an HRP conjugated SP system.

Usage

For Research Use Only. Not for use in diagnostic or therapeutic procedures.