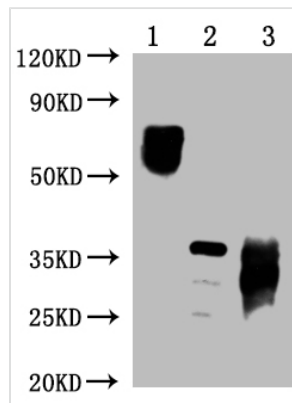




# PD-1 Monoclonal Antibody

<b>Product Code</b>	CSB-MA619964A0m
<b>Uniprot No.</b>	Q15116
<b>Immunogen</b>	Recombinant Human Programmed cell death protein 1 protein (21-170AA)
<b>Raised In</b>	Mouse
<b>Species Reactivity</b>	Human
<b>Tested Applications</b>	ELISA, WB; Recommended dilution: WB: 1:500-1:5000
<b>Form</b>	Liquid
<b>Conjugate</b>	Non-conjugated
<b>Storage Buffer</b>	Preservative: 0.03% Proclin 300 Constituents: 50% Glycerol, 0.01M PBS, PH 7.4
<b>Purification Method</b>	>95%, Protein G purified
<b>Isotype</b>	IgG1
<b>Clonality</b>	Monoclonal
<b>Product Type</b>	Monoclonal Antibody
<b>Immunogen Species</b>	Homo sapiens (Human)
<b>Target Names</b>	PDCD1
<b>Clone No.</b>	2D8D11

## Image



### Western Blot

Positive WB detected in: 10 $\mu$ g 293 whole cell lysate transfected with PD-1, 25ng recombinant protein from E.coli, 25ng recombinant protein from Mammalian cell  
 PD-1 antibody at 1:1000  
 Secondary  
 Goat polyclonal to mouse IgG at 1/50000 dilution  
 Predicted band size: 72, 36 KDa  
 Observed band size: 72, 36 KDa  
 Exposure time?5min

## Usage

For Research Use Only. Not for use in diagnostic or therapeutic procedures.