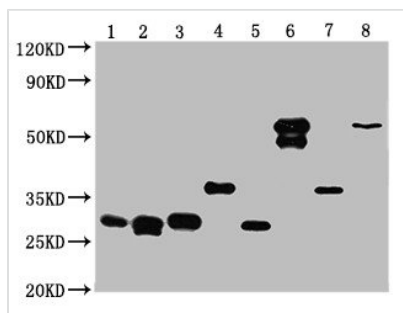




# GST Monoclonal Antibody

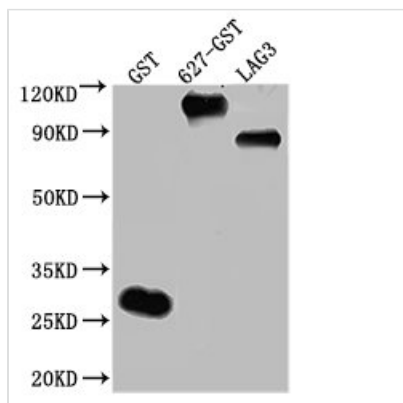
<b>Product Code</b>	CSB-MA000031M1m
<b>Storage</b>	Upon receipt, store at -20°C or -80°C. Avoid repeated freeze.
<b>Immunogen</b>	Recombinant GST Protein
<b>Raised In</b>	Mouse
<b>Species Reactivity</b>	All
<b>Tested Applications</b>	ELISA, WB, IF, FC, IP; Recommended dilution: WB:1:10000-1:640000, IF:1:100-1:300, FC: 1:100-1:300, IP: 1ul-5ul
<b>Form</b>	Liquid
<b>Conjugate</b>	Non-conjugated
<b>Storage Buffer</b>	Preservative: 0.03% Proclin 300 Constituents: 50% Glycerol, 0.01M PBS, PH 7.4
<b>Purification Method</b>	>95%, Protein A purified
<b>Isotype</b>	IgG2b
<b>Clonality</b>	Monoclonal
<b>Product Type</b>	Monoclonal Antibody
<b>Target Names</b>	GST
<b>Clone No.</b>	3D3E4

## Image



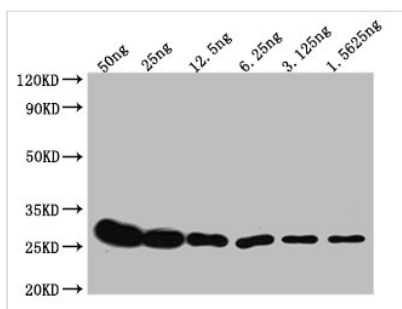
### Western Blot

Positive WB detected in: 25ng Recombinant protein with GST tag from E.coli  
 All lanes: GST antibody at 1:10000  
 Secondary  
 Goat polyclonal to mouse IgG at 1/50000 dilution  
 Predicted band size: 32.6, 30.1, 29.5, 37.4, 30.4, 60.5, 38.1, 61.6 KDa  
 Observed band size: 31, 30, 31, 37, 30, 60, 37, 61 KDa  
 Exposure time?5min



### Western Blot

Positive WB detected in: 50ng Recombinant protein with GST tag from E.coli  
 All lanes: GST antibody at 1:2000  
 Secondary  
 Goat polyclonal to mouse IgG at 1/50000 dilution  
 Predicted band size: 26, 102.9, 75.6 KDa  
 Observed band size: 26, 103, 76 KDa  
 Exposure time?1min



**Western Blot**

Positive WB detected in: Recombinant protein with GST tag from E.coli at 50ng, 25ng, 12.5ng, 6.25ng, 3.125ng, 1.5625ng

All lanes: GST antibody at 1:10000

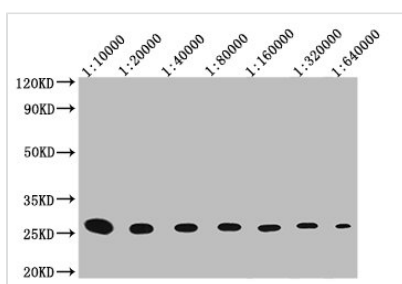
Secondary

Goat polyclonal to mouse IgG at 1/50000 dilution

Predicted band size: 26 KDa

Observed band size: 26 KDa

Exposure time?5min



**Western Blot**

Positive WB detected in: 25ng recombinant protein with GST tag from E.coli

GST antibody at 1:10000, 1:20000, 1:40000, 1:80000, 1:160000, 1:320000, 1:640000

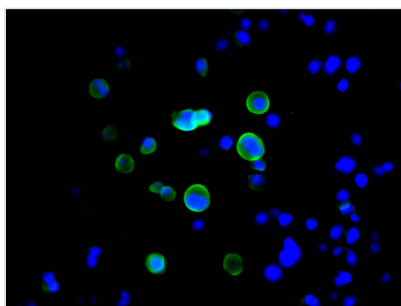
Secondary

Goat polyclonal to mouse IgG at 1/50000 dilution

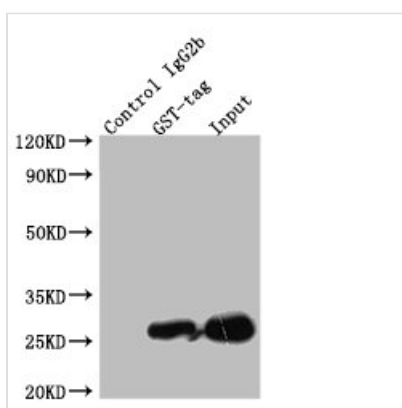
Predicted band size: 26 KDa

Observed band size: 26 KDa

Exposure time?5min



Immunofluorescence staining of 293F transfected cells with CSB-MA000031M1m at 1:94.5, counter-stained with DAPI. The cells were blocked in 10% normal Goat Serum and then incubated with the primary antibody overnight at 4°C. The secondary antibody was Alexa Fluor 488-conjugated AffiniPure Goat Anti-Mouse IgG(H+L).



Immunoprecipitating GST in transfected-293F whole cell lysate

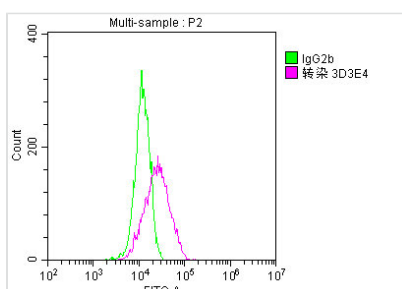
Lane 1: Mouse control IgG instead of CSB-MA000031M1m in 293F cell lysate Transfected with GST

Lane 2: CSB-MA000031M1m (5µg) +

Transfected-293F whole cell lysate (500µg)

Lane 3: Transfected-293F whole cell lysate (10µg)

For western blotting, the blot was detected with CSB-MA000031M1m at 1:2000, and a HRP-conjugated Protein G antibody was used as the secondary antibody at 1:50000



Overlay Peak curve showing 293F cells transfected with GST stained with CSB-MA000031M1m (red line) at 1:189. The cells were fixed in 4% formaldehyde and permeated by 0.2% TritonX-100. Then 10% normal goat serum was Incubated to block non-specific protein-protein interactions followed by the antibody (1µg/1\*10<sup>6</sup>cells) for 1 h at 4°C. The secondary antibody used was FITC-conjugated Goat Anti-Mouse IgG(H+L) at 1/100 dilution for



30min at 4°C. Isotype control antibody (green line) was mouse IgG2b (1µg/1\*10<sup>6</sup>cells) used under the same conditions. Acquisition of >10,000 events was performed.

---

**Usage**

For Research Use Only. Not for use in diagnostic or therapeutic procedures.