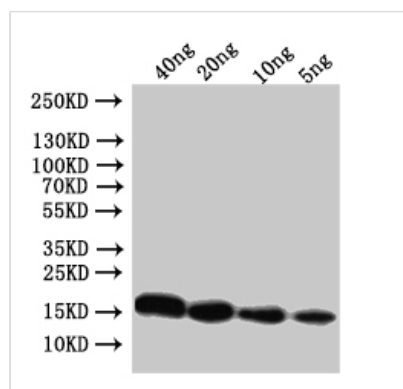




Conotoxin mr3e Antibody

| | |
|----------------------------|--|
| Product Code | CSB-PA691651ZA01DWD |
| Storage | Upon receipt, store at -20°C or -80°C. Avoid repeated freeze. |
| Uniprot No. | Q5EHP3 |
| Immunogen | Recombinant Conus marmoreus (Marble cone) Conotoxin mr3e protein (55-70aa) |
| Raised In | Rabbit |
| Species Reactivity | Conus marmoreus (Marble cone) |
| Tested Applications | ELISA, WB; Recommended dilution: WB:1:500-1:5000 |
| Form | Liquid |
| Conjugate | Non-conjugated |
| Storage Buffer | Preservative: 0.03% Proclin 300 Constituents: 50% Glycerol, 0.01M PBS, pH 7.4 |
| Purification Method | >95%, Protein G purified |
| Isotype | IgG |
| Clonality | Polyclonal |
| Product Type | Polyclonal Antibody |
| Immunogen Species | Conus marmoreus (Marble cone) |
| Target Names | Conotoxin mr3e Antibody |

Image



Western Blot

Positive WB detected in: recombinant protein

All lanes: Conotoxin mr3e Antibody at 1:1000

Secondary

Goat polyclonal to rabbit IgG at 1/50000 dilution

Predicted band size: 17 kDa

Observed band size: 17 kDa

Usage

For Research Use Only. Not for use in diagnostic or therapeutic procedures.