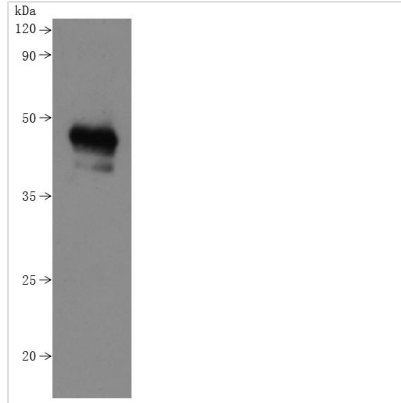


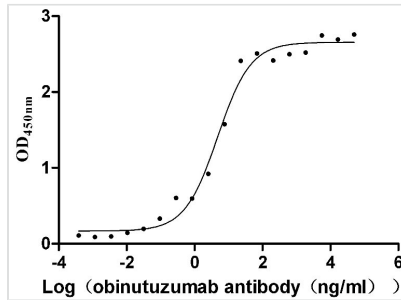


# Recombinant Human B-lymphocyte antigen CD20 (MS4A1)-VLPs (Active)

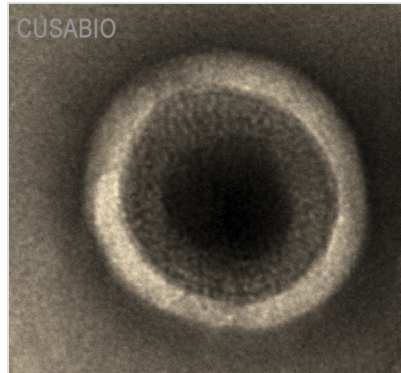
<b>Product Code</b>	CSB-MP015007HU
<b>Abbreviation</b>	Recombinant Human MS4A1 protein-VLPs (Active)
<b>Storage</b>	The shelf life is related to many factors, storage state, buffer ingredients, storage temperature and the stability of the protein itself. Generally, the shelf life of liquid form is 6 months at -20°C/-80°C. The shelf life of lyophilized form is 12 months at -20°C/-80°C.
<b>Uniprot No.</b>	P11836
<b>Form</b>	Lyophilized powder
<b>Storage Buffer</b>	Lyophilized from a 0.2 µm sterile filtered PBS, 6% Trehalose, pH 7.4
<b>Product Type</b>	Recombinant Protein
<b>Immunogen Species</b>	Homo sapiens (Human)
<b>Biological Activity</b>	Measured by its binding ability in a functional ELISA. Immobilized human CD20 at 2 µg/mL can bind Anti-CD20 recombinant antibody (CSB-RA015007A1HU), the EC <sub>50</sub> is 3.243-7.085 ng/mL.
<b>Purity</b>	Greater than 90% as determined by SEC-HPLC.
<b>Sequence</b>	MTTPRNSVNGTFPAEPMKGP IAMQSGPKPLFRRMSSLVGPTQSFFMRESKTL GAVQIMNGLFHIALGGLLMIPAGIYAPICVTVWYPLWGGIMYIISGSLLAATEKNS RKCLVKGKMIMNSLSLFAAISGMILSIMDILNIKISHFLKMESLNFIRAHTPYINIYN CEPANPSEKNPSTQYCYSIQSLFLGILSVMLIFAFFQELVIAGIVENEWKRTCS RPKSNIVLLSAEEKKEQTIEIKEEVVGLTETSSQPKNEEDIEIPIQEEEEEEETETN FPEPPQDQESSPIENDSSP
<b>Research Area</b>	Cancer
<b>Source</b>	Mammalian cell
<b>Target Names</b>	MS4A1
<b>Expression Region</b>	1-297aa
<b>Notes</b>	Repeated freezing and thawing is not recommended. Store working aliquots at 4°C for up to one week.
<b>Tag Info</b>	C-terminal 10xHis-tagged (This tag can be tested only under denaturing conditions)
<b>Mol. Weight</b>	34.4 kDa
<b>Protein Length</b>	Full Length
<b>Image</b>	



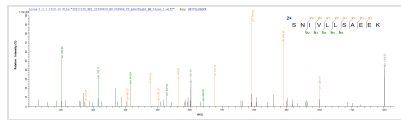
**Western Blot**  
CSB-MP015007HU is detected by Mouse anti-6\*His monoclonal antibody.



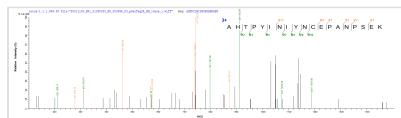
**Activity**  
Measured by its binding ability in a functional ELISA. Immobilized human CD20 at 2 µg/ml can bind Anti-CD20 recombinant antibody (CSB-RA015007A1HU), the EC<sub>50</sub> is 3.243-7.085 ng/mL.



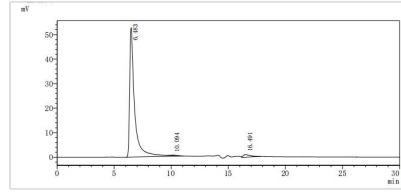
The presence of VLP-like structures was confirmed by TEM



Based on the SEQUEST from database of Mammalian Cell host and target protein, the LC-MS/MS Analysis result of CSB-MP015007HU could indicate that this peptide derived from Mammalian Cell-expressed Homo sapiens (Human) CD20.



Based on the SEQUEST from database of Mammalian Cell host and target protein, the LC-MS/MS Analysis result of CSB-MP015007HU could indicate that this peptide derived from Mammalian Cell-expressed Homo sapiens (Human) CD20.



The purity of VLPs was greater than 90% as determined by SEC-HPLC

---

**Endotoxin**

Less than 1.0 EU/ug as determined by LAL method.

---

**Shelf Life**

The shelf life is related to many factors, storage state, buffer ingredients, storage temperature and the stability of the protein itself.

Generally, the shelf life of liquid form is 6 months at -20°C/-80°C. The shelf life of lyophilized form is 12 months at -20°C/-80°C.