



Recombinant Human Inactive tyrosine-protein kinase transmembrane receptor ROR1 (ROR1), partial (Active)

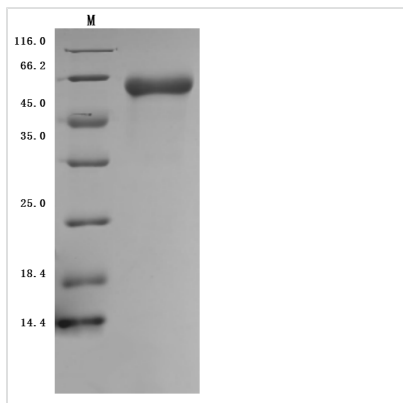
Product Code	CSB-MP020067HU1d7
Abbreviation	Recombinant Human ROR1 protein, partial (Active)
Storage	The shelf life is related to many factors, storage state, buffer ingredients, storage temperature and the stability of the protein itself. Generally, the shelf life of liquid form is 6 months at -20°C/-80°C. The shelf life of lyophilized form is 12 months at -20°C/-80°C.
Uniprot No.	Q01973
Form	Lyophilized powder
Storage Buffer	Lyophilized from a 0.2 µm filtered 20 mM Tris-HCl, 0.5 M NaCl, 6% Trehalose, pH 8.0
Product Type	Recombinant Protein
Immunogen Species	Homo sapiens (Human)
Biological Activity	Measured by its binding ability in a functional ELISA. Immobilized ROR1 at 2 µg/mL can bind anti-ROR1 antibody?CSB-RA020067A1HU?, the EC ₅₀ is 0.2450-0.3416 ng/mL.
Purity	Greater than 95% as determined by SDS-PAGE. Greater than 90% as determined by SEC-HPLC.
Sequence	QETELSVSAELVPTSSWNISSELNKDSYLTLDPEMNNITSLGQTAELHCKVSG NPPPTIRWFKNDAPVVQEPRRLSFRSTIYGSRLRIRNLDTTDTGYFQCVATNG KEVVSSTGVLFVKFGPPPTASPGYSDEYEEDGFCQPYRGIACARFIGNRTVYM ESLHMQGEIENQITAAFTMIGTSSHLSDKCSQFAIPSLCHYAFPYCDETSSVPK PRDLCRDECEILENVLCQTEYIFARSNPMLMRLKLPNCEDLPQPESPEAANCI RIGIPMADPINKNHKCYNSTGVDYRGTVSVTKSGRQCQPWNSQYPHTHTFTA LRFPELNGGHSYCRNPGNQKEAPWCFTLDENFKSDLCDIPACDSKDSKEKNK ME
Research Area	Neuroscience
Source	Mammalian cell
Target Names	ROR1
Expression Region	30-403aa
Notes	Repeated freezing and thawing is not recommended. Store working aliquots at 4°C for up to one week.
Tag Info	C-terminal 10xHis-tagged
Mol. Weight	44.8 kDa



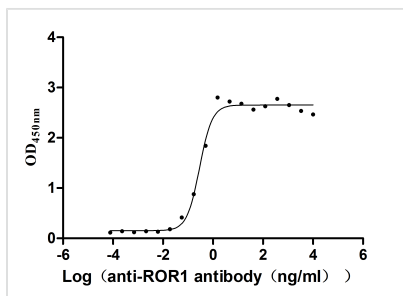
Protein Length

Partial

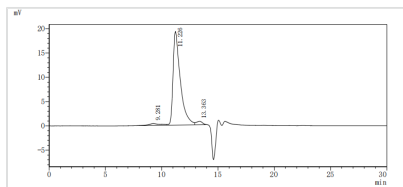
Image



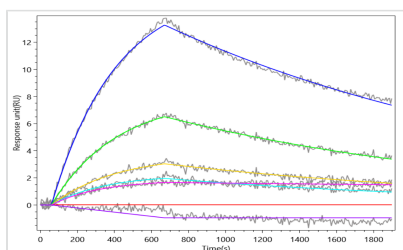
(Tris-Glycine gel) Discontinuous SDS-PAGE (reduced) with 5% enrichment gel and 15% separation gel.



Activity
Measured by its binding ability in a functional ELISA. Immobilized ROR1 at 2 µg/ml can bind anti-ROR1 antibody?CSB-RA020067A1HU?, the EC₅₀ is 0.2450-0.3416 ng/mL.



The purity of ROR1 was greater than 90% as determined by SEC-HPLC



ROR1 Recombinant Monoclonal Antibody (CSB-RA020067A1HU) captured on Protein A Chip can bind Recombinant Human ROR1 protein with an affinity constant of 0.305 nM as detected by MetaSPR Assay (WeSPRTM 200).

Endotoxin

Less than 1.0 EU/ug as determined by LAL method.

Reconstitution

We recommend that this vial be briefly centrifuged prior to opening to bring the contents to the bottom. Please reconstitute protein in deionized sterile water to a concentration of 0.1-1.0 mg/mL. We recommend to add 5-50% of glycerol (final concentration) and aliquot for long-term storage at -20°C/-80°C. Our default final concentration of glycerol is 50%. Customers could use it as reference.

Shelf Life

The shelf life is related to many factors, storage state, buffer ingredients, storage temperature and the stability of the protein itself. Generally, the shelf life of liquid form is 6 months at -20°C/-80°C. The shelf life of lyophilized form is 12 months at -20°C/-80°C.