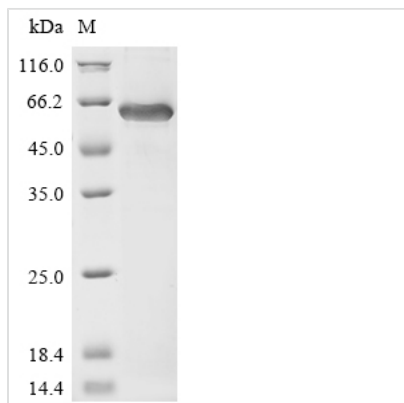




Recombinant Human Cartilage matrix protein (MATN1)

Product Code	CSB-EP013520HU
Abbreviation	Recombinant Human MATN1 protein
Storage	The shelf life is related to many factors, storage state, buffer ingredients, storage temperature and the stability of the protein itself. Generally, the shelf life of liquid form is 6 months at -20°C/-80°C. The shelf life of lyophilized form is 12 months at -20°C/-80°C.
Uniprot No.	P21941
Form	Liquid or Lyophilized powder
Storage Buffer	If the delivery form is liquid, the default storage buffer is Tris/PBS-based buffer, 5%-50% glycerol. If the delivery form is lyophilized powder, the buffer before lyophilization is Tris/PBS-based buffer, 6% Trehalose.
Product Type	Recombinant Protein
Immunogen Species	Homo sapiens (Human)
Purity	Greater than 85% as determined by SDS-PAGE.
Sequence	SPGLAPQSRGHLCTRPTDLVFVVDSSRSVRPVEFEKVKVFLSQVIESLDVGP NATRVGMVNYASTVKQEFSLRAHVSKAALLQAVRRIQPLSTGTMTGLAIQFAIT KAFGDAEGGRSRSPDISKVIVVTDGRPQDSVQDVSARARASGVELFAIGVGS VDKATLRQIASEPQDEHVDYVESYSVIEKLSRKFQEAFCVVS DLCATGDHDCE QVCISSPGSYTCACHEGFTLNSDGKTCNVCSGGGGSSATDLVFLIDGSKSVRP ENFELVKKFISQIVDTLDVSDKLAQVGLVQYSSSVRQEFPLGRFHTKKDIKAAV RNMSYMEKGTMTGAALKYLIDNSFTVSSGARPGAQKVGIVFTDGRSQDYINDA AKKAKDLGFKMFAVGVGNAVEDELREIASEPVAEHYFYTADFKTINQIGKKLQK KICVEEDPCACESLVKFQAKVEGLLQALTRKLEAVSKRLAILENTVV
Research Area	Signal Transduction
Source	E.coli
Target Names	MATN1
Expression Region	23-496aa
Notes	Repeated freezing and thawing is not recommended. Store working aliquots at 4°C for up to one week.
Tag Info	N-terminal 6xHis-tagged
Mol. Weight	57.3 kDa
Protein Length	Full Length of Mature Protein
Image	



(Tris-Glycine gel) Discontinuous SDS-PAGE (reduced) with 5% enrichment gel and 15% separation gel.

Reconstitution

We recommend that this vial be briefly centrifuged prior to opening to bring the contents to the bottom. Please reconstitute protein in deionized sterile water to a concentration of 0.1-1.0 mg/mL. We recommend to add 5-50% of glycerol (final concentration) and aliquot for long-term storage at -20°C/-80°C. Our default final concentration of glycerol is 50%. Customers could use it as reference.

Shelf Life

The shelf life is related to many factors, storage state, buffer ingredients, storage temperature and the stability of the protein itself. Generally, the shelf life of liquid form is 6 months at -20°C/-80°C. The shelf life of lyophilized form is 12 months at -20°C/-80°C.