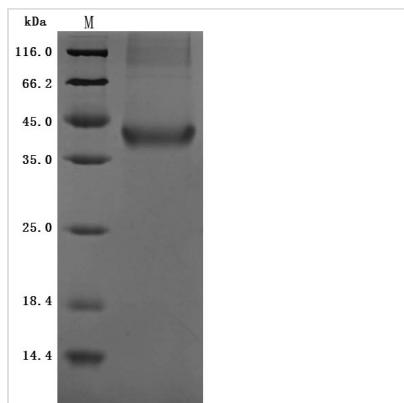


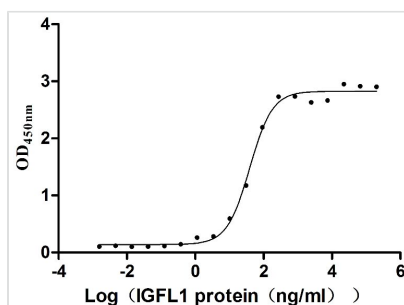


Recombinant Human Insulin growth factor-like family member 1 (IGFL1) (Active)

Product Code	CSB-MP764932HU
Abbreviation	Recombinant Human IGFL1 protein (Active)
Storage	The shelf life is related to many factors, storage state, buffer ingredients, storage temperature and the stability of the protein itself. Generally, the shelf life of liquid form is 6 months at -20°C/-80°C. The shelf life of lyophilized form is 12 months at -20°C/-80°C.
Uniprot No.	Q6UW32
Form	Lyophilized powder
Storage Buffer	Lyophilized from a 0.2 µm filtered PBS, 6% Trehalose, pH 7.4
Product Type	Recombinant Protein
Immunogen Species	Homo sapiens (Human)
Biological Activity	Measured by its binding ability in a functional ELISA. Immobilized Human IGFLR1 (CSB-MP862025HU) at 2 µg/mL can bind Human IGFL1, the EC ₅₀ is 32.33-47.52 ng/mL.
Purity	≥ 95% as determined by SDS-PAGE.
Sequence	APVAPMTPYLMLCQPHKRCGDKFYDPLQHCCYDDAVVPLARTQTCGNCTFR VCFEQCCPWTFFMVKLINQNCDSARTSDDRLCRSVS
Research Area	other
Source	Mammalian cell
Target Names	IGFL1
Expression Region	25-110aa
Notes	Repeated freezing and thawing is not recommended. Store working aliquots at 4°C for up to one week.
Tag Info	C-terminal hFc1-tagged
Mol. Weight	38.7 kDa
Protein Length	Full Length of Mature Protein
Image	



(Tris-Glycine gel) Discontinuous SDS-PAGE (reduced) with 5% enrichment gel and 15% separation gel.



Activity
Measured by its binding ability in a functional ELISA. Immobilized Human IGFLR1 (CSB-MP862025HU) at 2 µg/ml can bind Human IGFL1, the EC₅₀ is 32.33-47.52 ng/mL.

Endotoxin

Less than 1.0 EU/ug as determined by LAL method.

Reconstitution

We recommend that this vial be briefly centrifuged prior to opening to bring the contents to the bottom. Please reconstitute protein in deionized sterile water to a concentration of 0.1-1.0 mg/mL. We recommend to add 5-50% of glycerol (final concentration) and aliquot for long-term storage at -20°C/-80°C. Our default final concentration of glycerol is 50%. Customers could use it as reference.

Shelf Life

The shelf life is related to many factors, storage state, buffer ingredients, storage temperature and the stability of the protein itself. Generally, the shelf life of liquid form is 6 months at -20°C/-80°C. The shelf life of lyophilized form is 12 months at -20°C/-80°C.