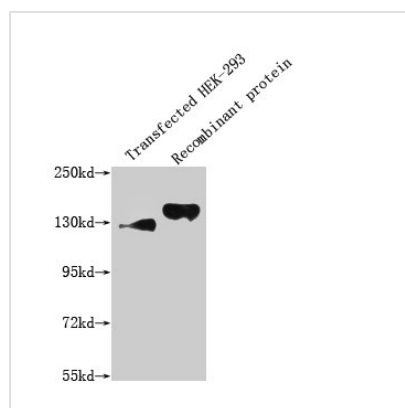




SEMA4D Monoclonal Antibody

Product Code	CSB-MA835707A0m
Storage	Upon receipt, store at -20°C or -80°C. Avoid repeated freeze.
Uniprot No.	Q92854
Immunogen	Recombinant Human SEMA4D protein(22-734aa)
Raised In	Mouse
Species Reactivity	Human
Tested Applications	ELISA, WB, FC; Recommended dilution: WB: 1:1000-1:5000, FC:1:50-1:200
Form	Liquid
Conjugate	Non-conjugated
Storage Buffer	Preservative: 0.03% Proclin 300 Constituents: 50% Glycerol, 0.01M PBS, PH 7.4
Purification Method	>95%, Protein G purified
Isotype	IgG2b
Clonality	Monoclonal
Product Type	Monoclonal Antibody
Immunogen Species	Homo sapiens (Human)
Gene Names	SEMA4D
Clone No.	10E12E10

Image



Western Blot

Positive WB detected in: 293T whole cell lysate transfected with SEMA4D; Recombinant proteins with SEMA4D

All lanes: SEMA4D antibody at 1:1000

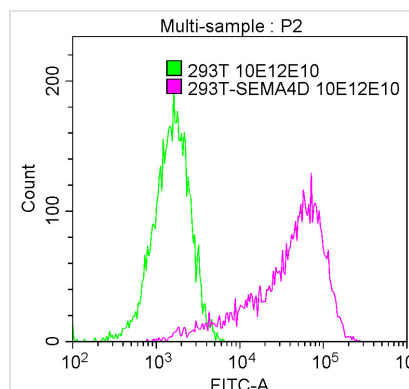
Secondary

Goat polyclonal to mouse IgG at 1/50000 dilution

Predicted band size: 130, 150 KDa

Observed band size: 130, 150 KDa

Exposure time?5min



Overlay Peak curve showing 293T whole cell lysate transfected with SEMA4D stained with CSB-MA835707A0m (red line) at 1:100. The cells were incubated in 10% normal goat serum to block non-specific protein-protein interactions followed by the antibody (1 μ g/1*10⁶cells) for 1h at 4°C. The secondary antibody used was FITC-conjugated Goat Anti-Mouse IgG(H+L) at 1/100 dilution for 30min at 4°C. Isotype control antibody (green line) was mouse IgG1 (1 μ g/1*10⁶cells) used under the same conditions. Acquisition of >10,000 events was performed.