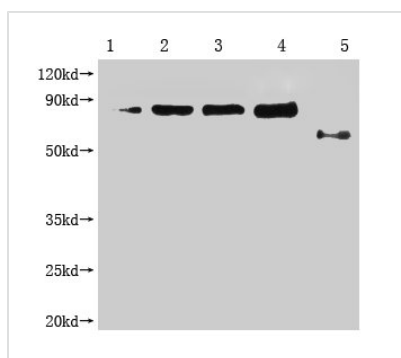




Enterobacteria phage M13 III Monoclonal Antibody

Product Code	CSB-MA303116A1m
Storage	Upon receipt, store at -20°C or -80°C. Avoid repeated freeze.
Uniprot No.	P69168
Immunogen	Recombinant Enterobacteria phage M13 Attachment protein (19-424AA)
Raised In	Mouse
Species Reactivity	Enterobacteria phage M13
Tested Applications	ELISA, WB; Recommended dilution: WB: 1:1000-1:5000
Form	Liquid
Conjugate	Non-conjugated
Storage Buffer	Preservative: 0.03% Proclin 300 Constituents: 50% Glycerol, 0.01M PBS, PH 7.4
Purification Method	>95%, Protein G purified
Isotype	IgG1
Clonality	Monoclonal
Product Type	Monoclonal Antibody
Immunogen Species	Enterobacteria phage M13
Gene Names	III
Clone No.	4B1D7

Image



Western Blot

Positive WB detected in: 1-4 lanes: Recombinant Enterobacteria phage M13 Attachment protein at 2.5ng, 5ng, 10ng, 20ng; 5 lane: Enterobacteria phage M13 Attachment

All lanes: Enterobacteria phage M13 III antibody at 1:1000

Secondary

Goat polyclonal to mouse IgG at 1/50000 dilution

Predicted band size: 65, 55-70 KDa

Observed band size: 65, 55-70 KDa

Exposure time?3min