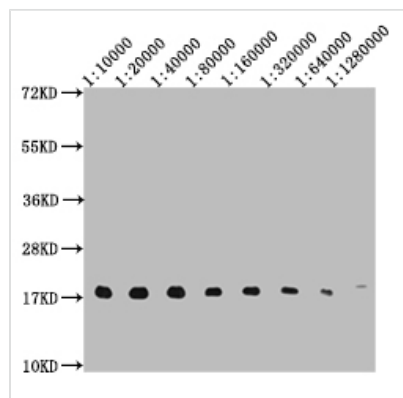




HistoneH3 Monoclonal Antibody

Product Code	CSB-MA010418A0m
Storage	Upon receipt, store at -20°C or -80°C. Avoid repeated freeze.
Uniprot No.	P68431
Immunogen	KDIQLARRIRGERA synthetic peptide conjugate to KLH
Raised In	Mouse
Species Reactivity	Human, Rat, Rabbit, Mouse
Specificity	ELISA, WB, IHC, IP; Recommended dilution: WB:1:5000-1:640000, IHC: 1:100-1:200, IP:2µl-5µl
Form	Liquid
Conjugate	Non-conjugated
Storage Buffer	Preservative: 0.03% Proclin 300 Constituents: 50% Glycerol, 0.01M PBS, PH 7.4
Purification Method	>95%, Protein A purified
Isotype	IgG2b
Clonality	Monoclonal Antibody
Target Names	HIST1H3A
Clone No.	1G2E4

Image

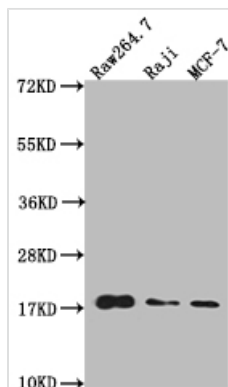


Western Blot

Positive WB detected in: 10ug Hela whole cell lysate, HistoneH3 antibody at 1:10000, 1:20000, 1:40000, 1:80000, 1:160000, 1:320000, 1:640000, 1:1280000

Secondary

Goat polyclonal to mouse IgG at 1/50000 dilution
Predicted band size: 15-25 KDa
Observed band size: 15-25 KDa
Exposure time?5s



Western Blot

Positive WB detected in: Raw264.7 whole cell lysate, Raji whole cell lysate, MCF-7 whole cell lysate

All lanes: HistoneH3 antibody at 1:20000

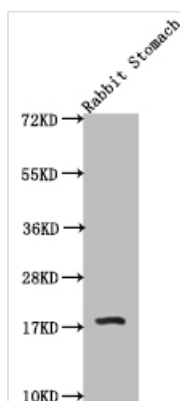
Secondary

Goat polyclonal to mouse IgG at 1/50000 dilution

Predicted band size: 15-25 KDa

Observed band size: 15-25 KDa

Exposure time: 1min



Western Blot

Positive WB detected in: Rabbit stomach tissue

All lanes: HistoneH3 antibody at 1:20000

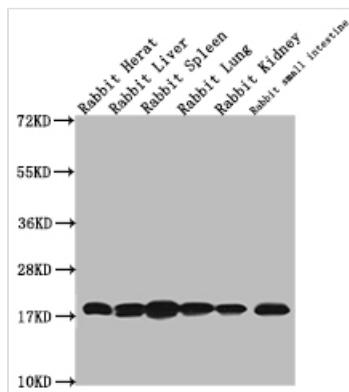
Secondary

Goat polyclonal to mouse IgG at 1/50000 dilution

Predicted band size: 15-25 KDa

Observed band size: 15-25 KDa

Exposure time: 1min



Western Blot

Positive WB detected in: Rabbit heart tissue, Rabbit liver tissue, Rabbit spleen tissue, Rabbit lung tissue, Rabbit kidney tissue, Rabbit small intestine tissue

All lanes: HistoneH3 antibody at 1:20000

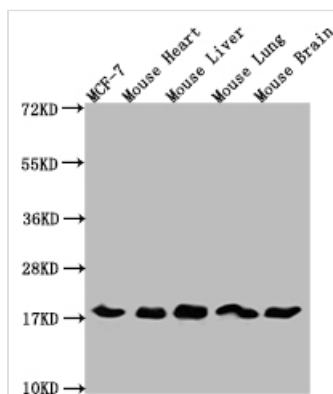
Secondary

Goat polyclonal to mouse IgG at 1/50000 dilution

Predicted band size: 15-25 KDa

Observed band size: 15-25 KDa

Exposure time: 2min



Western Blot

Positive WB detected in: MCF-7 whole cell lysate, Mouse heart tissue, Mouse liver tissue, Mouse lung tissue, Mouse brain tissue

All lanes: HistoneH3 antibody at 1:5000

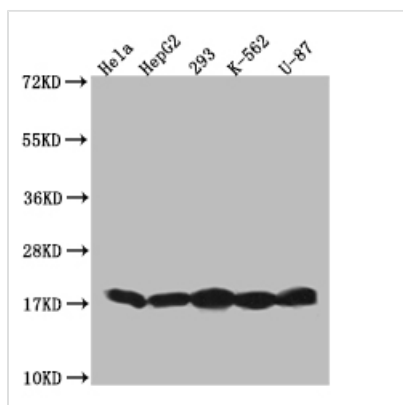
Secondary

Goat polyclonal to mouse IgG at 1/50000 dilution

Predicted band size: 15-25 KDa

Observed band size: 15-25 KDa

Exposure time: 5s



Western Blot

Positive WB detected in: HeLa whole cell lysate, HepG2 whole cell lysate, 293 whole cell lysate, K562 whole cell lysate, U87 whole cell lysate

All lanes: HistoneH3 antibody at 1:20000

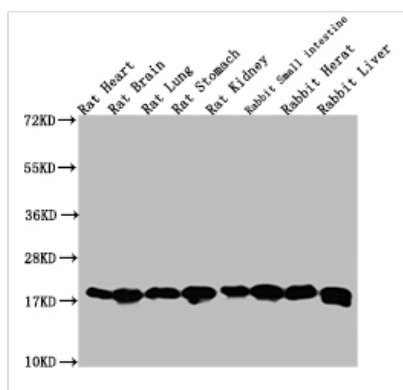
Secondary

Goat polyclonal to mouse IgG at 1/50000 dilution

Predicted band size: 15-25 KDa

Observed band size: 15-25 KDa

Exposure time: 2min



Western Blot

Positive WB detected in: Rat heart tissue, Rat brain tissue, Rat lung tissue, Rat stomach tissue, Rabbit small intestine tissue, Rabbit heart tissue, Rabbit liver tissue

All lanes: HistoneH3 antibody at 1:5000

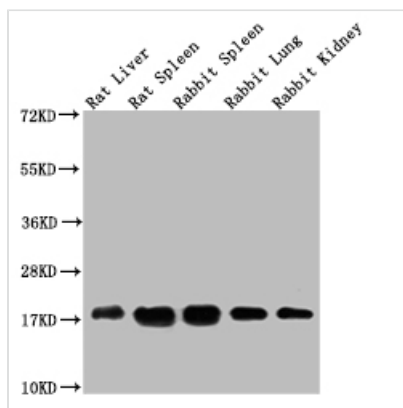
Secondary

Goat polyclonal to mouse IgG at 1/50000 dilution

Predicted band size: 15-25 KDa

Observed band size: 15-25 KDa

Exposure time: 1min



Western Blot

Positive WB detected in: Rat liver tissue, Rat spleen tissue, Rabbit spleen tissue, Rabbit lung tissue, Rabbit kidney tissue

All lanes: HistoneH3 antibody at 1:5000

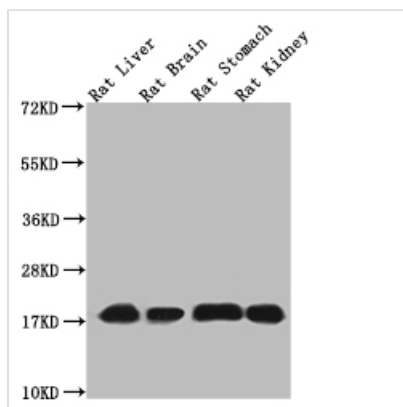
Secondary

Goat polyclonal to mouse IgG at 1/50000 dilution

Predicted band size: 15-25 KDa

Observed band size: 15-25 KDa

Exposure time: 5s



Western Blot

Positive WB detected in: Rat liver tissue, Rat brain tissue, Rat stomach tissue, Rat kidney tissue

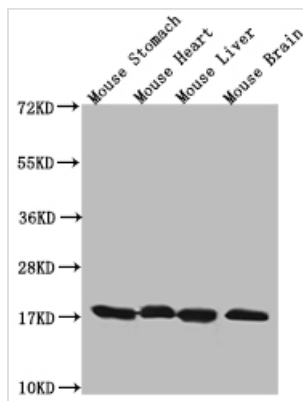
All lanes: HistoneH3 antibody at 1:5000

Secondary

Goat polyclonal to mouse IgG at 1/50000 dilution

Predicted band size: 15-25 KDa

Observed band size: 15-25 KDa



Western Blot

Positive WB detected in: Mouse stomach tissue, Mouse heart tissue, Mouse liver tissue, Mouse brain tissue

All lanes: HistoneH3 antibody at 1:20000

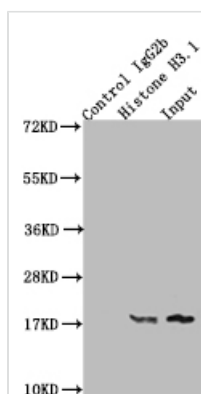
Secondary

Goat polyclonal to mouse IgG at 1/50000 dilution

Predicted band size: 15-25 KDa

Observed band size: 15-25 KDa

Exposure time: 2min



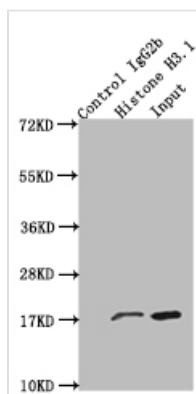
Immunoprecipitating HistoneH3 in K562 whole cell lysate

Lane 1: Mouse control IgG2b instead of CSB-MA010418A0m in Hela whole cell lysate.

Lane 2: CSB-MA010418A0m (2μg) + Hela whole cell lysate (500μg)

Lane 3: Hela whole cell lysate (20μg)

For western blotting, the blot was detected with CSB-MA010418A0m at 1:10000, and a HRP-conjugated Protein G antibody was used as the secondary antibody at 1:2000



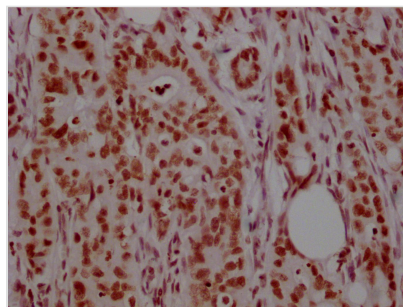
Immunoprecipitating HistoneH3 in Hela whole cell lysate

Lane 1: Mouse control IgG2b instead of CSB-MA010418A0m in Hela whole cell lysate.

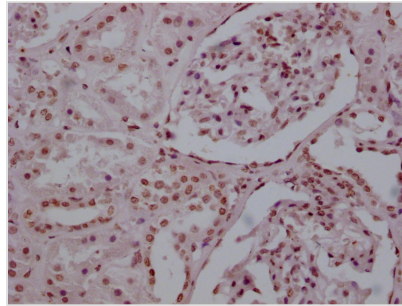
Lane 2: CSB-MA010418A0m (2μg) + Hela whole cell lysate (500μg)

Lane 3: Hela whole cell lysate (20μg)

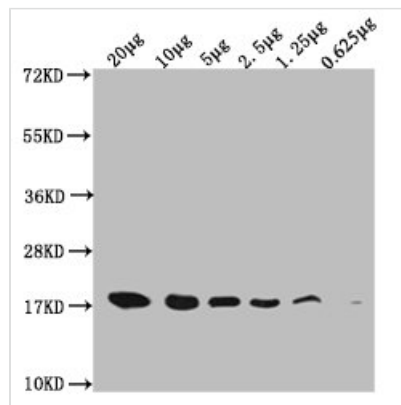
For western blotting, the blot was detected with CSB-MA010418A0m at 1:10000, and a HRP-conjugated Protein G antibody was used as the secondary antibody at 1:2000



IHC image of CSB-MA010418A0m diluted at 1:200 and staining in paraffin-embedded human colon cancer performed on a Leica BondTM system. After dewaxing and hydration, antigen retrieval was mediated by high pressure in a citrate buffer (pH 6.0). Section was blocked with 10% normal goat serum 30min at RT. Then primary antibody (1% BSA) was incubated at 4°C overnight. The primary is detected by a biotinylated secondary antibody and visualized using an HRP conjugated SP system.



IHC image of CSB-MA010418A0m diluted at 1:200 and staining in paraffin-embedded human kidney tissue performed on a Leica BondTM system. After dewaxing and hydration, antigen retrieval was mediated by high pressure in a citrate buffer (pH 6.0). Section was blocked with 10% normal goat serum 30min at RT. Then primary antibody (1% BSA) was incubated at 4°C overnight. The primary is detected by a biotinylated secondary antibody and visualized using an HRP conjugated SP system.



Western Blott

Positive WB detected in: Hela whole cell lysate at 20µg, 10µg, 5µg, 2.5µg, 1.25µg, 0.625µg

All lanes: HistoneH3 antibody at 1:5000

Secondary

Goat polyclonal to mouse IgG at 1/50000 dilution

Predicted band size: 15-25 KDa

Observed band size: 15-25 KDa

Exposure time: 5s