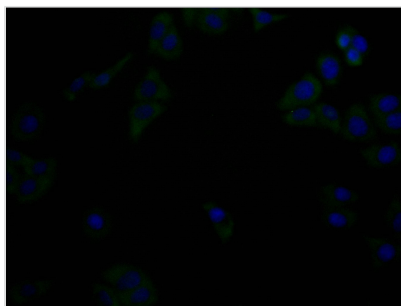




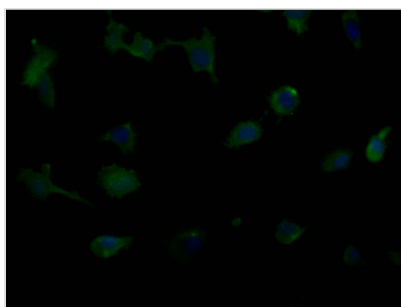
IFNLR1 Monoclonal Antibody

Product Code	CSB-MA816871A0m
Storage	Upon receipt, store at -20°C or -80°C. Avoid repeated freeze.
Uniprot No.	Q8IU57
Immunogen	Recombinant IFNLR1 protein (21-228AA)
Raised In	Mouse
Species Reactivity	Human
Specificity	No significant cross-reactivity or interference was observed
Tested Applications	ELISA, IF; Recommended dilution: IF: 1:50-1:200
Form	Liquid
Conjugate	Non-conjugated
Storage Buffer	Preservative: 0.03% Proclin 300 Constituents: 50% Glycerol, 0.01M PBS, PH 7.4
Purification Method	>95%, Protein A purified
Isotype	IgG2a
Clonality	Monoclonal
Product Type	Monoclonal Antibody
Immunogen Species	Homo sapiens (Human)
Target Names	IFNLR1
Clone No.	5G12F3

Image



Immunofluorescence staining of HeLa cells with CSB-MA816871A0m at 1:90, counter-stained with DAPI. The cells were fixed in 4% formaldehyde, permeabilized using 0.2% Triton X-100 and blocked in 10% normal Goat Serum. The cells were then incubated with the antibody overnight at 4°C. Nuclear DNA was labeled in blue with DAPI. The secondary antibody was FITC-conjugated AffiniPure Goat Anti-Mouse IgG (H+L).



Immunofluorescence staining of U251 cells with CSB-MA816871A0m at 1:90, counter-stained with DAPI. The cells were fixed in 4% formaldehyde, permeabilized using 0.2% Triton X-100 and blocked in 10% normal Goat Serum. The cells were then incubated with the antibody overnight at 4°C. Nuclear DNA was labeled in blue with DAPI. The secondary antibody was FITC-conjugated AffiniPure Goat Anti-Mouse IgG (H+L).



Usage

For Research Use Only. Not for use in diagnostic or therapeutic procedures.