

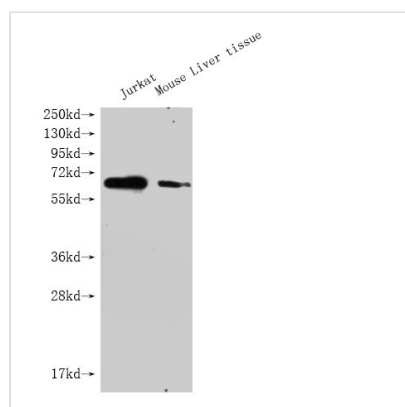


GPC3 Monoclonal Antibody

Product Code	CSB-MA009705A0m
Storage	Upon receipt, store at -20°C or -80°C. Avoid repeated freeze.
Uniprot No.	P51654
Immunogen	Recombinant Human Glypican-3 protein (25-559AA)
Raised In	Mouse
Species Reactivity	Human
Tested Applications	ELISA, WB, FC; Recommended dilution: WB: 1:1000-1:5000, FC:1:50-1:200
Relevance	Cell surface proteoglycan that bears heparan sulfate (PubMed:14610063). Negatively regulates the hedgehog signaling pathway when attached via the GPI-anchor to the cell surface by competing with the hedgehog receptor PTC1 for binding to hedgehog proteins (By similarity). Binding to the hedgehog protein SHH triggers internalization of the complex by endocytosis and its subsequent lysosomal degradation (By similarity). Positively regulates the canonical Wnt signaling pathway by binding to the Wnt receptor Frizzled and stimulating the binding of the Frizzled receptor to Wnt ligands (PubMed:16227623, PubMed:24496449). Positively regulates the non-canonical Wnt signaling pathway (By similarity). Binds to CD81 which decreases the availability of free CD81 for binding to the transcriptional repressor HHEX, resulting in nuclear translocation of HHEX and transcriptional repression (By similarity). Inhibits the dipeptidyl peptidase activity of DPP4 (PubMed:17549790). Plays a role in limb patterning and skeletal development by controlling the cellular response to BMP4 (By similarity). Modulates the effects of growth factors BMP2, BMP7 and FGF7 on renal branching morphogenesis (By similarity). Required for coronary vascular development (By similarity). Plays a role in regulating cell movements during gastrulation (By similarity).
Form	Liquid
Conjugate	Non-conjugated
Storage Buffer	Preservative: 0.03% Proclin 300 Constituents: 50% Glycerol, 0.01M PBS, PH 7.4
Purification Method	>95%, Protein A purified
Isotype	IgG2a
Clonality	Monoclonal
Product Type	Monoclonal Antibody
Immunogen Species	Homo sapiens (Human)
Research Area	Neuroscience?Cancer;Signal transduction?Stem cells
Gene Names	GPC3
Clone No.	6F1B5



Image



Western Blot

Positive WB detected in: GPC3 antibody at 1:1000

Lane 1: Jurkat whole cell lysate

Lane 2: Mouse liver tissue

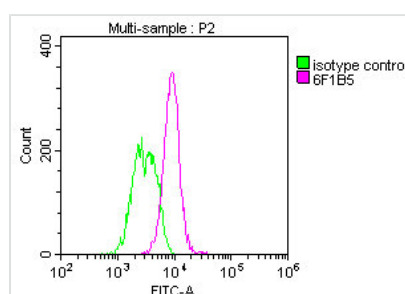
Secondary

Goat polyclonal to Mouse IgG at 1/20000 dilution

Predicted band size: 65-70KDa

Observed band size: 65-70 KDa

Exposure time: 5min



Overlay Peak curve showing Jurkat cells stained with CSB-MA009705A0m (red line) at 1:100. The cells were incubated in 10% normal goat serum to block non-specific protein-protein interactions followed by the antibody (1 μ g/1*10⁶cells) for 1h at 4°C. The secondary antibody used was FITC-conjugated Goat Anti-Mouse IgG(H+L) at 1/100 dilution for 30min at 4°C. Isotype control antibody (green line) was mouse IgG1 (1 μ g/1*10⁶cells) used under the same conditions. Acquisition of >10,000 events was performed.