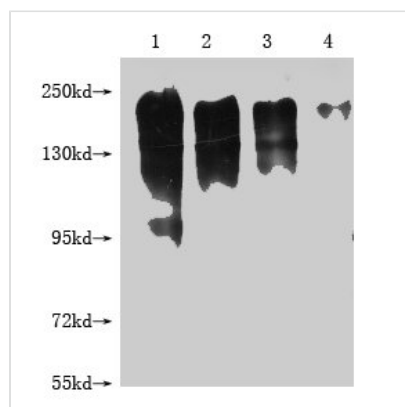




MERTK Monoclonal Antibody

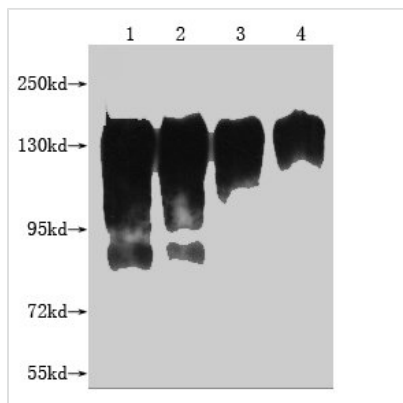
Product Code	CSB-MA621519A0m
Storage	Upon receipt, store at -20°C or -80°C. Avoid repeated freeze.
Uniprot No.	Q12866
Immunogen	Recombinant MERTK protein (21-505AA)
Raised In	Mouse
Species Reactivity	Human
Specificity	No significant cross-reactivity or interference was observed
Tested Applications	ELISA, WB, IHC, IF, FC; Recommended dilution: WB:1:1000-1:5000, IHC:1:50-1:200, IF:1:50-1:200, FC:1:50-1:200
Form	Liquid
Conjugate	Non-conjugated
Storage Buffer	Preservative: 0.03% Proclin 300 Constituents: 50% Glycerol, 0.01M PBS, PH 7.4
Purification Method	>95%, Protein A purified
Isotype	IgG2b
Clonality	Monoclonal
Product Type	Monoclonal Antibody
Immunogen Species	Homo sapiens (Human)
Target Names	MERTK
Clone No.	16D1

Image



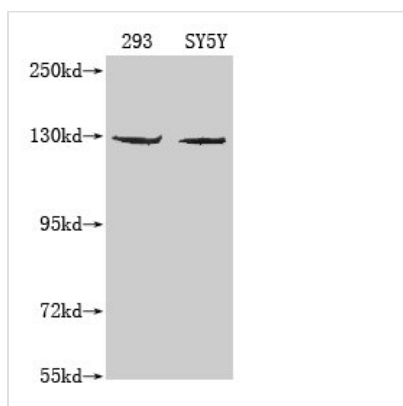
Western Blot

Positive WB detected in: 1-4 lanes: 293T whole cell lysate transfected with MERTK at 10ug, 5ug, 2.5ug, 1.25ug
 All lanes: MERTK antibody at 1:2000
 Secondary
 Goat polyclonal to mouse IgG at 1/50000 dilution
 Predicted band size: 150-250 KDa
 Observed band size: 150-250 KDa
 Exposure time: 5S



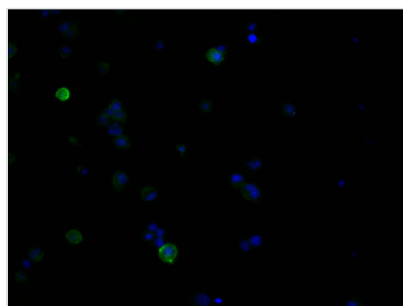
Western Blot

Positive WB detected in: 1-4 lanes: Recombinant MERTK protein at 20ng, 10ng, 5ng, 2.5ng
 All lanes: MERTK antibody at 1:2000
 Secondary
 Goat polyclonal to mouse IgG at 1/50000 dilution
 Predicted band size: 120 KDa
 Observed band size: 120-150 KDa
 Exposure time?5S

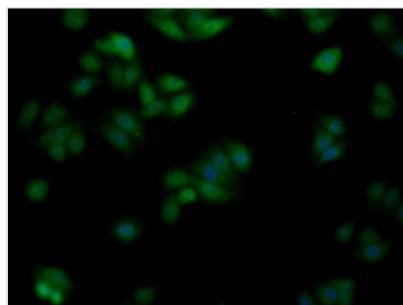


Western Blot

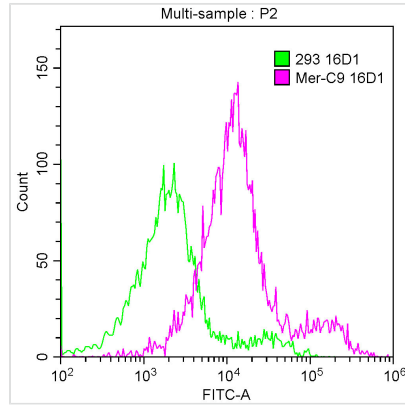
Positive WB detected in: 293 whole cell lysate, SY5Y whole cell lysate, K562 whole cell lysate
 All lanes: MERTK antibody at 1:1000
 Secondary
 Goat polyclonal to mouse IgG at 1/50000 dilution
 Predicted band size: 110 kDa
 Observed band size: 130 KDa
 Exposure time?5min



Immunofluorescence staining of 293T transfected cells with MERTK CSB-MA621519A0m at 1:100, counter-stained with DAPI. The cells were fixed in 4% formaldehyde and blocked in 10% normal Goat Serum. The cells were incubated with the antibody overnight at 4°C. Nuclear DNA was labeled in blue with DAPI. The secondary antibody was FITC-conjugated AffiniPure Goat Anti-Mouse IgG (H+L).



Immunofluorescence staining of HepG2 cells with MERTK CSB-MA621519A0m at 1:100, counter-stained with DAPI. The cells were fixed in 4% formaldehyde and blocked in 10% normal Goat Serum. The cells were incubated with the antibody overnight at 4°C. Nuclear DNA was labeled in blue with DAPI. The secondary antibody was FITC-conjugated AffiniPure Goat Anti-Mouse IgG (H+L).



Overlay Peak curve showing 293T transfected cells stained with CSB-MA621519A0m (red line) at 1:100. The cells were incubated in 10% normal goat serum to block non-specific protein-protein interactions followed by the antibody (1µg/1*10⁶cells) for 1h at 4°C. The secondary antibody used was FITC-conjugated Goat Anti-Mouse IgG(H+L) at 1/100 dilution for 30min at 4°C. Isotype control antibody (green line) was mouse IgG1 (1µg/1*10⁶cells) used under the same conditions. Acquisition of >10,000 events was performed.

Usage

For Research Use Only. Not for use in diagnostic or therapeutic procedures.