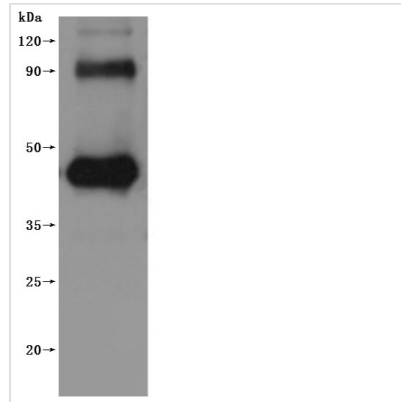


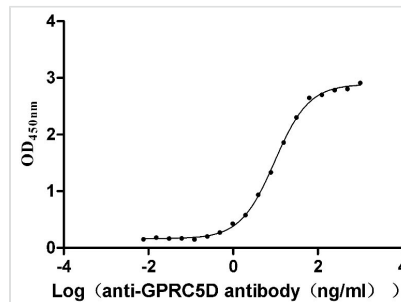


Recombinant Human G-protein coupled receptor family C group 5 member D (GPRC5D)-VLPs (Active)

Product Code	CSB-MP882153HU
Abbreviation	Recombinant Human GPRC5D protein-VLPs (Active)
Storage	The shelf life is related to many factors, storage state, buffer ingredients, storage temperature and the stability of the protein itself. Generally, the shelf life of liquid form is 6 months at -20°C/-80°C. The shelf life of lyophilized form is 12 months at -20°C/-80°C.
Uniprot No.	Q9NZD1
Form	Lyophilized powder
Storage Buffer	Lyophilized from a 0.2 µm filtered PBS, 6% Trehalose, pH 7.4
Product Type	Recombinant Protein
Immunogen Species	Homo sapiens (Human)
Biological Activity	Measured by its binding ability in a functional ELISA. Immobilized Human GPRC5D at 5 µg/mL can bind Anti-GPRC5D recombinant antibody (CSB-RA882153MA01HU), the EC ₅₀ is 8.847-10.38 ng/mL.
Sequence	MYKDCIESTGDYFLLCDAEGPWGIILESLAILGIVVTILLLLAFLFLMRKIQDCSQ WNVLPQTLLFLLSVLGLFGLAFAFIIELNQQTAPVRYFLFGVLFALCFSCLLAHA SNLVKLVRGCVSFSWTTILCIAIGCSLLQIIATEYVTLIMTRGMMFVNMTPCQLN VDFVLLVYVFLMALTFVSKATFCGPCENWKQHGRILFITVLFSSIIWVWVISM LLRGNPQFQRQPQWDDPVVCIALVTNAWVFLLLYIVPELCILYRSCRQECPLQ GNACPVTAHQHSFQVENQELSRARDSGDGAEEEDVALTSYGTPIQPQTVDPDPTQE CFIPQAKLSPQQDAGGV
Source	Mammalian cell
Target Names	GPRC5D
Expression Region	1-345aa
Notes	Repeated freezing and thawing is not recommended. Store working aliquots at 4°C for up to one week.
Tag Info	C-terminal 10xHis-tagged (This tag can be tested only under denaturing conditions)
Mol. Weight	40.6 kDa
Protein Length	Full Length
Image	



CSB-MP882153HU is detected by Mouse anti-6*His monoclonal antibody.



Activity
 Measured by its binding ability in a functional ELISA. Immobilized Human GPRC5D at 5 µg/mL can bind Anti-GPRC5D recombinant antibody (CSB-RA882153MA01HU), the EC₅₀ is 8.847-10.38 ng/mL.

Endotoxin

Less than 1.0 EU/ug as determined by LAL method.

Reconstitution

We recommend that this vial be briefly centrifuged prior to opening to bring the contents to the bottom. Please reconstitute protein in deionized sterile water to a concentration of 0.1-1.0 mg/mL. We recommend to add 5-50% of glycerol (final concentration) and aliquot for long-term storage at -20°C/-80°C. Our default final concentration of glycerol is 50%. Customers could use it as reference.

Shelf Life

The shelf life is related to many factors, storage state, buffer ingredients, storage temperature and the stability of the protein itself. Generally, the shelf life of liquid form is 6 months at -20°C/-80°C. The shelf life of lyophilized form is 12 months at -20°C/-80°C.