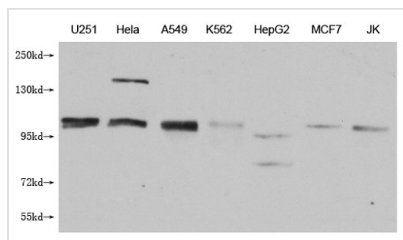




# MBTPS1 Monoclonal Antibody

<b>Product Code</b>	CSB-MA617930A0m
<b>Storage</b>	Upon receipt, store at -20°C or -80°C. Avoid repeated freeze.
<b>Uniprot No.</b>	Q14703
<b>Immunogen</b>	Recombinant Human Membrane-bound transcription factor site-1 protease protein (187-400aa)
<b>Raised In</b>	Mouse
<b>Species Reactivity</b>	Human
<b>Tested Applications</b>	ELISA, WB, FC; Recommended dilution: WB: 1:1000-1:5000, FC:1:50-1:200
<b>Relevance</b>	Serine protease that catalyzes the first step in the proteolytic activation of the sterol regulatory element-binding proteins (SREBPs). Other known substrates are BDNF, GNPTAB and ATF6. Cleaves after hydrophobic or small residues, provided that Arg or Lys is in position P4. Cleaves known substrates after Arg-Ser-Val-Leu (SERBP-2), Arg-His-Leu-Leu (ATF6), Arg-Gly-Leu-Thr (BDNF) and its own propeptide after Arg-Arg-Leu-Leu. Mediates the protein cleavage of GNPTAB into subunit alpha and beta, thereby participating in biogenesis of lysosomes.
<b>Form</b>	Liquid
<b>Conjugate</b>	Non-conjugated
<b>Storage Buffer</b>	Preservative: 0.03% Proclin 300 Constituents: 50% Glycerol, 0.01M PBS, pH 7.4
<b>Purification Method</b>	>95%, Protein G purified
<b>Clonality</b>	Monoclonal Antibody
<b>Product Type</b>	Monoclonal Antibody
<b>Immunogen Species</b>	Homo sapiens (Human)
<b>Research Area</b>	Epigenetics and Nuclear Signaling
<b>Target Names</b>	MBTPS1
<b>Clone No.</b>	2F10E12

## Image

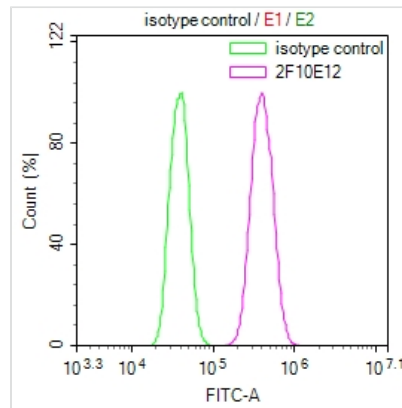


### Western Blot

Positive WB detected in: U251 whole cell lysate, HeLa whole cell lysate, A549 whole cell lysate, K562 whole cell lysate, HepG2 whole cell lysate, MCF-7 whole cell lysate, Jurkat whole cell lysate  
All lanes: MBTPS1 antibody at 1:1000

### Secondary

Goat polyclonal to mouse IgG at 1/50000 dilution  
Predicted band size: 117 kDa  
Observed band size: 117 KDa  
Exposure time?5min



Overlay Peak curve showing Hela cells stained with CSB-MA617930A0m (red line) at 1:100. The cells were incubated in 10% normal goat serum to block non-specific protein-protein interactions followed by the antibody (1µg/1\*10<sup>6</sup>cells) for 1h at 4°C. The secondary antibody used was FITC-conjugated Goat Anti-Mouse IgG(H+L) at 1/100 dilution for 30min at 4°C. Isotype control antibody (green line) was mouse IgG1 (1µg/1\*10<sup>6</sup>cells) used under the same conditions. Acquisition of >10,000 events was performed.

## Usage

For Research Use Only. Not for use in diagnostic or therapeutic procedures.