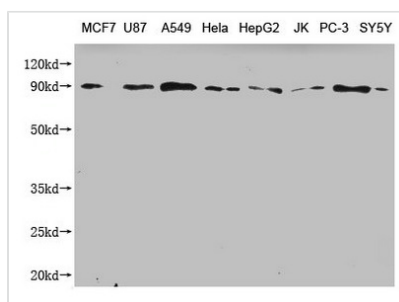




CANX Monoclonal Antibody

Product Code	CSB-MA004485A0m
Storage	Upon receipt, store at -20°C or -80°C. Avoid repeated freeze.
Uniprot No.	P27824
Immunogen	Recombinant Human Calnexin protein (1-482AA)
Raised In	Mouse
Species Reactivity	Human
Specificity	No significant cross-reactivity or interference was observed
Tested Applications	ELISA, WB, FC; Recommended dilution: WB?1:1000-1:5000, FC:1:50-1:200
Form	Liquid
Conjugate	Non-conjugated
Storage Buffer	Preservative: 0.03% Proclin 300 Constituents: 50% Glycerol, 0.01M PBS, PH 7.4
Purification Method	>95%, Protein G purified
Isotype	IgG2a
Clonality	Monoclonal
Product Type	Monoclonal Antibody
Immunogen Species	Homo sapiens (Human)
Gene Names	CANX
Clone No.	4G3H3

Image



Western Blot

Positive WB detected in: MCF7 whole cell lysate, U87 whole cell lysate, A549 whole cell lysate, HeLa whole cell lysate, HepG2 whole cell lysate, JK whole cell lysate, PC-3 whole cell lysate, SY5Y whole cell lysate

All lanes: CANX antibody at 1:2000

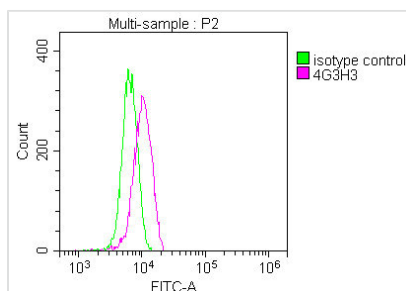
Secondary

Goat polyclonal to mouse IgG at 1/50000 dilution

Predicted band size: 68, 72, 56 kDa

Observed band size: 90 kDa

Exposure time?5min



Overlay Peak curve showing Hela cells stained with CSB-MA004485A0m (red line) at 1:80. The cells were incubated in 10% normal goat serum to block non-specific protein-protein interactions followed by the antibody ($1\mu\text{g}/1 \times 10^6$ cells) for 1h at 4°C . The secondary antibody used was FITC-conjugated Goat Anti-Mouse IgG(H+L) at 1/100 dilution for 30min at 4°C . Isotype control antibody (green line) was mouse IgG1 ($1\mu\text{g}/1 \times 10^6$ cells) used under the same conditions. Acquisition of $>10,000$ events was performed.