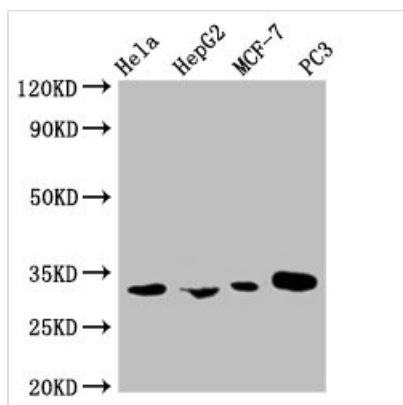




# AGBL2 Monoclonal Antibody

|                            |   |
|----------------------------|---|
| <b>Product Code</b>        | CSB-MA732978A0m   |
| <b>Storage</b>             | Upon receipt, store at -20°C or -80°C. Avoid repeated freeze.   |
| <b>Uniprot No.</b>         | Q5U5Z8  |
| <b>Immunogen</b>           | Recombinant Human Cytosolic carboxypeptidase 2 protein (10-270AA)   |
| <b>Raised In</b>           | Mouse   |
| <b>Species Reactivity</b>  | Human   |
| <b>Tested Applications</b> | ELISA, WB; Recommended dilution: WB:1:500-1:2000  |
| <b>Form</b>                | Liquid  |
| <b>Conjugate</b>           | Non-conjugated  |
| <b>Storage Buffer</b>      | Preservative: 0.03% Proclin 300<br>Constituents: 50% Glycerol, 0.01M PBS, PH 7.4  |
| <b>Purification Method</b> | Affinity purification   |
| <b>Isotype</b>             | IgG2b   |
| <b>Clonality</b>           | Monoclonal Antibody   |
| <b>Alias</b>               | AGBL 2 antibody; AGBL2 antibody; ATP/GTP binding protein like 2 antibody; ATP/GTP-binding protein-like 2 antibody; Carboxypeptidase 2 cytosolic antibody; CBPC2_HUMAN antibody; CCP2 antibody; Cytosolic carboxypeptidase 2 antibody; FLJ23598 antibody |
| <b>Product Type</b>        | Monoclonal Antibody   |
| <b>Immunogen Species</b>   | Homo sapiens (Human)  |
| <b>Target Names</b>        | AGBL2   |
| <b>Clone No.</b>           | 1F3C12  |

## Image



### Western Blot

Positive WB detected in: HeLa whole cell lysate, HepG2 whole cell lysate, MCF-7 whole cell lysate, PC-3 whole cell lysate

All lanes: AGBL2 antibody at 1:1000

Secondary

Goat polyclonal to mouse IgG at 1/50000 dilution

Predicted band size: 32 KDa

Observed band size: 32, 49, 104 KDa

Exposure time?5min

## Usage

For Research Use Only. Not for use in diagnostic or therapeutic procedures.