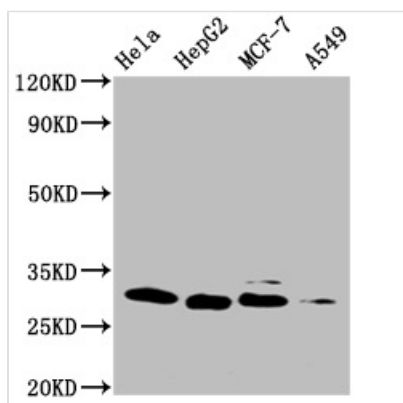




GSTM3 Monoclonal Antibody

Product Code	CSB-MA009982A0m
Storage	Upon receipt, store at -20°C or -80°C. Avoid repeated freeze.
Uniprot No.	P21266
Immunogen	Recombinant Human Glutathione S-transferase Mu 3 protein (1-225AA)
Raised In	Mouse
Species Reactivity	Human
Tested Applications	ELISA, WB, IHC, FC; Recommended dilution: WB: 1:1000-1:5000, IHC:1:50-1:200, FC:1:50-1:200
Form	Liquid
Conjugate	Non-conjugated
Storage Buffer	Preservative: 0.03% Proclin 300 Constituents: 50% Glycerol, 0.01M PBS, PH 7.4
Purification Method	>95%, Protein G purified
Isotype	IgG1
Clonality	Monoclonal Antibody
Product Type	Monoclonal Antibody
Immunogen Species	Homo sapiens (Human)
Target Names	GSTM3
Clone No.	1G1F1

Image



Western Blot

Positive WB detected in: HeLa whole cell lysate, HepG2 whole cell lysate, MCF-7 whole cell lysate, A549 whole cell lysate

All lanes: GSTM3 antibody at 1:1000

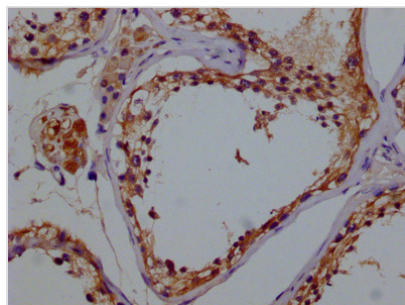
Secondary

Goat polyclonal to mouse IgG at 1/50000 dilution

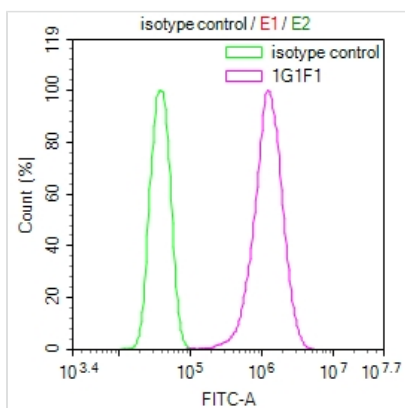
Predicted band size: 27 KDa

Observed band size: 27 KDa

Exposure time?10min



IHC image of CSB-MA009982A0m diluted at 1:100 and staining in paraffin-embedded human testes tissue performed on a Leica BondTM system. After dewaxing and hydration, antigen retrieval was mediated by high pressure in a citrate buffer (pH 6.0). Section was blocked with 10% normal goat serum 30min at RT. Then primary antibody (1% BSA) was incubated at 4°C overnight. The primary is detected by a biotinylated secondary antibody and visualized using an HRP conjugated SP system.



Overlay Peak curve showing Hela cells stained with CSB-MA009982A0m (red line) at 1:100. The cells were incubated in 10% normal goat serum to block non-specific protein-protein interactions followed by the antibody (1µg/1*10⁶cells) for 1h at 4°C. The secondary antibody used was FITC-conjugated Goat Anti-Mouse IgG(H+L) at 1/100 dilution for 30min at 4°C. Isotype control antibody (green line) was mouse IgG1 (1µg/1*10⁶cells) used under the same conditions. Acquisition of >10,000 events was performed.

Usage

For Research Use Only. Not for use in diagnostic or therapeutic procedures.