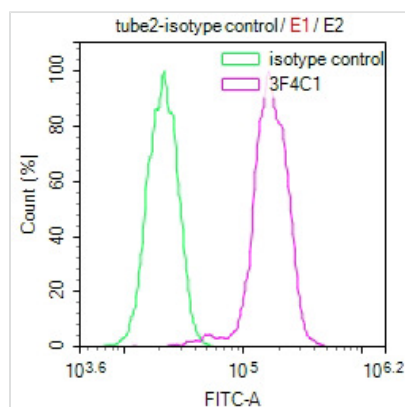




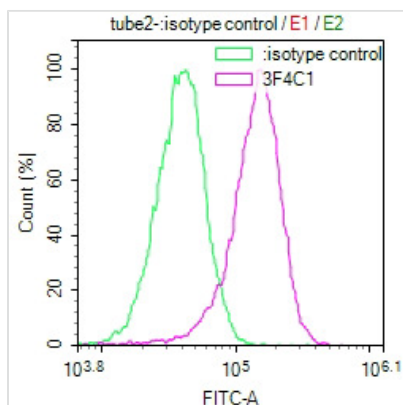
Phospho-Histone H3(Ser28) Monoclonal Antibody

Product Code	CSB-MA010418PA28ph01HU
Storage	Upon receipt, store at -20°C or -80°C. Avoid repeated freeze.
Uniprot No.	P68431
Raised In	Mouse
Species Reactivity	Human
Tested Applications	ELISA, FC; Recommended dilution: FC: 1:50-1:200
Form	Liquid
Conjugate	Non-conjugated
Storage Buffer	Preservative: 0.03% Proclin 300 Constituents: 50% Glycerol, 0.01M PBS, PH 7.4
Purification Method	>95%, Protein G purified
Isotype	IgG1
Clonality	Monoclonal Antibody
Product Type	Monoclonal Antibody
Immunogen Species	Homo sapiens (Human)
Gene Names	HIST1H3A
Clone No.	3F4C1

Image



Overlay Peak curve showing Hela cells stained with CSB-MA010418PA28ph02HU (red line) at 1:100. The cells were incubated in 10% normal goat serum to block non-specific protein-protein interactions followed by the antibody (1µg/1*10⁶cells) for 1h at 4°C. The secondary antibody used was FITC-conjugated Goat Anti-Mouse IgG(H+L) at 1/100 dilution for 30min at 4°C. Isotype control antibody (green line) was mouse IgG1 (1µg/1*10⁶cells) used under the same conditions. Acquisition of >10,000 events was performed.



Overlay Peak curve showing HepG2 cells stained with CSB-MA010418PA28ph02HU (red line) at 1:100. The cells were incubated in 10% normal goat serum to block non-specific protein-protein interactions followed by the antibody (1µg/1*10⁶cells) for 1h at 4°C. The secondary antibody used was FITC-conjugated Goat Anti-Mouse IgG(H+L) at 1/100 dilution for 30min at 4°C. Isotype control antibody (green line) was mouse IgG1 (1µg/1*10⁶cells) used under the same conditions. Acquisition of >10,000 events was performed.