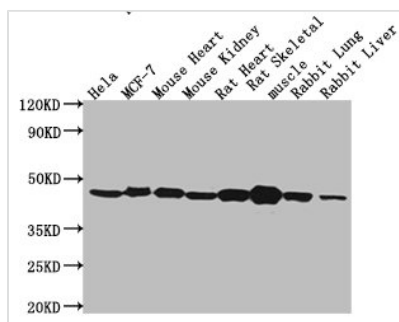




# ACTB Monoclonal Antibody

<b>Product Code</b>	CSB-MA000091M2m
<b>Storage</b>	Upon receipt, store at -20°C or -80°C. Avoid repeated freeze.
<b>Immunogen</b>	A synthesized peptide derived from human Beta-Actin (1-50AA)
<b>Raised In</b>	Mouse
<b>Species Reactivity</b>	Human, Mouse, Rat, Rabbit
<b>Specificity</b>	No significant cross-reactivity or interference was observed
<b>Tested Applications</b>	ELISA, WB; Recommended dilution: WB: 1:10000-1:1280000
<b>Relevance</b>	<p>Beta Actin, also named as ACTB and F-Actin, belongs to the actin family. Actins are highly conserved proteins that are involved in various types of cell motility and are ubiquitously expressed in all eukaryotic cells. Beta Actin has been widely used as the internal control in bioscience. At least six isoforms are known in mammals. ALPHA-actin was predominant in single cells and BETA-actin was major in the cultured cells. Nonmuscle BETA- and GAMMA-actin, also known as cytoplasmic actin, are predominantly expressed in nonmuscle cells. ALPHA-cardiac and <math>\alpha</math>-skeletal actin are expressed in striated cardiac and skeletal muscles, respectively; two smooth muscle actins, ALPHA- and GAMMA-actin, are found primarily in vascular smooth muscle and enteric smooth muscle, respectively. Most actins consist of 376aa, while ACTG2 (rich in muscles) has 375aa and ACTG1(found in non-muscle cells) has only 374aa. This antibody can detect endogenous level of <math>\beta</math>-Actin and may cross-react with other isoforms of actin family.</p>
<b>Form</b>	Liquid
<b>Conjugate</b>	Non-conjugated
<b>Storage Buffer</b>	Preservative: 0.03% Proclin 300 Constituents: 50% Glycerol, 0.01M PBS, PH 7.4
<b>Purification Method</b>	>95%, Protein G purified
<b>Isotype</b>	IgG1
<b>Clonality</b>	Monoclonal
<b>Product Type</b>	Monoclonal Antibody
<b>Target Names</b>	ACTB
<b>Clone No.</b>	6D8D8
<b>Image</b>	



#### Western Blot

Positive WB detected in: Hela whole cell lysate, MCF-7 whole cell lysate, Mouse heart tissue, Mouse kidney tissue, Rat heart tissue, Rat skeletal muscle tissue, Rabbit lung tissue, Rabbit liver tissue

All lanes: ACTB antibody at 1:5000

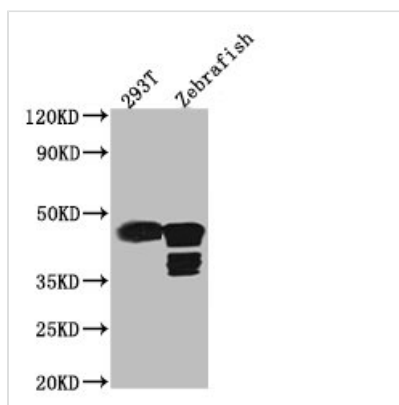
Secondary

Goat polyclonal to mouse IgG at 1/50000 dilution

Predicted band size: 42 KDa

Observed band size: 42 KDa

Exposure time?5min



#### Western Blot

Positive WB detected in: 293T whole cell lysate, Zebrafish tissue

All lanes: ACTB antibody at 1:5000

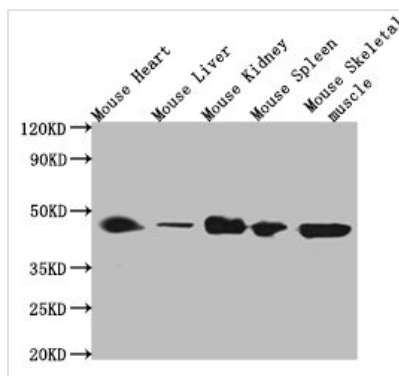
Secondary

Goat polyclonal to mouse IgG at 1/50000 dilution

Predicted band size: 42 KDa

Observed band size: 42 KDa

Exposure time?5min



#### Western Blot

Positive WB detected in: Mouse heart tissue, Mouse liver tissue, Mouse kidney tissue, Mouse spleen tissue, Mouse skeletal muscle tissue

All lanes: ACTB antibody at 1:5000

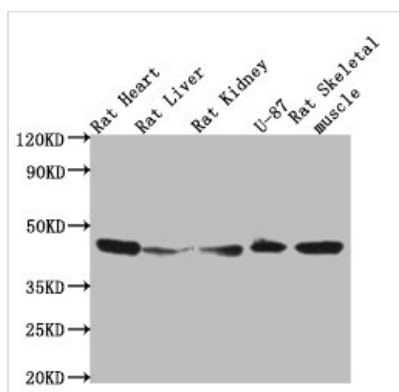
Secondary

Goat polyclonal to mouse IgG at 1/50000 dilution

Predicted band size: 42 KDa

Observed band size: 42 KDa

Exposure time?5min



#### Western Blot

Positive WB detected in: Rat heart tissue, Rat liver tissue, Rat kidney tissue, U87 whole cell lysate Rat skeletal muscle tissue

All lanes: ACTB antibody at 1:5000

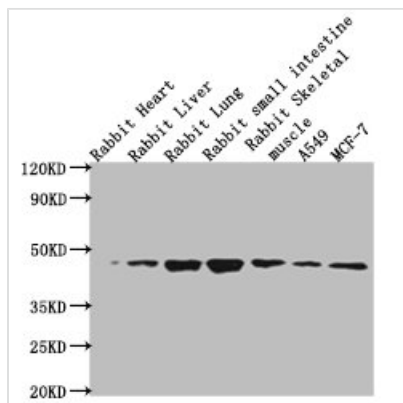
Secondary

Goat polyclonal to mouse IgG at 1/50000 dilution

Predicted band size: 42 KDa

Observed band size: 42 KDa

Exposure time?5min



#### Western Blot

Positive WB detected in: Rabbit heart tissue, Rabbit liver tissue, Rabbit lung tissue, Rabbit small intestine tissue, Rabbit skeletal muscle tissue, A549 whole cell lysate, MCF-7 whole cell lysate

All lanes: ACTB antibody at 1:5000

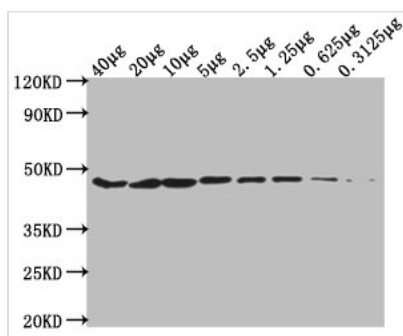
Secondary

Goat polyclonal to mouse IgG at 1/50000 dilution

Predicted band size: 42 KDa

Observed band size: 42 KDa

Exposure time?5min



#### Western Blot

Positive WB detected in: HeLa whole cell lysate at 40µg, 20µg, 10µg, 5µg, 2.5µg, 1.25µg, 0.625µg, 0.3125µg

All lanes: ACTB antibody at 1:5000

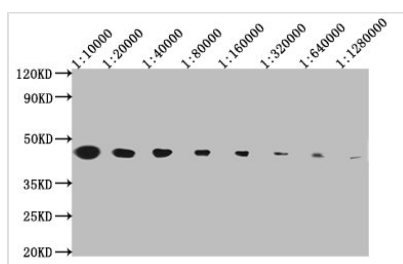
Secondary

Goat polyclonal to mouse IgG at 1/50000 dilution

Predicted band size: 42 KDa

Observed band size: 42 KDa

Exposure time?5min



#### Western Blot

Positive WB detected in: 20µg HeLa whole cell lysate

ACTB antibody at 1:10000, 1:20000, 1:40000, 1:80000, 1:160000, 1:320000, 1:640000, 1:1280000

Secondary

Goat polyclonal to mouse IgG at 1/50000 dilution

Predicted band size: 42 KDa

Observed band size: 42 KDa

Exposure time?5min