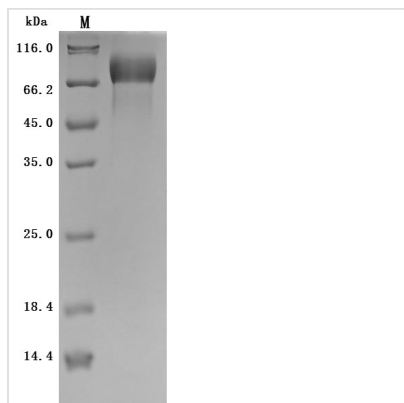


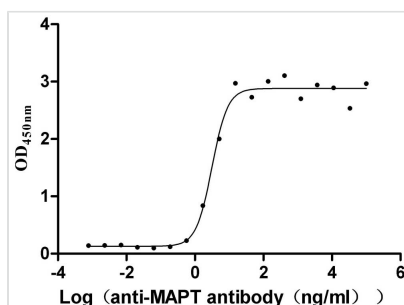


Recombinant *Macaca mulatta* Microtubule-associated protein tau (MAPT) (Active)

Product Code	CSB-MP013481MOW
Abbreviation	Recombinant Rhesus macaque MAPT protein (Active)
Storage	The shelf life is related to many factors, storage state, buffer ingredients, storage temperature and the stability of the protein itself. Generally, the shelf life of liquid form is 6 months at -20°C/-80°C. The shelf life of lyophilized form is 12 months at -20°C/-80°C.
Uniprot No.	P57786
Form	Lyophilized powder
Storage Buffer	Lyophilized from a 0.2 μm filtered 20 mM Tris-HCl, 0.5 M NaCl, 6% Trehalose, pH 8.0
Product Type	Recombinant Protein
Immunogen Species	<i>Macaca mulatta</i> (Rhesus macaque)
Biological Activity	Measured by its binding ability in a functional ELISA. Immobilized <i>Macaca mulatta</i> MAPT at 2 μg/mL can bind anti-MAPT recombinant antibody (CSB-RA013481A1HU), the EC ₅₀ is 2.464-3.979 ng/mL.
Purity	Greater than 95% as determined by SDS-PAGE.
Sequence	AEPRQEFDV MEDHAGTYGLGDRKDQEGY TMLQDQEGD TDAGLKESPLQTPA EDGSEELGSETSDAKSTPTAEDVTAPLVDERAPGEQAAAQPHMEIPEGTTAAE AGIGDTPSLEDEAAGHV TQARMVSKSKDGTGSDDKKAKGADGKTKIATPRGA APPGQKGGANATRIPAKTPPAPKTPPSSATKQVQRKPPPAEPTSERGEPKKS GDRSGYSSPGSPGTPGSR SRTPSLPTPPAREPKK VAVVRTPPKSPSSAKSRL QTAPVMPDLKNVKS KIGSTENLKHQPGGGKVQIINKKLDLSNVQSKCGSKDN IKHVPGGGSVQIVYK PVDLSKVTSKCGSLGNIHHKPGGGQVEVKSEKLD FKDR VQSKIGSLDNITHV PGGGNKKIETHKLT FRENAAKAKTDHGAEIVYKSPVVSGDT SPRHLSNVSS TGSIDMVDSPQLATLADEV SASLAKQGL
Source	Mammalian cell
Target Names	MAPT
Expression Region	2-459aa
Notes	Repeated freezing and thawing is not recommended. Store working aliquots at 4°C for up to one week.
Tag Info	N-terminal 10xHis-tagged
Mol. Weight	50.6 kDa
Protein Length	Full Length of Mature Protein
Image	



(Tris-Glycine gel) Discontinuous SDS-PAGE (reduced) with 5% enrichment gel and 15% separation gel.



Activity
 Measured by its binding ability in a functional ELISA. Immobilized *Macaca mulatta* MAPT at 2 µg/ml can bind anti-MAPT recombinant antibody (CSB-RA013481A1HU), the EC₅₀ is 2.464-3.979 ng/mL.

Endotoxin

Less than 1.0 EU/ug as determined by LAL method.

Reconstitution

We recommend that this vial be briefly centrifuged prior to opening to bring the contents to the bottom. Please reconstitute protein in deionized sterile water to a concentration of 0.1-1.0 mg/mL. We recommend to add 5-50% of glycerol (final concentration) and aliquot for long-term storage at -20°C/-80°C. Our default final concentration of glycerol is 50%. Customers could use it as reference.

Shelf Life

The shelf life is related to many factors, storage state, buffer ingredients, storage temperature and the stability of the protein itself. Generally, the shelf life of liquid form is 6 months at -20°C/-80°C. The shelf life of lyophilized form is 12 months at -20°C/-80°C.