

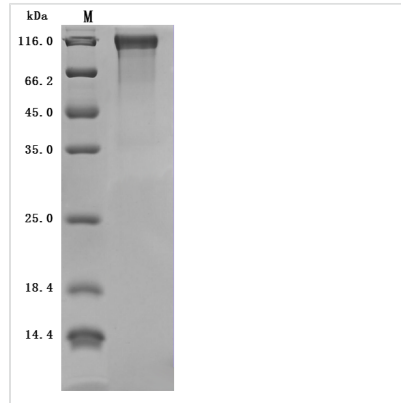


Recombinant Mouse Microtubule-associated protein tau (Mapt) (Active)

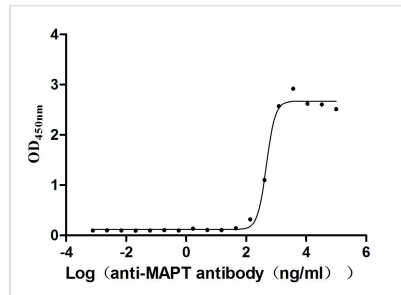
Product Code	CSB-MP013481MO
Abbreviation	Recombinant Mouse Mapt protein (Active)
Storage	The shelf life is related to many factors, storage state, buffer ingredients, storage temperature and the stability of the protein itself. Generally, the shelf life of liquid form is 6 months at -20°C/-80°C. The shelf life of lyophilized form is 12 months at -20°C/-80°C.
Uniprot No.	P10637
Form	Lyophilized powder
Storage Buffer	Lyophilized from a 0.2 μm filtered 20 mM Tris-HCl, 0.5 M NaCl, 6% Trehalose, pH 8.0
Product Type	Recombinant Protein
Immunogen Species	Mus musculus (Mouse)
Biological Activity	Measured by its binding ability in a functional ELISA. Immobilized Mouse Mapt at 2 μg/mL can bind anti-MAPT recombinant antibody (CSB-RA013481A1HU), the EC ₅₀ is 436.1-518.6 ng/mL.
Purity	Greater than 90% as determined by SDS-PAGE.
Sequence	ADPRQEFDTMEDHAGDYLLQDQEGDMDHGLKESPPQPPADDGAEPEGSET SDAKSTPTAEDVTAPLVDERAPDKQAAAQPHTEIPEGITAEAEAGIGDTPNQED QAAGHVTQGRREGQAPDLGTSWTRQQVSSMSGAPLLPQGLREATCQPSG TRPEDIKSHPASELLRRGPPQKEGWGQDRLGSEEEVDEDLTVDESSQDSPP SQASLTPGRAAPQAGSGSVCGETASVPGLPTEGSVPLPADFFSKVSAETQAS QPEGPGTGPMEEGHEAAPEFTFHV EIKASTPKEQDLEGATVVGVPGEEQKAQ TQGPSVGKGTKEASLQEPGKQPAAGLPGRPVS RVPQLKARVASKDRTGND EKKAKTSTPSCAKAPSHR PCLSPTRPTLGSSDPLIKPSSPAVSEPATSPKHVS SVTPRNGSPGTKQMKLKGADGKTGAKIATPRGAASPAQKGTSNATRIPAKTTP SPKTPPGSGEPPKSGERSGYSSPGSPGTPGSRSRTPSLPTPPTREP KKVAVV RTPPKSPSASKSRLQTAPVPM PDLKNVRSKIGSTENLKHQPGGGKVQIINKKL DLSNVQSKCGSKDNIKHVPGGGSVQIVYKPV DLSKVTSKCGSLGNIHHKPGG GQVEVKSEKLDKDRVQSKIGSLDNITHVPGGGNKKIETHKLTFRENAKAKTD HGAEIVYKSPVVS GDTSPRHLSNVSS TGSIDMVDS PQLATLADEV SASLAKQG L
Source	Mammalian cell
Target Names	Mapt
Expression Region	2-733aa
Notes	Repeated freezing and thawing is not recommended. Store working aliquots at 4°C for up to one week.
Tag Info	N-terminal 10xHis-tagged



Mol. Weight	78.9 kDa
Protein Length	Full Length of Mature Protein

Image


(Tris-Glycine gel) Discontinuous SDS-PAGE (reduced) with 5% enrichment gel and 15% separation gel.



Activity
 Measured by its binding ability in a functional ELISA. Immobilized Mouse Mapt at 2 µg/ml can bind anti-MAPT recombinant antibody (CSB-RA013481A1HU), the EC₅₀ is 436.1-518.6 ng/mL.

Endotoxin	Less than 1.0 EU/ug as determined by LAL method.
Reconstitution	We recommend that this vial be briefly centrifuged prior to opening to bring the contents to the bottom. Please reconstitute protein in deionized sterile water to a concentration of 0.1-1.0 mg/mL. We recommend to add 5-50% of glycerol (final concentration) and aliquot for long-term storage at -20°C/-80°C. Our default final concentration of glycerol is 50%. Customers could use it as reference.
Shelf Life	The shelf life is related to many factors, storage state, buffer ingredients, storage temperature and the stability of the protein itself. Generally, the shelf life of liquid form is 6 months at -20°C/-80°C. The shelf life of lyophilized form is 12 months at -20°C/-80°C.