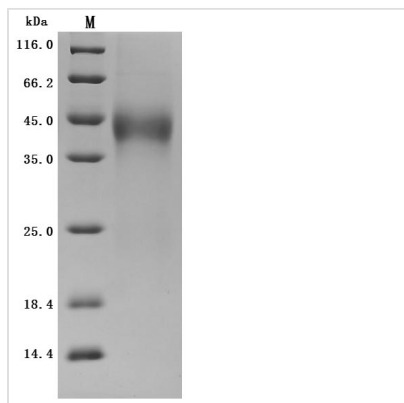


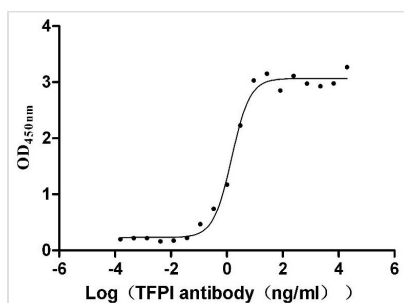


Recombinant Human Tissue factor pathway inhibitor (TFPI), partial (Active)

Product Code	CSB-MP023437HU
Abbreviation	Recombinant Human TFPI protein, partial (Active)
Storage	The shelf life is related to many factors, storage state, buffer ingredients, storage temperature and the stability of the protein itself. Generally, the shelf life of liquid form is 6 months at -20°C/-80°C. The shelf life of lyophilized form is 12 months at -20°C/-80°C.
Uniprot No.	P10646
Form	Lyophilized powder
Storage Buffer	Lyophilized from a 0.2 µm filtered 20 mM Tris-HCl, 0.5 M NaCl, 6% Trehalose, pH 8.0
Product Type	Recombinant Protein
Immunogen Species	Homo sapiens (Human)
Biological Activity	Measured by its binding ability in a functional ELISA. Immobilized Human TFPI at 1 µg/mL can bind Anti-TFPI recombinant antibody (CSB-RA023437MA01HU), the EC ₅₀ is 1.242-1.788 ng/mL.
Purity	≥ 95% as determined by SDS-PAGE.
Sequence	DSEEDDEHTIITDELPLKLMHSFCAFKADDGPCKAIMKRFFFFNIFTRQCEEFI YGGCEGNQNRFESELECKKMCTRDNANRIIKTTLQQEKPDFCFLEEDPGICRG YITRYFYNNQTKQCERFKYGGCLGNMNNFETLEECKNICEDGPNGFQVDNYG TQLNAVNNSLTPQSTKVPSLFEFHGPSWCLTPADRGLCRANENRFYYNSVIGK CRPFKYSGCGGNENNFTSKQECLRACKKGFIRISKGLIK
Source	Mammalian cell
Target Names	TFPI
Expression Region	29-282aa
Notes	Repeated freezing and thawing is not recommended. Store working aliquots at 4°C for up to one week.
Tag Info	C-terminal 10xHis-tagged
Mol. Weight	31.9 kDa
Protein Length	Partial
Image	



(Tris-Glycine gel) Discontinuous SDS-PAGE (reduced) with 5% enrichment gel and 15% separation gel.



Activity
Measured by its binding ability in a functional ELISA. Immobilized Human TFPI at 1 $\mu\text{g/ml}$ can bind Anti-TFPI recombinant antibody (CSB-RA023437MA01HU), the EC_{50} is 1.242-1.788 ng/mL.

Endotoxin

Less than 1.0 EU/ μg as determined by LAL method.

Reconstitution

We recommend that this vial be briefly centrifuged prior to opening to bring the contents to the bottom. Please reconstitute protein in deionized sterile water to a concentration of 0.1-1.0 mg/mL. We recommend to add 5-50% of glycerol (final concentration) and aliquot for long-term storage at $-20^{\circ}\text{C}/-80^{\circ}\text{C}$. Our default final concentration of glycerol is 50%. Customers could use it as reference.

Shelf Life

The shelf life is related to many factors, storage state, buffer ingredients, storage temperature and the stability of the protein itself. Generally, the shelf life of liquid form is 6 months at $-20^{\circ}\text{C}/-80^{\circ}\text{C}$. The shelf life of lyophilized form is 12 months at $-20^{\circ}\text{C}/-80^{\circ}\text{C}$.