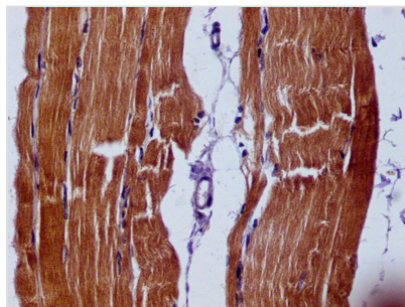




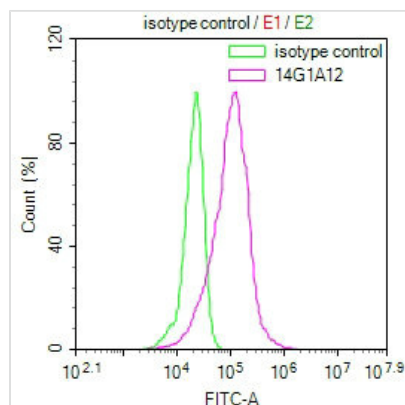
SLN Monoclonal Antibody

Product Code	CSB-MA021780A0m
Storage	Upon receipt, store at -20°C or -80°C. Avoid repeated freeze.
Uniprot No.	O00631
Immunogen	Recombinant Human SLN protein (1-31AA)
Raised In	Mouse
Species Reactivity	Human
Specificity	No significant cross-reactivity or interference was observed
Tested Applications	ELISA, WB, IF, FC; Recommended dilution: WB?1:1000-1:5000, IF:1:50-1:200, FC:1:50-1:200
Form	Liquid
Conjugate	Non-conjugated
Storage Buffer	Preservative: 0.03% Proclin 300 Constituents: 50% Glycerol, 0.01M PBS, PH 7.4
Purification Method	>95%, Protein G purified
Isotype	IgG2b
Clonality	Monoclonal
Product Type	Monoclonal Antibody
Immunogen Species	Homo sapiens (Human)
Gene Names	SLN
Clone No.	14G1A12

Image



IHC image of CSB-MA021780A0m diluted at 1:60 and staining in paraffin-embedded human skeletal muscle tissue performed on a Leica BondTM system. After dewaxing and hydration, antigen retrieval was mediated by high pressure in a citrate buffer (pH 6.0). Section was blocked with 10% normal goat serum 30min at RT. Then primary antibody (1% BSA) was incubated at 4°C overnight. The primary is detected by a biotinylated secondary antibody and visualized using an HRP conjugated SP system.



Overlay Peak curve showing U87 cells stained with CSB-MA021780A0m (red line) at 1:60. The cells were incubated in 10% normal goat serum to block non-specific protein-protein interactions followed by the antibody ($1\mu\text{g}/1 \times 10^6 \text{ cells}$) for 1h at 4°C . The secondary antibody used was FITC-conjugated Goat Anti-Mouse IgG(H+L) at 1/100 dilution for 30min at 4°C . Isotype control antibody (green line) was mouse IgG1 ($1\mu\text{g}/1 \times 10^6 \text{ cells}$) used under the same conditions. Acquisition of $>10,000$ events was performed.