



Recombinant *Macaca mulatta* Semaphorin-4D isoform 1 (SEMA4D), partial (Active)

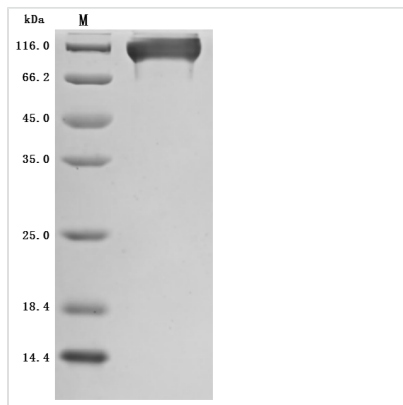
Product Code	CSB-MP3947MOW
Abbreviation	Recombinant Rhesus macaque SEMA4D protein, partial (Active)
Storage	The shelf life is related to many factors, storage state, buffer ingredients, storage temperature and the stability of the protein itself. Generally, the shelf life of liquid form is 6 months at -20°C/-80°C. The shelf life of lyophilized form is 12 months at -20°C/-80°C.
Uniprot No.	H9FNS0
Form	Lyophilized powder
Storage Buffer	Lyophilized from a 0.2 µm filtered 20 mM Tris-HCl, 0.5 M NaCl, 6% Trehalose, pH 8.0
Product Type	Recombinant Protein
Immunogen Species	<i>Macaca mulatta</i> (Rhesus macaque)
Biological Activity	Measured by its binding ability in a functional ELISA. Immobilized Rhesus macaque SEMA4D at 2 µg/mL can bind Anti-SEMA4D recombinant antibody (CSB-RA835707A1HU), the EC ₅₀ is 1.943-2.724 ng/mL.
Purity	≥ 95% as determined by SDS-PAGE.
Sequence	FAPIPRITWEHREVRLVQFHEPDIYNYSALLLSEDKDTLYIGAREAVFAVNALNI SEKQHEVYWKVSEDKKAKCAEKGKSKQTECLNYIRVLQPLSATSLSLYVCGTNAF QPACDHLNLTsfkflgknEDGKGRCPFDPAHSYTSVMVDGELYSGTSYNFLG SEPIISRNSSHSPLRTEYAIPWLNESFVFADVIRKSPDSDGEDDRVYFFFTEV SVEYEFVFRVLIPRIARVCKGDQGGRLTLQKKWTSFLKARLICSRPDSSLVFNV LRDVFVLRSPGLKVPVYALFTPQLNNVGLSAVCAYNLSIAEEVFVSHGKYMQS ATVEQSHTKWVRYNGPVPKPRPGACIDSEARAANYTSSLNLPDKTLQFVKDH PLMDDSVTPIDNRPRLIKDVNYTQIVVDRTQALDGTVDVMFVSTDRGALHK AISLEHAVHIIIEETQLFQDFEPVQTLSSKKGRRFVYAGSNVGVVQAPLAFCG KHGTCEDCVLARDPYCAWSPPTATCVLYQTESPSRGLVQEMSGDASVCPD KSKGSYRQHFFKHGGTAELKCSQKSNLARVFWKFNQVGLKAESPKYGLMGR KNLLIFNLSEGDSGVYQCLSEERVKNKTVFQVVAKHVLEVKVVPKPVVAPTLVS VQTEGSRIATKVLVASTQGSSPPTPAVQATSSGAILPVPKPVPTSTSTCEPKIVIN TVPQLHSEKTMYLKSSDNR
Source	Mammalian cell
Target Names	SEMA4D
Expression Region	24-734aa
Notes	Repeated freezing and thawing is not recommended. Store working aliquots at 4°C for up to one week.
Tag Info	C-terminal 10xHis-tagged



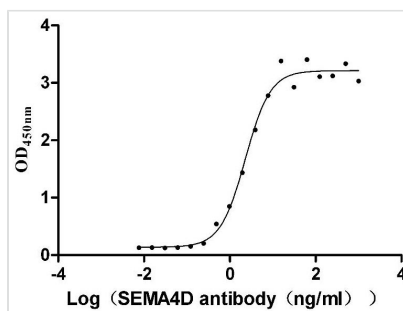
Mol. Weight 81.9 kDa

Protein Length Partial

Image



(Tris-Glycine gel) Discontinuous SDS-PAGE (reduced) with 5% enrichment gel and 15% separation gel.



Activity
Measured by its binding ability in a functional ELISA. Immobilized Rhesus macaque SEMA4D at 2 µg/mL can bind Anti-SEMA4D recombinant antibody (CSB-RA835707A1HU), the EC₅₀ is 1.943-2.724 ng/mL.

Endotoxin Less than 1.0 EU/ug as determined by LAL method.

Reconstitution We recommend that this vial be briefly centrifuged prior to opening to bring the contents to the bottom. Please reconstitute protein in deionized sterile water to a concentration of 0.1-1.0 mg/mL. We recommend to add 5-50% of glycerol (final concentration) and aliquot for long-term storage at -20°C/-80°C. Our default final concentration of glycerol is 50%. Customers could use it as reference.

Shelf Life The shelf life is related to many factors, storage state, buffer ingredients, storage temperature and the stability of the protein itself. Generally, the shelf life of liquid form is 6 months at -20°C/-80°C. The shelf life of lyophilized form is 12 months at -20°C/-80°C.