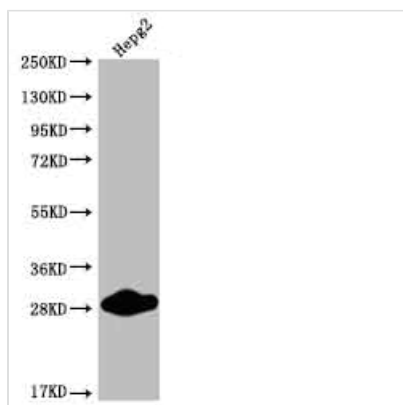




CDX1 Recombinant Monoclonal Antibody

Product Code	CSB-RA987794A0HU
Storage	Upon receipt, store at -20°C or -80°C. Avoid repeated freeze.
Uniprot No.	P47902
Immunogen	A synthesized peptide derived from human CDX1
Species Reactivity	Human
Tested Applications	ELISA, WB, IF; Recommended dilution: WB:1:500-1:2000, IF:1:50-1:200
Relevance	Plays a role in transcriptional regulation (PubMed:24623306). Involved in activated KRAS-mediated transcriptional activation of PRKD1 in colorectal cancer (CRC) cells (PubMed:24623306). Binds to the PRKD1 promoter in colorectal cancer (CRC) cells (PubMed:24623306). Could play a role in the terminal differentiation of the intestine. Binds preferentially to methylated DNA (PubMed:28473536). {ECO:0000269 PubMed:24623306, ECO:0000269 PubMed:28473536}.
Form	Liquid
Conjugate	Non-conjugated
Storage Buffer	Rabbit IgG in 10mM phosphate buffered saline , pH 7.4, 150mM sodium chloride, 0.05% BSA, 0.02% sodium azide and 50% glycerol.
Purification Method	Affinity-chromatography
Isotype	Rabbit IgG
Clonality	Monoclonal
Product Type	Recombinant Antibody
Immunogen Species	Homo sapiens (Human)
Research Area	Epigenetics and Nuclear Signaling
Target Names	CDX1
Clone No.	11E10

Image



Western Blot

Positive WB detected in: HepG2 whole cell lysate

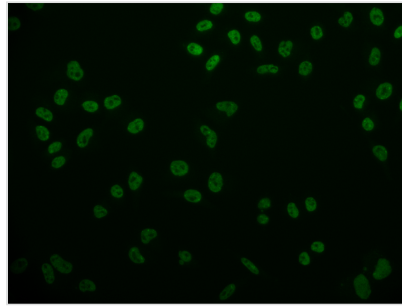
All lanes: CDX1 antibody at 1:2000

Secondary

Goat polyclonal to rabbit IgG at 1/50000 dilution

Predicted band size: 29, 15 kDa

Observed band size: 25-30 kDa



Immunofluorescence staining of HeLa cell with CSB-RA987794A0HU at 1:50, counter-stained with DAPI. The cells were fixed in 4% formaldehyde and blocked in 10% normal Goat Serum. The cells were then incubated with the antibody overnight at 4°C. The secondary antibody was Alexa Fluor 524-conjugated AffiniPure Goat Anti-Rabbit IgG(H+L).

Usage

For Research Use Only. Not for use in diagnostic or therapeutic procedures.