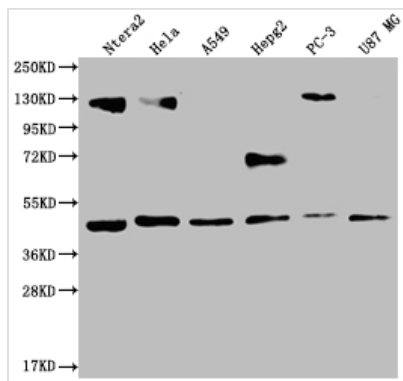




HIF1AN Recombinant Monoclonal Antibody

Product Code	CSB-RA256295A0HU
Storage	Upon receipt, store at -20°C or -80°C. Avoid repeated freeze.
Uniprot No.	Q9NWT6
Immunogen	A synthesized peptide derived from human HIF1AN
Species Reactivity	Human
Tested Applications	ELISA, WB, IHC, IF, FC; Recommended dilution: WB:1:500-1:2000, IHC:1:50-1:200, IF:1:50-1:200, FC:1:50-1:200
Relevance	Hydroxylates HIF-1 alpha at 'Asn-803' in the C-terminal transactivation domain (CAD). Functions as an oxygen sensor and, under normoxic conditions, the hydroxylation prevents interaction of HIF-1 with transcriptional coactivators including Cbp/p300-interacting transactivator. Involved in transcriptional repression through interaction with HIF1A, VHL and histone deacetylases. Hydroxylates specific Asn residues within ankyrin repeat domains (ARD) of NFKB1, NFKBIA, NOTCH1, ASB4, PPP1R12A and several other ARD-containing proteins. Also hydroxylates Asp and His residues within ARDs of ANK1 and TNKS2, respectively. Negatively regulates NOTCH1 activity, accelerating myogenic differentiation. Positively regulates ASB4 activity, promoting vascular differentiation. {ECO:0000269 PubMed:12042299, ECO:0000269 PubMed:12080085, ECO:0000269 PubMed:17003112, ECO:0000269 PubMed:17573339, ECO:0000269 PubMed:18299578, ECO:0000269 PubMed:19245366, ECO:0000269 PubMed:21177872, ECO:0000269 PubMed:21251231}.
Form	Liquid
Conjugate	Non-conjugated
Storage Buffer	Rabbit IgG in 10mM phosphate buffered saline , pH 7.4, 150mM sodium chloride, 0.05% BSA, 0.02% sodium azide and 50% glycerol.
Purification Method	Affinity-chromatography
Isotype	Rabbit IgG
Clonality	Monoclonal
Product Type	Recombinant Antibody
Immunogen Species	Homo sapiens (Human)
Research Area	Epigenetics and Nuclear Signaling; Cancer; Cardiovascular
Target Names	HIF1AN
Clone No.	12F11
Image	



Western Blot

Positive WB detected in: Ntera-2 whole cell lysate, Hela whole cell lysate, A549 whole cell lysate, HepG2 whole cell lysate, PC3 whole cell lysate, U87 whole cell lysate

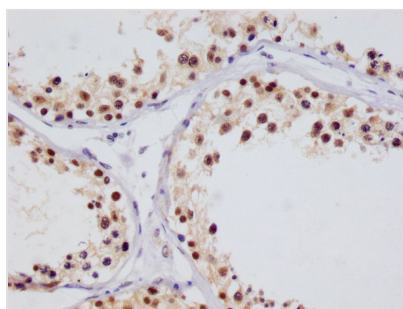
All lanes: HIF1AN antibody at 1:2000

Secondary

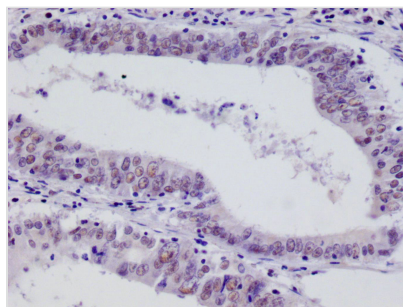
Goat polyclonal to rabbit IgG at 1/50000 dilution

Predicted band size: 41 kDa

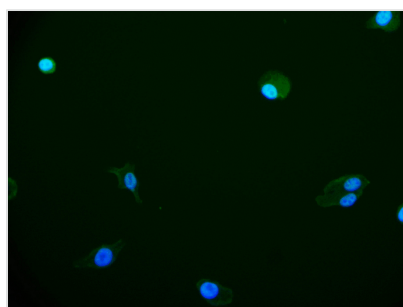
Observed band size: 36-53 kDa



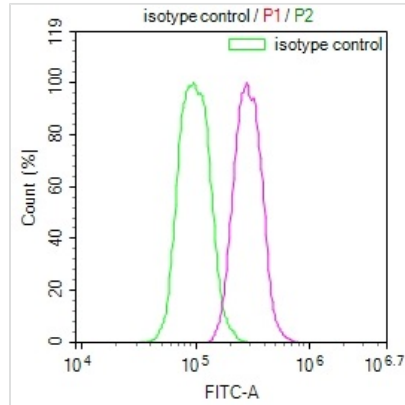
IHC image of CSB-RA256295A0HU diluted at 1:100 and staining in paraffin-embedded human testis tissue performed on a Leica Bond™ system. After dewaxing and hydration, antigen retrieval was mediated by high pressure in a citrate buffer (pH 6.0). Section was blocked with 10% normal goat serum 30min at RT. Then primary antibody (1% BSA) was incubated at 4°C overnight. The primary is detected by a Goat anti-rabbit polymer IgG labeled by HRP and visualized using 0.05% DAB.



IHC image of CSB-RA256295A0HU diluted at 1:100 and staining in paraffin-embedded human colon cancer performed on a Leica Bond™ system. After dewaxing and hydration, antigen retrieval was mediated by high pressure in a citrate buffer (pH 6.0). Section was blocked with 10% normal goat serum 30min at RT. Then primary antibody (1% BSA) was incubated at 4°C overnight. The primary is detected by a Goat anti-rabbit polymer IgG labeled by HRP and visualized using 0.05% DAB.



Immunofluorescence staining of HepG2 cell with CSB-RA256295A0HU at 1:50, counter-stained with DAPI. The cells were fixed in 4% formaldehyde and blocked in 10% normal Goat Serum. The cells were then incubated with the antibody overnight at 4°C. The secondary antibody was Alexa Fluor 525-conjugated AffiniPure Goat Anti-Rabbit IgG(H+L).



Overlay Peak curve showing HeLa cells stained with CSB-RA256295A0HU (red line) at 1:100. The cells were fixed in 4% formaldehyde and permeated by 0.2% TritonX-100. Then 10% normal goat serum to block non-specific protein-protein interactions followed by the antibody (1ug/1*10⁶cells) for 45min at 4?. The secondary antibody used was FITC-conjugated Goat Anti-rabbit IgG(H+L) at 1:200 dilution for 35min at 4?. Control antibody (green line) was rabbit IgG (1ug/1*10⁶cells) used under the same conditions. Acquisition of >10,000 events was performed.

Usage

For Research Use Only. Not for use in diagnostic or therapeutic procedures.