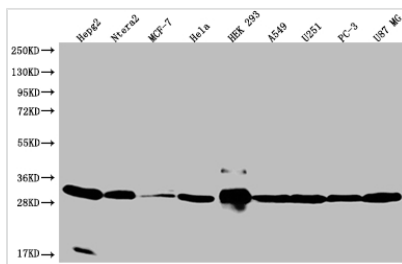




BCAP31 Recombinant Monoclonal Antibody

Product Code	CSB-RA834263A0HU
Storage	Upon receipt, store at -20°C or -80°C. Avoid repeated freeze.
Uniprot No.	P51572
Immunogen	A synthesized peptide derived from human BCAP31
Species Reactivity	Human
Tested Applications	ELISA, WB, IHC, IF, FC; Recommended dilution: WB:1:500-1:2000, IHC:1:50-1:200, IF:1:50-1:200, FC:1:50-1:200
Relevance	Functions as a chaperone protein (PubMed:9396746, PubMed:18287538). Is one of the most abundant endoplasmic reticulum (ER) proteins (PubMed:9396746, PubMed:18287538). Plays a role in the export of secreted proteins in the ER, the recognition of abnormally folded protein and their targeting to the ER associated-degradation (ERAD) (PubMed:9396746, PubMed:18287538). Also serves as a cargo receptor for the export of transmembrane proteins (By similarity). Plays a role in the assembly of the mitochondrial membrane respiratory chain NADH dehydrogenase (Complex I) by stimulating the translocation of NDUFS4 and NDUFB11 from the cytosol to the mitochondria via interaction with TOMM40 (PubMed:31206022). In response to ER stress, delocalizes from the ER-mitochondria contact sites and binds BCL2 (PubMed:31206022). May be involved in CASP8-mediated apoptosis (PubMed:10958671). {ECO:0000250 UniProtKB:Q61335, ECO:0000269 PubMed:10958671, ECO:0000269 PubMed:18287538, ECO:0000269 PubMed:31206022, ECO:0000269 PubMed:9396746}.
Form	Liquid
Conjugate	Non-conjugated
Storage Buffer	Rabbit IgG in 10mM phosphate buffered saline , pH 7.4, 150mM sodium chloride, 0.05% BSA, 0.02% sodium azide and 50% glycerol.
Purification Method	Affinity-chromatography
Isotype	Rabbit IgG
Clonality	Monoclonal
Product Type	Recombinant Antibody
Immunogen Species	Homo sapiens (Human)
Research Area	Cell biology
Target Names	BCAP31
Clone No.	12G12
Image	



Western Blot

Positive WB detected in: HepG2 whole cell lysate, Ntera-2 whole cell lysate, MCF-7 whole cell lysate, Hela whole cell lysate, HEK293 whole cell lysate, A549 whole cell lysate, U251 whole cell lysate, PC3 whole cell lysate, U87 whole cell lysate

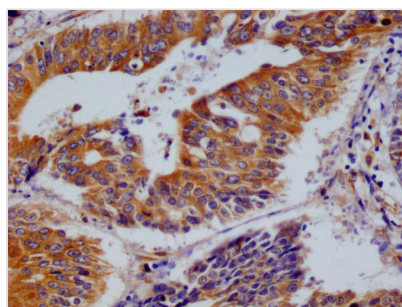
All lanes: BCAP31 antibody at 1:2000

Secondary

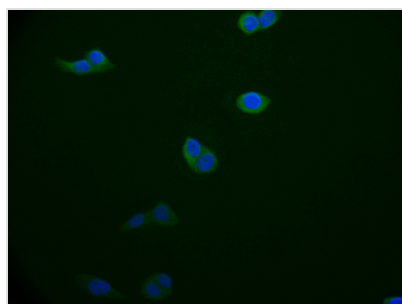
Goat polyclonal to rabbit IgG at 1/50000 dilution

Predicted band size: 28, 35 kDa

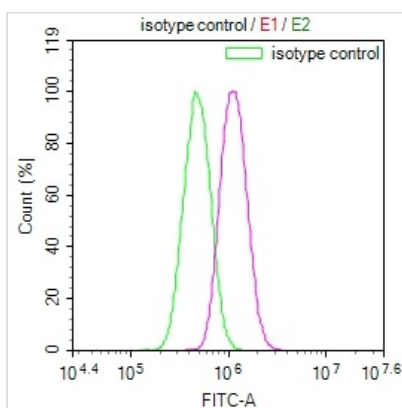
Observed band size: 28-36 kDa



IHC image of CSB-RA834263A0HU diluted at 1:100 and staining in paraffin-embedded human colon cancer performed on a Leica BondTM system. After dewaxing and hydration, antigen retrieval was mediated by high pressure in a citrate buffer (pH 6.0). Section was blocked with 10% normal goat serum 30min at RT. Then primary antibody (1% BSA) was incubated at 4°C overnight. The primary is detected by a Goat anti-rabbit polymer IgG labeled by HRP and visualized using 0.05% DAB.



Immunofluorescence staining of A549 cell with CSB-RA834263A0HU at 1:50, counter-stained with DAPI. The cells were fixed in 4% formaldehyde and blocked in 10% normal Goat Serum. The cells were then incubated with the antibody overnight at 4°C. The secondary antibody was Alexa Fluor 526-conjugated AffiniPure Goat Anti-Rabbit IgG(H+L).



Overlay Peak curve showing PC3 cells stained with CSB-RA834263A0HU (red line) at 1:100. The cells were fixed in 4% formaldehyde and permeated by 0.2% TritonX-100. Then 10% normal goat serum to block non-specific protein-protein interactions followed by the antibody (1ug/1*10⁶cells) for 45min at 4?. The secondary antibody used was FITC-conjugated Goat Anti-rabbit IgG(H+L) at 1:200 dilution for 35min at 4?. Control antibody (green line) was rabbit IgG (1ug/1*10⁶cells) used under the same conditions. Acquisition of >10,000 events was performed.

Usage

For Research Use Only. Not for use in diagnostic or therapeutic procedures.