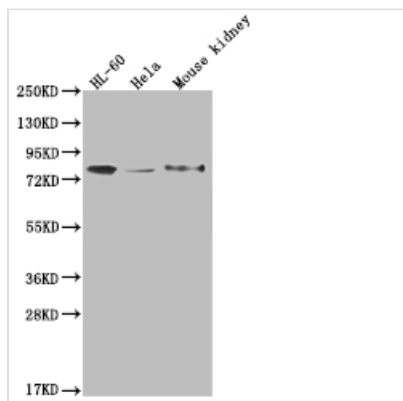




# OS9 Recombinant Monoclonal Antibody

<b>Product Code</b>	CSB-RA959292A0HU
<b>Storage</b>	Upon receipt, store at -20°C or -80°C. Avoid repeated freeze.
<b>Uniprot No.</b>	Q13438
<b>Immunogen</b>	A synthesized peptide derived from human OS9
<b>Species Reactivity</b>	Human, Mouse
<b>Tested Applications</b>	ELISA, WB, IHC; Recommended dilution: WB:1:500-1:2000, IHC:1:50-1:200
<b>Relevance</b>	Lectin which functions in endoplasmic reticulum (ER) quality control and ER-associated degradation (ERAD). May bind terminally misfolded non-glycosylated proteins as well as improperly folded glycoproteins, retain them in the ER, and possibly transfer them to the ubiquitination machinery and promote their degradation. Possible targets include TRPV4. {ECO:0000269 PubMed:17932042, ECO:0000269 PubMed:18264092, ECO:0000269 PubMed:18417469, ECO:0000269 PubMed:19084021, ECO:0000269 PubMed:19346256, ECO:0000269 PubMed:21172656}.
<b>Form</b>	Liquid
<b>Conjugate</b>	Non-conjugated
<b>Storage Buffer</b>	Rabbit IgG in 10mM phosphate buffered saline , pH 7.4, 150mM sodium chloride, 0.05% BSA, 0.02% sodium azide and 50% glycerol.
<b>Purification Method</b>	Affinity-chromatography
<b>Isotype</b>	Rabbit IgG
<b>Clonality</b>	Monoclonal
<b>Product Type</b>	Recombinant Antibody
<b>Immunogen Species</b>	Homo sapiens (Human)
<b>Research Area</b>	Epigenetics and Nuclear Signaling; Cancer; Cardiovascular; Metabolism
<b>Target Names</b>	OS9
<b>Clone No.</b>	26H3

## Image

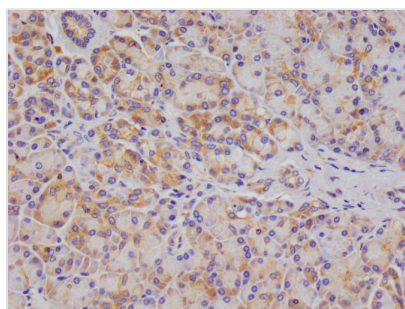


### Western Blot

Positive WB detected in: HL-60 whole cell lysate, HeLa whole cell lysate, Mouse kidney tissue  
All lanes: OS9 antibody at 1:2000

### Secondary

Goat polyclonal to rabbit IgG at 1/50000 dilution  
Predicted band size: 76, 70, 68, 74, 66, 64, 70, 61 kDa  
Observed band size: 72-95 kDa



IHC image of CSB-RA959292A0HU diluted at 1:100 and staining in paraffin-embedded human pancreatic tissue performed on a Leica Bond™ system. After dewaxing and hydration, antigen retrieval was mediated by high pressure in a citrate buffer (pH 6.0). Section was blocked with 10% normal goat serum 30min at RT. Then primary antibody (1% BSA) was incubated at 4°C overnight. The primary is detected by a Goat anti-rabbit polymer IgG labeled by HRP and visualized using 0.05% DAB.

## Usage

For Research Use Only. Not for use in diagnostic or therapeutic procedures.