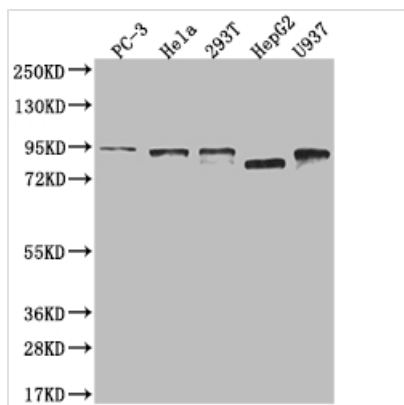




# DBF4 Recombinant Monoclonal Antibody

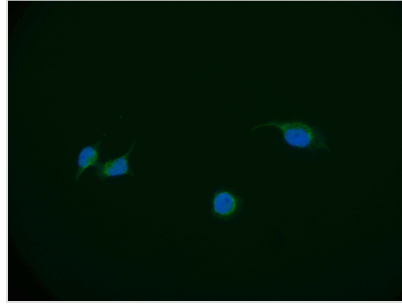
<b>Product Code</b>	CSB-RA155202A0HU
<b>Storage</b>	Upon receipt, store at -20°C or -80°C. Avoid repeated freeze.
<b>Uniprot No.</b>	Q9UBU7
<b>Immunogen</b>	A synthesized peptide derived from human DBF4
<b>Species Reactivity</b>	Human
<b>Tested Applications</b>	ELISA, WB, IF; Recommended dilution: WB:1:500-1:2000, IF:1:50-1:200
<b>Relevance</b>	Regulatory subunit for CDC7 which activates its kinase activity thereby playing a central role in DNA replication and cell proliferation. Required for progression of S phase. The complex CDC7-DBF4A selectively phosphorylates MCM2 subunit at 'Ser-40' and 'Ser-53' and then is involved in regulating the initiation of DNA replication during cell cycle. {ECO:0000269 PubMed:10373557, ECO:0000269 PubMed:10523313, ECO:0000269 PubMed:17062569}.
<b>Form</b>	Liquid
<b>Conjugate</b>	Non-conjugated
<b>Storage Buffer</b>	Rabbit IgG in 10mM phosphate buffered saline , pH 7.4, 150mM sodium chloride, 0.05% BSA, 0.02% sodium azide and 50% glycerol.
<b>Purification Method</b>	Affinity-chromatography
<b>Isotype</b>	Rabbit IgG
<b>Clonality</b>	Monoclonal
<b>Product Type</b>	Recombinant Antibody
<b>Immunogen Species</b>	Homo sapiens (Human)
<b>Research Area</b>	Epigenetics and Nuclear Signaling; Cell biology
<b>Target Names</b>	DBF4
<b>Clone No.</b>	24D8

## Image



### Western Blot

Positive WB detected in: PC3 whole cell lysate, HeLa whole cell lysate, 293T whole cell lysate, HepG2 whole cell lysate, U937 whole cell lysate  
 All lanes: DBF4 antibody at 1:2000  
 Secondary  
 Goat polyclonal to rabbit IgG at 1/50000 dilution  
 Predicted band size: 77, 27 kDa  
 Observed band size: 72-95 kDa



Immunofluorescence staining of A549 cell with CSB-RA155202A0HU at 1:50, counter-stained with DAPI. The cells were fixed in 4% formaldehyde and blocked in 10% normal Goat Serum. The cells were then incubated with the antibody overnight at 4°C. The secondary antibody was Alexa Fluor 551-conjugated AffiniPure Goat Anti-Rabbit IgG(H+L).

## Usage

For Research Use Only. Not for use in diagnostic or therapeutic procedures.