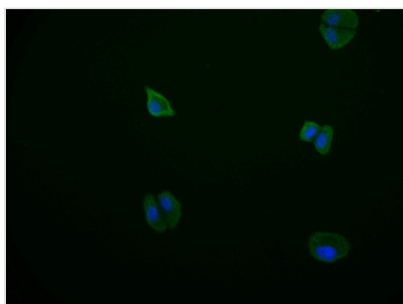




PDE2A Recombinant Monoclonal Antibody

Product Code	CSB-RA150831A0HU
Storage	Upon receipt, store at -20°C or -80°C. Avoid repeated freeze.
Uniprot No.	O00408
Immunogen	A synthesized peptide derived from human PDE2A
Species Reactivity	Human
Tested Applications	ELISA, IF; Recommended dilution: IF:1:50-1:200
Relevance	Cyclic nucleotide phosphodiesterase with a dual-specificity for the second messengers cAMP and cGMP, which are key regulators of many important physiological processes. Plays an important role in growth and invasion of malignant melanoma cells (e.g. pseudomyxoma peritonei (PMP) cell line) (PubMed:24705027). {ECO:0000269 PubMed:24705027}.; [Isoform PDE2A2]: Regulates mitochondrial cAMP levels and respiration (By similarity). Involved in the regulation of mitochondria morphology/dynamics and apoptotic cell death via local modulation of cAMP/PKA signaling in the mitochondrion, including the monitoring of local cAMP levels at the outer mitochondrial membrane and of PKA-dependent phosphorylation of DNM1L (PubMed:28463107). {ECO:0000250 UniProtKB:Q922S4, ECO:0000269 PubMed:28463107}.
Form	Liquid
Conjugate	Non-conjugated
Storage Buffer	Rabbit IgG in 10mM phosphate buffered saline , pH 7.4, 150mM sodium chloride, 0.05% BSA, 0.02% sodium azide and 50% glycerol.
Purification Method	Affinity-chromatography
Isotype	Rabbit IgG
Clonality	Monoclonal
Product Type	Recombinant Antibody
Immunogen Species	Homo sapiens (Human)
Research Area	Signal transduction
Target Names	PDE2A
Clone No.	11C6

Image



Immunofluorescence staining of HepG2 cell with CSB-RA150831A0HU at 1:50, counter-stained with DAPI. The cells were fixed in 4% formaldehyde and blocked in 10% normal Goat Serum. The cells were then incubated with the antibody overnight at 4°C. The secondary antibody was Alexa Fluor 569-conjugated AffiniPure Goat Anti-Rabbit IgG(H+L).



Usage

For Research Use Only. Not for use in diagnostic or therapeutic procedures.