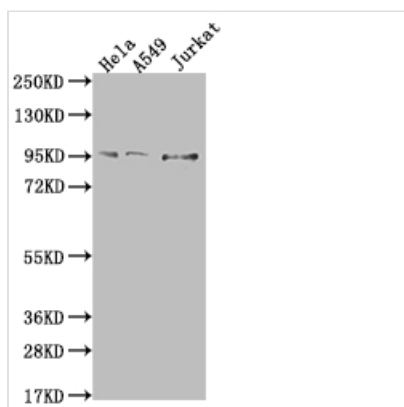




# CARS Recombinant Monoclonal Antibody

<b>Product Code</b>	CSB-RA158403A0HU
<b>Storage</b>	Upon receipt, store at -20°C or -80°C. Avoid repeated freeze.
<b>Uniprot No.</b>	P49589
<b>Immunogen</b>	A synthesized peptide derived from human CARS
<b>Species Reactivity</b>	Human
<b>Tested Applications</b>	ELISA, WB; Recommended dilution: WB:1:500-1:2000
<b>Relevance</b>	Catalyzes the ATP-dependent ligation of cysteine to tRNA(Cys). {ECO:0000269 PubMed:30824121}.
<b>Form</b>	Liquid
<b>Conjugate</b>	Non-conjugated
<b>Storage Buffer</b>	Rabbit IgG in 10mM phosphate buffered saline , pH 7.4, 150mM sodium chloride, 0.05% BSA, 0.02% sodium azide and 50% glycerol.
<b>Purification Method</b>	Affinity-chromatography
<b>Isotype</b>	Rabbit IgG
<b>Clonality</b>	Monoclonal
<b>Product Type</b>	Recombinant Antibody
<b>Immunogen Species</b>	Homo sapiens (Human)
<b>Research Area</b>	Epigenetics and Nuclear Signaling; Cancer; Metabolism; Signal transduction
<b>Target Names</b>	CARS
<b>Clone No.</b>	8B11

## Image



### Western Blot

Positive WB detected in: HeLa whole cell lysate, A549 whole cell lysate, Jurkat whole cell lysate  
 All lanes: CARS antibody at 1:500  
 Secondary  
 Goat polyclonal to rabbit IgG at 1/50000 dilution  
 Predicted band size: 86, 83, 95 kDa  
 Observed band size: 95 kDa

## Usage

For Research Use Only. Not for use in diagnostic or therapeutic procedures.